




Wendy Wu Tours

# JAPAN

---

SOUTH KOREA | TAIWAN

2020-2021



Our Award-Winning Collection of Escorted Tours & Tailormade Holidays

# WELCOME TO JAPAN!



Come and join us on an extraordinary adventure through this magical region on one of our experience-packed tours. As every traveller is different, we've developed a range of touring styles that will allow you to travel your way. Discover the best option for you here:

## CLASSIC

See the classic sights in the company of expert guides so you can really understand the history and culture of the destination. On our Classic tours we take care of everything, leaving you to sit back and enjoy the experience to the full. The tours are fully inclusive of all meals and a comprehensive touring programme.

## SOLO

Designed exclusively for customers travelling solo, these tours provide a ready-made group of like-minded travellers to enjoy your holiday with. You will be looked after all the way by an expert guide who will involve you in the group activities discovering the sights and enjoying cultural experiences. A room of your own is guaranteed with no supplement to pay.

## GO BEYOND

Venture off the beaten track to explore fascinating destinations away from the tourist trail. You will discover the local culture in depth and see sights rarely witnessed by other travellers. These tours take you away from the comforts of home but will reward you with the experiences of a lifetime.

## TAILORMADE

For the ultimate in bespoke touring, one of our expert consultants will help you in designing a tour to meet your exact requirements. Select your choice of destinations, accommodation, touring and experiences to create the perfect holiday for you.

# CONTENTS

|  |            |   |            |
|--|------------|---|------------|
| <b>YOUR GUIDE TO JAPAN</b>                         |            | <b>4–15</b>   |            |
| The Wendy Wu Tours difference .....                | 4          | Cultural encounters .....                           | 10         |
| Your tour, your way .....                          | 6          | Discover Japan with Wendy Wu Tours .....            | 12         |
| You're in safe hands .....                         | 8          | Japan for all seasons .....                         | 14         |
| Award-winning expertise & Recommended by you ..... | 9          |   |            |
| <b>CLASSIC TOURS</b>                               |            | <b>16–35</b>  |            |
| A Week in Japan .....                              | 8 days 18  | Japan Uncovered .....                               | 17 days 28 |
| Jewels of Japan .....                              | 11 days 20 | Ancient Empires of China & Japan – <b>NEW</b> ..... | 20 days 30 |
| Discover Japan .....                               | 13 days 22 | Scenic South Korea – <b>NEW</b> .....               | 13 days 32 |
| Japan & the Scenic South – <b>NEW</b> .....        | 13 days 24 | Treasures of Taiwan – <b>NEW</b> .....              | 14 days 34 |
| Journey Through Japan – <b>NEW</b> .....           | 14 days 26 |   |            |
| <b>SOLO TOURS</b>                                  |            | <b>36–39</b>  |            |
| Highlights of Japan .....                          | 11 days 38 |   |            |
| <b>GO BEYOND TOURS</b>                             |            | <b>40–45</b>  |            |
| Sapporo & Snow Monkeys .....                       | 12 days 42 | Trails of Japan .....                               | 13 days 44 |
| <b>TAILORMADE JAPAN</b>                            |            | <b>46–49</b>  |            |
| How does it work? .....                            | 47         | Tailormade touring .....                            | 48         |
| <b>EXTENSIONS &amp; STOPOVERS</b>                  |            | <b>50–63</b>  |            |
| Japan extensions .....                             | 52         | Hong Kong stopovers .....                           | 58         |
| China, Seoul & Taipei extensions .....             | 54         | Macao stopovers .....                               | 60         |
| South Korea & Taiwan extensions .....              | 56         | Dubai stopovers .....                               | 62         |
| <b>MORE INFORMATION</b>                            |            | <b>64–71</b>  |            |
| Airlines .....                                     | 64         | Booking your trip .....                             | 68         |
| Your Japan questions answered .....                | 66         | Booking conditions .....                            | 69         |





# THE WENDY WU TOURS DIFFERENCE

## UNRIVALLED EXPERTISE

We are proud to be recognised as the UK's leading specialist operator to Asia, a reputation we've been building since 1998. All our staff have travelled extensively throughout the region and are fountains of knowledge on all things Asia.

## EXCEPTIONAL VALUE

We aim to include as much as possible so you can just sit back and enjoy the experience. Your accommodation, most meals, touring, transport and expert guides – we include it all.

## COMPREHENSIVE RANGE OF TOURS

Whether you're looking for a classic escorted tour experience, luxury journey or something more off-the-beaten-track, we've got a tour or tailor-made holiday for you.

## EXTRAORDINARY EXPERIENCES

We've been blazing trails into Asia for the last 20 years, building our local expertise and finding those rarely visited places and authentic cultural experiences that make your holiday truly special. Look out for the 'Experiences You'll Love' on each of our tour pages.

This 2020–2021 brochure is once again packed with pioneering tours exploring this magical region! Travelling with us, you are safe in the knowledge that over the past 20 years, we've mastered the art of creating a tour that balances the iconic sights with local experiences, to give you the perfect overview of your destination. Throw in the exceptional value of our inclusions, the expertise of our team and the host of fantastic guides we have waiting to show you their homeland, and you've got an extraordinary adventure!

I'm also excited for you to see our brand-new tours for 2020–2021: two Japan tours exploring two exciting new regions of the country, a combined China and Japan tour, a South Korea adventure and a journey through Taiwan.

We can't wait to welcome you on tour soon and show you Japan the Wendy Wu way.



吴吟 Wendy

Wendy Wu – Owner, Wendy Wu Tours

## BEST GUIDES IN THE BUSINESS

Through their local expertise, dedication and passion, our guides will make sure you don't miss a thing.

## FLY FROM YOUR LOCAL AIRPORT

For your convenience, on the majority of our tours you'll be able to fly from a UK airport near you, usually at no extra cost.

## SAFE AND SECURE

We are members of ABTA and our holidays are fully ATOL protected.

## PRIVATE GROUP SPECIALISTS

Got a unique interest you'd like to indulge with a group of fellow hobbyists? No problem, we can plan a host of exciting itineraries that will fulfil your group's wants and needs.





# YOUR TOUR, YOUR WAY

We want every person who travels with us to enjoy each extraordinary second of their Wendy Wu adventure, so we've made it easy to ensure that you are getting a holiday that is perfect for you. As well as Tour Styles (which you'll find on page 2), we also give each tour a physical rating, choose accommodation that fits the tour and allow you to tailor your trip...

## TOUR PACE

We're not going to deny it, on many of our tours you're going to be busy! But we want to make sure you don't miss a single thing. Packing your holiday full of extraordinary experiences means some early starts and late finishes, but you can be sure that you'll return home with some incredible memories!

## ACCOMMODATION STYLES

You can be safe in the knowledge that your accommodation has been hand-picked to best suit the locations you'll visit. Our Classic tours feature comfortable, locally rated 3 star to 4 star properties, ranging from smart business hotels to family-run guesthouses. On Go Beyond tours, you may find yourself in more unusual, characterful or more rustic accommodation which fits perfectly with these tours' adventurous spirit.

## CUSTOMISE YOUR TRIP

Interested in exploring your destination further, stopping off en route or adding on some relaxation time? All you have to do is ask! We have a fantastic range of extension and stopover packages (see page 50) or, if you're looking for something a bit different, our knowledgeable team of experts can help you create your very own add-on to any tour in this brochure!



## PHYSICAL RATING



### LEVEL 1

A reasonable level of fitness is required but it's more about spending time on your feet rather than covering large distances. You'll be getting on and off coaches and boats, walking around the sights and climbing some steps.

A Level 2 tour will involve a little more time on your feet than a Level 1 tour and may involve more steps and/or walking.



### LEVEL 3

A good level of fitness is required as you need to be comfortable walking for 2-3 hours and covering longer distances. Other activities such as cycling will be at a gentle pace and will involve straightforward terrain.

A Level 4 tour will feature similar physical activities but these may be longer in duration or on slightly more challenging terrain.



### LEVEL 5

You'll need to be fit and adventurous to participate in these tours as on some days you will be active for most of the day. The terrain may be more challenging and the activities more physically demanding.

All our tours feature a physical rating to help you select the right holiday for you. Every one of our tours require the ability to walk around sights unaided, whilst more active tours involve longer walks, cycling and other physical activities. Tours at altitude will have a higher physical rating. For more information on why each tour has been rated the way it has, have a look at the 'Detailed Tour Dossier' available to download on the tour page of our website.

# You're in safe hands

Our guides are the stars of the show; it is their unrivalled knowledge, passion and expertise that will transform your tour experience from good to truly extraordinary!



"The first thing to say is that our Japan tour ranks among the best we have ever been on, particular praise must however go to our tour guide, the best guide we have ever had the pleasure of leading a tour group. She was an absolute mine of information about all things Japanese, worked tirelessly to ensure that everything ran smoothly and had a great sense of humour that made every day an enjoyable experience. She should be declared a Japanese National Treasure!!"

*Mr and Mrs Gilchrist*

## AWARD-WINNING GUIDING

On all of our group tours you will be accompanied by a dedicated guide, known as your 'National Escort'. Their dedication, personality and sense of fun will immediately put you at ease and make you feel part of the family.

You will be able to put your utmost trust in your guide who will navigate you through the eccentricities of the local way of life.

## ALL OF OUR NATIONAL ESCORTS...

- ✔ Have at least five years guiding experience
- ✔ Are fluent in English
- ✔ Are born and raised in Japan
- ✔ Go through rigorous and ongoing training programmes
- ✔ Are at your service 24 hours a day





# Award-winning expertise

We are so proud of the numerous awards we've received over the years in recognition of the extraordinary travel experience we provide to our customers. We're just doing what we do best – creating memories to cherish and providing exceptional levels of customer service.



# Recommended by you

Awards are all well and good, but it's our customer feedback that means the most to us. We're proud of our 5-star Trip Advisor rating and the fact that so many of our customers would be happy to recommend us to their friends and family – that's all the accolade we need.



98% of customers would be happy to recommend us to their friends and family!



# Cultural encounters, every step of the way

To make sure you truly immerse yourself in your chosen destination we pack every single one of our tours with authentic cultural experiences. We've highlighted our favourite ones on each tour page in the 'Experiences You'll Love' box; but for now, here are just a few examples of what you can look forward to...

## TEA CEREMONY

A perfect display of Japanese culture, witness the preparation and performance involved in the 'Way of Tea'. Enjoy this experience on almost all Japan tours.



## SOBA NOODLE MAKING

One of the many, many types of Japanese noodles, learn to craft, roll and slice soba noodle dough before cooking and devouring the delicious results! Enjoy this experience on Jewels of Japan.



## SUMO WRESTLING

Witness a sport that preserves many of Japan's most ancient traditions – the rituals involved are as fascinating as the wrestling itself. Enjoy this experience on Japan Uncovered and Trails of Japan.

## MOUNT FUJI BASE HIKE

The iconic image of Japan, get up close to the magnificent Mount Fuji with a hike through the beautiful nature at its base. Enjoy this experience on Trails of Japan.



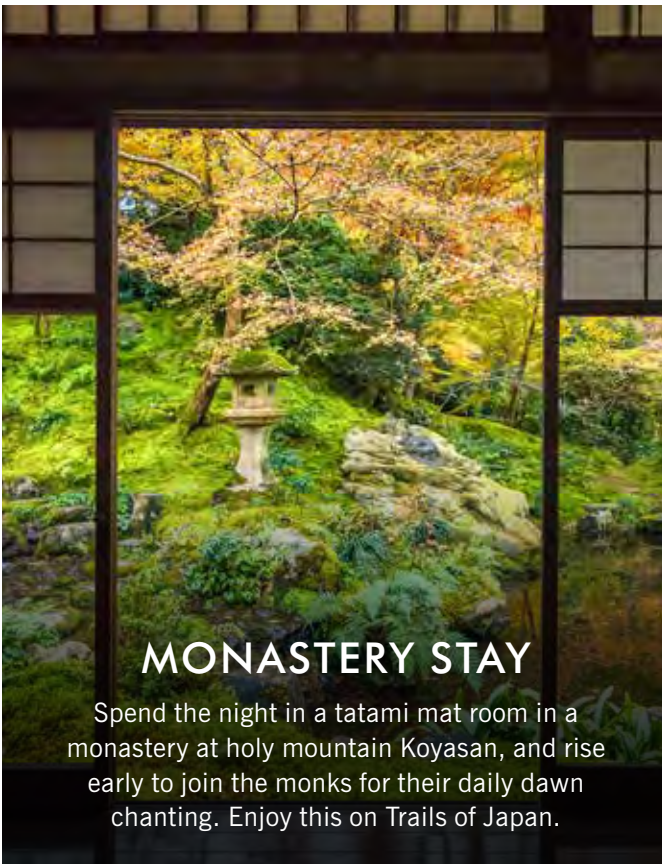
## WASHI PAPER MAKING

Learn about this traditional process before getting your hands dirty making 'washi' (Japanese paper) the age-old way for yourself! Enjoy this experience on Discover Japan and Japan Uncovered.



## MONASTERY STAY

Spend the night in a tatami mat room in a monastery at holy mountain Koyasan, and rise early to join the monks for their daily dawn chanting. Enjoy this on Trails of Japan.



## ZEN MEDITATION

Begin your journey towards inner peace learning the basics of Zen meditation in one of Kyoto's beautiful old temples. Enjoy this experience on Highlights of Japan.





CHINA

HOKKAIDO

SAPPORO

BEIJING

JAPAN

SOUTH KOREA

SEOUL

HONSHU

GYEONGJU

YUDANAKA  
MATSUMOTO  
TAKAYAMA

7

BUSAN

1 6

TOKYO

HIROSHIMA

HIMEJI

3

NAGOYA

MT FUJI

FUKUOKA

OSAKA

KYOTO

NARA

4

SHANGHAI

SHIKOKU

5

KOYASAN

KYUSHU

TAIWAN

TAIPEI

TAINAN

# Discover Japan with Wendy Wu Tours

Japan is an archipelago packed with futuristic cities, imperial heritage and unique culture. Add in epic natural beauty and phenomenal cuisine, and you have a dream destination just begging to be explored.

## WENDY'S TOP 8 JAPAN SIGHTS

### 1 MOUNT FUJI

With its perfectly proportioned cone, Mount Fuji is Japan's iconic sight so we include it on all of our Japan tours.



### 2 HIROSHIMA

The city of Hiroshima is a modern, vibrant place, despite the horrors of its past. Visit the moving Peace Memorial Park to reflect on past events on several of our Japan tours.



### 3 KYOTO

Kyoto is Japan's ancient capital and cultural hub, packed with enchanting sights, 17 of which are UNESCO World Heritage-listed. Kyoto features on all our Japan itineraries.



### 4 NARA

A city famous for its bowing deer and being the birthplace of Japanese culture, how could we leave that off the list? Visit Nara on several of our Japan tours.



### 5 KOYASAN

A holy mountain dotted with monasteries, the wonderfully atmospheric and tranquil Koyasan features on our Highlights of Japan, Discover Japan and Trails of Japan tours.



### 6 TOKYO

A big, bright and brash city, Japan's capital perfectly epitomises the clash of modern and traditional that is the Japan of today. Tokyo, of course, features on all Japan tours.



### 7 SNOW MONKEYS

The Japanese macaques are a delight to watch as they bathe in natural hot pools close to the alpine town of Yudanaka. Meet them on our Japan Uncovered, Sapporo & Snow Monkeys and Trails of Japan tours.



### 8 HIMEJI CASTLE

The best example of Japanese feudal castle architecture, Himeji Castle is seriously impressive. See it for yourself on most of our Japan tours.



# Japan for all seasons

Japan is a country that can be enjoyed year round; here is our guide to what is happening when, to help you decide what time of year you'd like to experience it.



## CHERRY BLOSSOM SEASON

For centuries the cherry blossoms have been an inspiration for poetry writing and painting pictures amongst the Japanese, they even have a dedicated word for going out to fields and parks to appreciate it – ‘hanami’ which literally translates as ‘looking at flowers’. When you gaze on the sea of soft pink flowers it’s easy to see why both they and many international visitors are so enamoured. Starting in late January in the sub-tropical south, the blossoms sweep up the country, reaching Tokyo and Kyoto in the first two weeks of April, though this can vary due to the weather. In the two weeks after they first bloom, locals and visitors alike stroll, sit and picnic beneath the laden boughs, but we particularly like to enjoy them lit up by lanterns at twilight. Cherry blossom season is extremely popular and our tours often sell out a long way in advance. If you want to travel during this period, make sure you book early!



## AUTUMN LEAVES

Japan's deep and rich autumn colours travel the opposite way to the cherry blossom, starting in the very north in September and moving southwards, reaching their peak in Tokyo, Kyoto and the surrounding areas from mid-October. In the parks and temple gardens of the cities, the leaves of the multitude of maple and ginkgo trees turn vibrant shades of red, yellow and orange; if you are travelling into the Japanese Alps, you're in for an even more spectacular sight.



## SUN AND SNOW

Japan's summer, June to August, may be hot and humid but it is the season for festivals and fireworks. Enjoy impromptu celebrations or escape to the mountains to find the cooler climes and maybe do some hiking – this is also the only time of year that you are able to climb Mount Fuji.

In the winter, outside the cities, the country becomes a snow-covered wonderland. Vibrant ski resorts spring into action, ice festivals take place (Sapporo's is the world's biggest) and the Japanese macaques earn their snow monkey moniker. Oh, and there is nothing better than the glorious warm waters of an onsen on a cold winter's day!







# CLASSIC TOURS

For those looking for a fully escorted, fully-inclusive group journey

Meticulously designed journeys perfect for those who want to see iconic sights and magnificent treasures on a fully-inclusive tour that is also fantastic value! With all your arrangements taken care of you can travel with the utmost ease and confidence, travelling with a group of up to 28 fellow travellers and accompanied throughout by one of our fantastic national escorts.

## WHAT'S INCLUDED:

- International airfares
- 3 star plus – 4 star accommodation
- All meals
- All transportation in destination
- All entrance fees, guides and daily tours

## EVERYTHING TAKEN CARE OF

With a Classic tour all your arrangements are taken care of – your flights, all accommodation, transfers, touring, meals and, if you need them, your visas too! All you have to do is show up, explore and enjoy.

## ALL YOUR MEALS ARE INCLUDED

Whilst breakfasts tend to be a mixture of local eats and familiar dishes from home, when it comes to lunch and dinner, you'll be dining in local establishments. We include a few 'feature meals', so you get to taste the signature dishes of the region, whilst the rest of the time you'll eat a whole, delicious range of your destination's best food.

## NATIONAL ESCORTS

You can be safe in the knowledge that throughout your tour you'll be in the company of one of our award-winning national escorts. With their unparalleled knowledge, charisma and talent, these wonderful people are what can push your holiday from fantastic into the realms of truly unforgettable.

## AUTHENTIC EXPERIENCES

Thanks to the extensive expertise of our team, we can make sure you get to see those rarely visited places that will give you a more authentic experience of the culture of the region and the chance to meet the friendly local people. Keep an eye out for the 'Experiences You'll Love' box on every tour page, for a taste of cultural encounters that you will enjoy.

# A WEEK IN JAPAN

8 DAYS FROM

PER PERSON £3,990

FLIGHT INCLUSIVE FROM THE UK

ALL MEALS

## TOUR TICKLIST

- ✓ Stroll through vibrant Tokyo
- ✓ Admire beautiful Mount Fuji
- ✓ Discover Kyoto's temples
- ✓ Explore historic Nara
- ✓ Experience the super-fast bullet train

## PRICE INCLUDES

- 6 breakfasts, 5 lunches & 6 dinners
- International flights and current taxes
- Domestic transportation
- 3 star plus – 4 star accommodation
- Touring with guides and entrance fees



Explore the ancient art of calligraphy

## ▶ EXPERIENCES YOU'LL LOVE

- ▶ With traditional brushes, ink and paper, try your hand at the beautiful art of calligraphy, an important aspect of Japanese culture since its introduction from China in the 6th century.
- ▶ Experience the perfect display of Japanese culture as you witness the preparation and performance involved in the 'Way of Tea', a traditional tea ceremony.
- ▶ Embark on a relaxed dinner cruise on the waters of Tokyo Bay, enabling you to look back and admire the bright, twinkling lights of the city by night.



Admire majestic Mount Fuji

## ITINERARY

### DAYS 1-2: FLY OVERNIGHT TO TOKYO

Fly overnight to the vibrant, neon-bright metropolis of Tokyo, Japan's capital city. Depending on your time of arrival, the rest of the day is yours to start soaking up the local culture.

### DAY 3: EXPLORE TOKYO

Tokyo is a city that is always moving forward – from the ever-changing skyline to the fashions and trends of the people who call it home. As modern as it may appear, behind the neon façade is a traditional soul that is easy to find amongst the old alleyways, temples and shrines of the Edo era. Today you will experience both sides of the city, ascending the soaring Tokyo Skytree, the world's tallest tower, for panoramic views, before taking a wander through the old district of Asakusa. Stop to soak up the atmosphere at Sensoji, Tokyo's most famous and beloved temple and browse the stalls



Experience the buzzing Tokyo metropolis

of Nakamise shopping street. You will also drive by the Imperial Palace Plaza and take a stroll through Hamarikyu Gardens. This evening, cruise the waters of Tokyo Bay and enjoy dinner from the perfect vantage point to admire the supercharged lights of the city.

### DAY 4: MOUNT FUJI

Travel by road from Tokyo to the iconic Mount Fuji, where you will ascend 2,400 metres up its slopes to the 5th Station (weather permitting) for magnificent views of both Fuji's cone and the surrounding landscapes. Transfer to the spa region of Hakone. Embark on a cruise on the spectacular Lake Ashi, keeping an eye out for the bright red of vermilion torii gates that nestle on the surrounding hills and in the shallows of the lake itself. Next, fly high above the lake on the Komagatake Ropeway to the summit of Mount Komagatake where the views of Mount Fuji will be breathtaking but weather dependent of course!

### DAY 5: BULLET TRAIN TO KYOTO

Transfer to Odawara Station to jump onboard the Hikari bullet train and whizz your way to Kyoto. Capital for a millennium, Kyoto was also the heart of religion, philosophy, art and cuisine, making it a treasure trove of history and culture. It is here that all of the best-known cultural arts were born – the tea ceremony, Kabuki and geisha to name a few. This afternoon, visit the magnificent Fushimi Inari Shrine, the most important of several thousands of shrines dedicated to the god Inari. Follow the pathway through thousands of vermilion torii gates that leads through a complex of shrines spread over a peaceful, forested hillside.



**CLASSIC**  
JAPAN

PHYSICAL RATING

**IS THIS TOUR FOR YOU?**  
Limited for time? Discover Japan's essential highlights on this great-value tour. Explore the historic cities of Kyoto and Nara, be awestruck by the beauty of Mount Fuji and see the bright lights of Tokyo and Osaka.



Sample local cuisine



Discover the majestic Osaka Castle

**DAY 6: EXPLORE KYOTO**

Visit one of Japan's most famous temples, Kinkakuji, also known as the 'Golden Pavilion'. Set amongst classical Japanese zen gardens and on the edge of a reflecting pool, the temple's main hall is covered in gold leaf – a breathtaking sight no matter what season you visit in. Continue to Ryoanji Temple, where you can contemplate Japan's most famous zen garden. Enjoy a taste of authentic Japanese culture, experiencing the elegant ritual of a tea ceremony and learn the traditional art of calligraphy.

**DAY 7: EXPLORE NARA & OSAKA**

This morning, depart for Nara. Another former capital, Nara also has a huge cultural legacy, considered second only to Kyoto's. This picturesque, compact city is truly charming. Spend the morning discovering Todaiji Temple which houses the magnificent Daibutsu, a 15-metre-tall bronze statue of Buddha. Here, you will also meet Nara's famous sika deer, believed to be the messengers of the Shinto gods. Stroll around Isuien, a prime example of a Meiji-era (1868-1912) garden. Continue to Osaka, where you will have lunch at a local restaurant and explore the Dotonbori district. Later, you can learn about the turbulent history of the magnificent Osaka Castle.

**DAY 8: FLY OSAKA TO UK**

Fly to the UK, arriving home the same or following day.

**NOT LOOKING TO JOIN A GROUP?**  
Call us to arrange a private tour.



Nara's Daibutsu Buddha



**EXTEND YOUR STAY...**



**HIROSHIMA & MIYAJIMA EXTENSION**  
3 days from £950pp

**HONG KONG GLIMPSES STOPOVER**  
3 days from £290pp

**ESSENTIAL DUBAI STOPOVER**  
3 days from £190pp

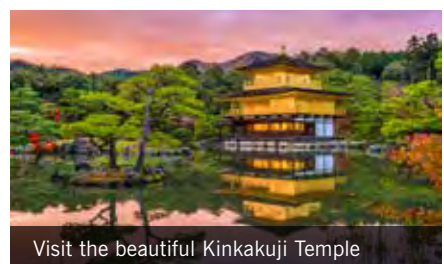
Visit page 50 to learn more about all of our extensions and stopovers.

**PRICES & DEPARTURES**

| 2020 DATES      |        |                 |        |
|-----------------|--------|-----------------|--------|
| 24 Mar - 31 Mar | £4,190 | 05 May - 12 May | £3,990 |
| 28 Mar - 04 Apr | £4,290 | 16 May - 23 May | £3,990 |
| 31 Mar - 07 Apr | £4,290 | 12 Sep - 19 Sep | £4,090 |
| 02 Apr - 09 Apr | £4,290 | 26 Sep - 03 Oct | £4,090 |
| 05 Apr - 12 Apr | £4,190 | 11 Oct - 18 Oct | £3,990 |
| 20 Apr - 27 Apr | £3,990 | 19 Oct - 26 Oct | £3,990 |
| 2021 DATES      |        |                 |        |
| 23 Mar - 30 Mar | £4,390 | 04 May - 11 May | £4,190 |
| 27 Mar - 03 Apr | £4,490 | 15 May - 22 May | £4,190 |
| 30 Mar - 06 Apr | £4,490 | 11 Sep - 18 Sep | £4,290 |
| 01 Apr - 08 Apr | £4,490 | 25 Sep - 02 Oct | £4,290 |
| 11 Apr - 18 Apr | £4,390 | 10 Oct - 17 Oct | £4,190 |
| 19 Apr - 26 Apr | £4,290 | 21 Oct - 28 Oct | £4,190 |

**Flight and supplement information**

- Based on London Heathrow departures
- Regional UK departures available
- Flight upgrades available on request
- Land only from £3,290 (Tokyo - Osaka)
- Single room from £790



Visit the beautiful Kinkakuji Temple

# JEWELS OF JAPAN

11 DAYS FROM

PER PERSON £4,990

FLIGHT INCLUSIVE FROM THE UK

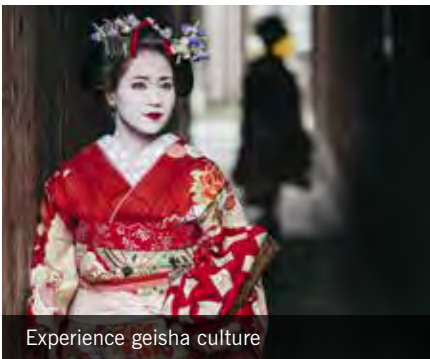
ALL MEALS

## TOUR TICKLIST

- ✓ Feel the rush of Tokyo
- ✓ Admire beautiful Mount Fuji
- ✓ Puzzle over Ryoanji
- ✓ Be charmed by Kyoto
- ✓ Reflect in Hiroshima
- ✓ Explore relaxed Miyajima

## PRICE INCLUDES

- 9 breakfasts, 8 lunches & 9 dinners
- International flights and current taxes
- Domestic transportation
- 3 star plus – 4 star accommodation
- Touring with guides and entrance fees



Experience geisha culture

## ▶ EXPERIENCES YOU'LL LOVE

- ▶ The most iconic symbol of Japanese culture, no trip to Japan is complete without at least a glimpse of a geisha. On this tour you'll meet a geisha in Kyoto and learn about their fascinating culture.
- ▶ The buckwheat soba noodle is one of Japan's most famous culinary exports - try your hand at making them from scratch, before feasting on the delicious results for lunch.
- ▶ Take part in a handicraft experience - the traditions and techniques of the intricate art of origami. You'll learn to fold some of the simpler, but still impressive, shapes and designs.



Sail to the holy island of Miyajima

## ITINERARY

### DAYS 1-2: FLY OVERNIGHT TO TOKYO

Fly overnight to the dazzling metropolis of Tokyo, Japan's capital city. Depending on your time of arrival, the rest of the day is yours to start soaking up the local culture.

### DAY 3: DISCOVER TOKYO

Begin today with a stroll through the Imperial Palace East Garden and then take time to explore the Edo-Tokyo Museum to learn about Tokyo's historical heritage. After lunch, seek out the tranquillity at Sensoji Temple in Asakusa district, followed by a visit to the observation deck of the 634-metre Skytree for panoramic views over the sprawling city below.

### DAY 4: MEIJI SHRINE

Start the day with a relaxing wander around the classical landscapes of the Hamarikyu Garden. Continue to the Meiji Shrine, a Shinto shrine dedicated to the deified spirits of Emperor Meiji and his wife, Empress Shoken, before driving past the famous Shibuya Crossing. Enjoy the afternoon at leisure to explore as you wish. End the day with a dinner cruise on Tokyo Bay and witness the city lit up at night.

### DAY 5: MOUNT FUJI & FUJI FIVE LAKES

Journey through the foothills of the iconic Mount Fuji to its base where we find the Fuji Five Lakes. The region is spectacularly dotted by the calm waters of five lakes, formed by past volcanic eruptions, reflecting Mount Fuji's picture-perfect cone. Upon arrival, ascend 2,000 metres up to Mount Fuji's 5th Station (weather permitting) where, with its perfectly conical peak looming overhead, you can take

in the breathtaking views over the landscapes below. After lunch, continue to Itchiku Kubota Art Museum to view the artist's elaborate dyed silk creations and spend some time strolling around the beautiful garden. Also explore Iyashi no Sato Historical Village, a former farming village on the shores of Lake Saiko. Destroyed by a landslide in 1966, the remaining thatch-roofed houses of this old village have been transformed into an open-air museum and craft village.

### DAY 6: BULLET TRAIN TO KYOTO

Start the day with a visit to Oshino Hakkai before learning how to make your very own traditional Japanese soba noodles which you will then tuck into for lunch! Later, transfer to Mishima station and journey on the bullet train to Kyoto. An enchanting city, Kyoto was capital for 1,000 years; today it is the legacy of ancient Japan, full of tranquil temples, silk-clad geisha and sublime gardens.

### DAY 7: EXPLORE KYOTO

Enjoy a full day tour of Kyoto starting with a visit to one of Kyoto's delightful temples - the 17th-century Buddhist Kiyomizu. Immerse yourself in the culture by experiencing the ritual of the sacred tea ceremony and try your hand at the art of origami. Also meet with either a maiko (apprentice geisha) or geisha and learn about their way of life and culture before exploring the impressive Fushimi Inari Shrine with its remarkable 10,000 red torii gates.



**CLASSIC**  
JAPAN

PHYSICAL RATING

**IS THIS TOUR FOR YOU?**  
See the classic sights of Japan, visiting modern Tokyo, iconic Mount Fuji and historic Kyoto. A visit to Hiroshima's Peace Memorial Park and Museum and the holy island of Miyajima complete this fascinating tour.



**PRICES & DEPARTURES**

| 2020 DATES      |        |                 |        |
|-----------------|--------|-----------------|--------|
| 17 Mar - 27 Mar | £5,190 | 06 May - 16 May | £4,990 |
| 20 Mar - 30 Mar | £5,290 | 13 May - 23 May | £4,990 |
| 23 Mar - 02 Apr | £5,390 | 17 May - 27 May | £4,990 |
| 26 Mar - 05 Apr | £5,490 | 20 May - 30 May | £4,990 |
| 29 Mar - 08 Apr | £5,490 | 10 Sep - 20 Sep | £5,290 |
| 30 Mar - 09 Apr | £5,490 | 20 Sep - 30 Sep | £5,290 |
| 31 Mar - 10 Apr | £5,490 | 23 Sep - 03 Oct | £5,290 |
| 01 Apr - 11 Apr | £5,490 | 28 Sep - 08 Oct | £5,290 |
| 02 Apr - 12 Apr | £5,490 | 06 Oct - 16 Oct | £5,290 |
| 03 Apr - 13 Apr | £5,390 | 12 Oct - 22 Oct | £5,290 |
| 04 Apr - 14 Apr | £5,390 | 17 Oct - 27 Oct | £5,190 |
| 07 Apr - 17 Apr | £5,390 | 23 Oct - 02 Nov | £5,190 |
| 13 Apr - 23 Apr | £5,290 | 02 Nov - 12 Nov | £4,990 |
| 17 Apr - 27 Apr | £5,190 | 09 Nov - 19 Nov | £4,990 |
| 22 Apr - 02 May | £5,190 |                 |        |

**DAY 8: JOURNEY TO HIROSHIMA**  
Begin the day with a visit to Ryoanji Temple, home to Japan's most famous zen garden and the famous Kinkakuji Temple, known as the 'Golden Pavilion'. Continue to Osaka, arriving in time for lunch in the vibrant Dotonbori district. Later, travel by bullet train to Hiroshima. A city that needs no introduction, Hiroshima today is vibrant and modern with a forward thinking, sunny outlook.

NOT LOOKING TO JOIN A GROUP?  
Call us to arrange a private tour.



**SEE SHIBAZAKURA FESTIVAL**

During the month of May, a special visit to the Fuji Shibazakura Festival has been included on day 5. This is the best time of the year and one of the most scenic places in Japan to see the pink moss phlox in full bloom! Contact us for more information.

**DAY 9: HIROSHIMA & MIYAJIMA**  
Hop on the ferry to the holy island of Miyajima and visit the Itsukushima Shrine, a UNESCO World Heritage Site and one of Japan's most recognisable, rising majestically out of the waters of the Seto Inland Sea. Enjoy some free time and take an optional ride on the cable car up Mount Misen to enjoy the panoramic views. Return to Hiroshima and take a moment to reflect at the Peace Memorial Park and Museum, paying homage to the victims of the 1945 atomic bomb and also visit the Orizuro Tower.

**EXTEND YOUR STAY...**



- NARA EXTENSION**  
2 days from £390pp
- HONG KONG GLIMPSES STOPOVER**  
3 days from £290pp
- ESSENTIAL DUBAI STOPOVER**  
3 days from £190pp

**DAY 10: HIMEJI CASTLE**  
Travel to Himeji to visit its famous castle. The feudal era fort, one of the most impressive in Japan, towers over the city and is recognisable as the backdrop to several major films. Appreciate its turbulent past before strolling around Kokoan, the Edo-style gardens just across the castle moat. Later, transfer to Osaka for an overnight stay.

**DAY 11: FLY OSAKA TO UK**  
Fly to the UK, arriving home the same or following day.

Visit page 50 to learn more about all of our extensions and stopovers.

| 2021 DATES      |        |                 |        |
|-----------------|--------|-----------------|--------|
| 17 Mar - 27 Mar | £5,490 | 05 May - 15 May | £5,290 |
| 22 Mar - 01 Apr | £5,690 | 12 May - 22 May | £5,290 |
| 25 Mar - 04 Apr | £5,790 | 16 May - 26 May | £5,290 |
| 28 Mar - 07 Apr | £5,790 | 19 May - 29 May | £5,290 |
| 29 Mar - 08 Apr | £5,790 | 09 Sep - 19 Sep | £5,490 |
| 30 Mar - 09 Apr | £5,790 | 19 Sep - 29 Sep | £5,490 |
| 31 Mar - 10 Apr | £5,790 | 22 Sep - 02 Oct | £5,490 |
| 01 Apr - 11 Apr | £5,790 | 27 Sep - 07 Oct | £5,490 |
| 02 Apr - 12 Apr | £5,790 | 04 Oct - 14 Oct | £5,390 |
| 03 Apr - 13 Apr | £5,790 | 11 Oct - 21 Oct | £5,390 |
| 06 Apr - 16 Apr | £5,690 | 18 Oct - 28 Oct | £5,390 |
| 12 Apr - 22 Apr | £5,590 | 25 Oct - 04 Nov | £5,390 |
| 16 Apr - 26 Apr | £5,490 | 01 Nov - 11 Nov | £5,290 |
| 21 Apr - 01 May | £5,490 | 08 Nov - 18 Nov | £5,290 |

**Flight and supplement information**

- Based on London Heathrow departures
- Regional UK departures available
- Flight upgrades available on request
- Land only from £4,290 (Tokyo - Osaka)
- Single room from £990



See Hiroshima Peace Memorial

# DISCOVER JAPAN

13 DAYS FROM

PER PERSON £5,490

FLIGHT INCLUSIVE FROM THE UK

ALL MEALS

## TOUR TICKLIST

- ✓ Feel the rush of Tokyo
- ✓ Admire great Mount Fuji
- ✓ Be charmed by Kyoto
- ✓ Visit Buddhist Koyasan
- ✓ See ancient Nara
- ✓ Explore the Japanese Alps



Explore the rural UNESCO-listed Shirakawago

## PRICE INCLUDES

- 11 breakfasts, 10 lunches & 11 dinners
- International flights and current taxes
- Domestic transportation
- 3 star plus – 4 star accommodation
- Touring with guides and entrance fees



Learn about miso seasoning

## ▶ EXPERIENCES YOU'LL LOVE

- ▶ Learn all about the traditional production of an essential element of Japanese cooking, the fermented soybean paste 'miso', at an old wooden miso house.
- ▶ Join a dedicated craftsman in a small workshop to learn all about the lovely and intricate art of gold leaf making, discover what the gold leaf is then used for and have a go at doing it yourself!
- ▶ Discover the traditional process of paper making before getting your hands dirty making 'washi' (Japanese paper) the age-old way.

## ITINERARY

### DAYS 1-2: FLY OVERNIGHT TO TOKYO

Fly overnight to the dazzling metropolis of Tokyo, Japan's capital city. Depending on your time of arrival, the rest of the day is yours to start soaking up the local culture.

### DAY 3: TOKYO CITY TOUR

Tokyo is the ultimate 24-hour city, but look behind its frantic, high-tech frontage and you will find plenty of tranquil backstreets and old temples to explore. Begin at the observation deck of the 634-metre Skytree, the world's tallest tower, before wandering through the old district of Asakusa. Stop to seek out the tranquillity of the ancient Buddhist Sensoji Temple, Tokyo's oldest. Discover Tokyo's historical heritage with a drive past the Imperial Palace Plaza. Later, stroll through the classical landscapes of Hamarikyū Gardens. This evening, take a relaxed dinner cruise on Tokyo Bay for some excellent city vistas.

### DAY 4: MOUNT FUJI

Take the super-fast bullet train to Odawara. Enjoy a boat trip on Lake Ashi for spectacular panoramas of this beautiful area before venturing up the Komagatake Ropeway. Next, ascend over 2,000 metres up Mount Fuji to the 5th Station, (weather permitting) and take in the breathtaking views over the Fuji Five Lakes area below.

### DAY 5: MATSUMOTO CASTLE

Transfer to Matsumoto and explore the formidable 16th-century Matsumoto Castle. Stop at a Miso House to learn about the process of making this famous Japanese seasoning. Travel on to Takayama, nestled high in the mountainous Hida region, also known as the Japanese Alps.

### DAY 6: EXPLORE TAKAYAMA

Browse the local handicrafts and fresh produce at the Miyagawa morning market and wander past some of the lovely traditional houses. You'll also visit several of the excellent local museums – including the Festival Floats Museum, Kusakabe Folk Crafts Museum and Takayama Jinya. Also enjoy some free time in Kamisannomachi Street.

### DAY 7: SHIRAKAWAGO & KANAZAWA

Get a glimpse of rural Japan at the UNESCO World Heritage-listed Shirakawago which is famous for its farmhouses built in the unique gassho-zukuri architectural style. Continue to Gokayama to have a go at washi paper making, then travel to Kanazawa and meander through the beautiful Kenrokuen Garden, one of the Three Great Gardens of Japan.

### DAY 8: GOLD LEAF MAKING

Begin the day learning the process of making gold leaf. Next, stroll through traditional Higashi Chaya (Eastern Teahouse District), visiting Ochaya Shima – a historical geisha house. Later, journey to Kyoto. Capital for 1,000 years, until 1879, today Kyoto is the legacy of ancient Japan, full of tranquil temples, silk-clad geisha and sublime gardens.

### DAY 9: EXPLORE KYOTO

Start the day with a visit to Ryoanji, the 'temple of the peaceful dragon' and the famous Kinkakuji, also known as the 'Golden Pavilion'. In the afternoon, head to a restored Japanese wooden townhouse and try your hand at origami and enjoy the age-old rituals of a tea ceremony.



**CLASSIC**  
JAPAN

PHYSICAL RATING

**IS THIS TOUR FOR YOU?**  
See the classic sights of Japan including Tokyo, Mount Fuji and the historic capitals of Kyoto and Nara. Also travel across the Japanese Alps to the cultural centres of Takayama, Shirakawago and Kanazawa.



**PRICES & DEPARTURES**

| 2020 DATES      |        |                 |        |
|-----------------|--------|-----------------|--------|
| 19 Mar - 31 Mar | £5,690 | 05 May - 17 May | £5,490 |
| 22 Mar - 03 Apr | £5,890 | 12 May - 24 May | £5,490 |
| 24 Mar - 05 Apr | £5,990 | 16 May - 28 May | £5,490 |
| 27 Mar - 08 Apr | £5,990 | 19 May - 31 May | £5,490 |
| 29 Mar - 10 Apr | £5,990 | 20 Sep - 02 Oct | £5,790 |
| 30 Mar - 11 Apr | £5,990 | 25 Sep - 07 Oct | £5,790 |
| 31 Mar - 12 Apr | £5,990 | 29 Sep - 11 Oct | £5,790 |
| 02 Apr - 14 Apr | £5,890 | 07 Oct - 19 Oct | £5,690 |
| 03 Apr - 15 Apr | £5,890 | 17 Oct - 29 Oct | £5,690 |
| 04 Apr - 16 Apr | £5,890 | 27 Oct - 08 Nov | £5,590 |
| 06 Apr - 18 Apr | £5,790 | 03 Nov - 15 Nov | £5,490 |
| 15 Apr - 27 Apr | £5,690 | 10 Nov - 22 Nov | £5,490 |
| 21 Apr - 03 May | £5,590 |                 |        |
| 2021 DATES      |        |                 |        |
| 18 Mar - 30 Mar | £5,990 | 04 May - 16 May | £5,690 |
| 21 Mar - 02 Apr | £6,090 | 11 May - 23 May | £5,690 |
| 23 Mar - 04 Apr | £6,190 | 15 May - 27 May | £5,690 |
| 26 Mar - 07 Apr | £6,190 | 18 May - 30 May | £5,690 |
| 28 Mar - 09 Apr | £6,190 | 07 Sep - 19 Sep | £5,990 |
| 29 Mar - 10 Apr | £6,190 | 14 Sep - 26 Sep | £5,990 |
| 30 Mar - 11 Apr | £6,190 | 21 Sep - 03 Oct | £5,990 |
| 01 Apr - 13 Apr | £6,190 | 08 Oct - 20 Oct | £5,890 |
| 02 Apr - 14 Apr | £6,090 | 16 Oct - 28 Oct | £5,890 |
| 03 Apr - 15 Apr | £6,090 | 24 Oct - 05 Nov | £5,790 |
| 05 Apr - 17 Apr | £6,090 | 02 Nov - 14 Nov | £5,690 |
| 14 Apr - 26 Apr | £5,990 | 09 Nov - 21 Nov | £5,690 |
| 20 Apr - 02 May | £5,890 |                 |        |

**Flight and supplement information**

- Based on London Heathrow departures
- Regional UK departures available
- Flight upgrades available on request
- Land only from £4,790 (Tokyo - Osaka)
- Single room from £1,190

**DAY 10: DISCOVER NARA**

Visit Fushimi Inari Shrine, remarkable for its 10,000 vermilion torii gates. Continue to Nara, a relaxed and charming town virtually untouched by the ravages of modernity. Home to many archetypal pieces of early art and architecture, stroll through Nara Park to Todaiji Temple, meeting the resident sika deer en-route, before exploring Isuien Garden.

**DAY 11: KOYASAN**

The holy mountain of Koyasan is home to a cluster of over 100 monasteries nestled in a valley enclosed by peaks said to resemble a lotus flower. Wander around Okunoin – a vast cemetery of 200,000 stupas. Full of atmosphere, enjoy the tranquillity and spectacular views as you discover Kongobuji Temple and the Garan Temple Complex. Later, continue to Osaka.

**DAY 12: EXPLORE OSAKA**

Today, explore Osaka Castle, take a short cruise along the Yodogawa River and stroll through Dotonbori, a restaurant mecca, where you can sample the local delicacies for lunch. The remainder of the day is free for you to explore this fascinating city.

**DAY 13: FLY OSAKA TO UK**

Fly to the UK, arriving home the same or following day.

**NOT LOOKING TO JOIN A GROUP?**

Call us to arrange a private tour.



**EXTEND YOUR STAY...**



- HIROSHIMA & MIYAJIMA EXTENSION**  
3 days from £950pp
- HONG KONG GLIMPSES STOPOVER**  
3 days from £290pp
- ESSENTIAL DUBAI STOPOVER**  
3 days from £190pp

Visit page 50 to learn more about all of our extensions and stopovers.



NEW

# JAPAN & THE SCENIC SOUTH

13 DAYS FROM

PER PERSON £5,790

FLIGHT INCLUSIVE FROM THE UK

ALL MEALS

## TOUR TICKLIST

- ✓ Explore charming Fukuoka
- ✓ Discover Kumamoto
- ✓ See the impressive Mount Aso
- ✓ Reflect in Hiroshima
- ✓ Admire Kyoto's past
- ✓ Gaze at Mount Fuji



Enjoy impressive views of Mount Aso

## PRICE INCLUDES

- 11 breakfasts, 10 lunches & 11 dinners
- International flights and current taxes
- Domestic transportation
- 3 star plus – 4 star accommodation
- Touring with guides and entrance fees



Relax at a Beppu hot spring resort

## ▶ EXPERIENCES YOU'LL LOVE

- ▶ Visit one of Japan's most famous hot spring resorts, Beppu, and soak away any aches, pains and tiredness in the mineral rich waters of your hotel's onsen pools.
- ▶ Cruise the picturesque Yanagawa River on a 'donkobune', a poled riverboat. It's a perfect and peaceful way to enjoy sights such as Yanagawa Castle and the traditional architecture of Yanagawa's canals.
- ▶ Gaze over Mount Aso, Japan's largest volcano and the smaller volcanoes within its huge crater (one of which is active), and admire the incredible scenery that surrounds it.

## ITINERARY

### DAYS 1-2: FLY OVERNIGHT TO FUKUOKA

Fly overnight to the charming city of Fukuoka, the gateway to the island of Kyushu. Depending on your time of arrival, the rest of the day is yours to start soaking up the local culture.

### DAY 3: EXPLORE FUKUOKA

The lovely Fukuoka is at the heart of an area considered a cradle of culture – the city's position facing Korea and China across the sea means it's long been a channel of outside influence. This morning take a stroll to the traditional Rakusuien Garden and visit the famous Dazaifu Tenmangu Shrine, dedicated to the god of academic achievement. Later, take a relaxed cruise on the Yanagawa River, passing through a National Site of Scenic Beauty on a small 'donkobune'.

### DAY 4: DISCOVER KUMAMOTO

Transfer to Kumamoto, a city famous for its majestic castle, one of Japan's largest and most complete. You'll see the castle as part of your full day city tour, as well as Suizenji Garden. A traditional-style garden built in the 17th century, the garden recreates in miniature the important road that linked Edo (Tokyo) and Kyoto, including a mini Mount Fuji.

### DAY 5: VISIT MOUNT ASO & BEPPU

Travel from Kumamoto to Mount Aso, an active volcano at the centre of Kyushu island. Aso's crater is one of the world's largest; with a circumference of over 100km it encompasses a number of other active peaks, which you'll be able to see (weather dependent). Continue to Beppu, one of

Japan's most famous hot spring resorts – your hotel for the night has onsen facilities for you to make the most of the steamy waters.

### DAY 6: EXPLORE BEPPU

Venture out into Beppu, starting the day with a jigoku meguri, a hell tour! Here you'll find all sorts of volcanic features, including thermal mud and hot springs that have bubbled from the ground here for a millennium. Pop over to Yufuin, another hot spring resort that is home to a wealth of art museums, cafes and boutiques and is a delight to explore. This afternoon transfer back to Fukuoka.

### DAY 7: TRAVEL TO HIROSHIMA

Depart Fukuoka for Hiroshima. Stop en route to explore the city of Yamaguchi, spending some time at Rurikoji, a Buddhist temple that boasts a spectacular national treasure – a five-storey pagoda built in 1442. Continue to Iwakuni for a lunch stop and then to the Kintaikyō Bridge, an elegant wooden bridge that crosses the Nishiki River. Arrive in Hiroshima.



Discover Kumamoto Castle



**CLASSIC**  
JAPAN

PHYSICAL RATING



**IS THIS TOUR FOR YOU?**

Uncover the beauty of the lesser-known island of Kyushu, renowned for its active volcanoes, hot springs and stunning beaches, before exploring the must-see sights of Hiroshima, Kyoto and Tokyo on the largest island of Honshu.



**DAY 8: DISCOVER HIROSHIMA**

Hiroshima is a vibrant, forward-thinking city that is a pleasure to explore. Take a ferry across the Seto Inland Sea to the holy island of Miyajima and visit the Itsukushima Shrine before enjoying some time at leisure. Back in the city, reflect on Hiroshima's tragic past at the Peace Memorial Park and Museum paying homage to the victims of the 1945 atomic bomb.

**DAY 9: ADMIRE HIMEJI CASTLE**

Depart Hiroshima for Kyoto, stopping in Himeji en route to visit the magnificent Himeji Castle, one of Japan's most impressive feudal era forts, and stroll through Kokoan, an Edo-style garden just across the castle moat. Drop in on a sake brewery to learn about the process of this traditional Japanese spirit and enjoy some tasters, before arriving in Kyoto.

**DAY 10: EXPLORE KYOTO**

Capital for 1,000 years, until 1879, today Kyoto is the legacy of ancient Japan, full of tranquil temples, silk-clad geisha and sublime gardens. Start the day with a visit to the Fushimi Inari Shrine, remarkable for its 10,000 vermilion torii gate-lined pathways and impressive Nijo Castle. This afternoon gaze on the famous Kinkakuji, also known as the 'Golden Pavilion' before a stroll around the Gion district, Kyoto's famous geisha district and centre of the city's traditional arts.

**DAY 11: VISIT HAKONE**

Transfer to Kyoto station and board a bullet train to Atami to transfer to the onsen resort of Hakone by road. Discover the mountainous beauty and rich culture of the Hakone area, before travelling to Lake Ashi for a cruise

that will allow you to take in the spectacular panoramas of the area, including the iconic, snow-capped silhouette of Mount Fuji (weather permitting). Next, fly high over the thick forest on the Hakone Ropeway, passing the volcanic Owakudani Valley with its hot springs and steam vents. Later, continue to Tokyo, Japan's capital city.

**DAY 12: TOUR TOKYO**

Tokyo is a city that is always moving forward – from the ever-changing skyline to the fashions and trends of the people who call it home. As modern as it may appear, behind the neon façade is a traditional soul that is easy to find amongst the old alleyways, temples and shrines of the Edo era. Today you will experience both sides of the city, ascending the soaring Tokyo Skytree, the world's tallest tower, for panoramic views, and wandering through the old district of Asakusa. Stop at Sensoji, Tokyo's most famous and beloved temple. You will also drive by the Imperial Palace Plaza, soak up the atmosphere at the peaceful Meiji Jingu Shrine and see the world's most famous road crossing at Shibuya.

**DAY 13: FLY TOKYO TO UK**

Fly to the UK, arriving home the same or following day.

**NOT LOOKING TO JOIN A GROUP?**  
Call us to arrange a private tour.

**PRICES & DEPARTURES**

**2020 DATES**

27 Mar - 08 Apr **£5,790** 25 Sep - 07 Oct **£5,790**

**2021 DATES**

26 Mar - 07 Apr **£5,990** 24 Sep - 06 Oct **£5,990**

**Flight and supplement information**

- Based on London Heathrow departures
- Regional UK departures available
- Flight upgrades available on request
- Land only from £5,090 (Fukuoka - Tokyo)
- Single room from £890

**EXTEND YOUR STAY...**



**SEOUL EXTENSION**

4 days from £490pp

**TAIPEI EXTENSION**

4 days from £490pp

**HONG KONG GLIMPSES STOPOVER**

3 days from £290pp

Visit page 50 to learn more about all of our extensions and stopovers.

NEW

# JOURNEY THROUGH JAPAN

14 DAYS FROM

PER PERSON **£6,290**

FLIGHT INCLUSIVE FROM THE UK

ALL MEALS

## TOUR TICKLIST

- ✓ Discover Hokkaido's nature
- ✓ Explore vibrant Sapporo
- ✓ Spend time in Hakodate
- ✓ See Tokyo's bright lights
- ✓ Gaze at Mount Fuji
- ✓ Uncover Kyoto's past



Explore the beautiful surroundings of Nikko National Park

## PRICE INCLUDES

- 12 breakfasts, 11 lunches & 12 dinners
- International flights and current taxes
- Domestic transportation
- 3 star plus – 4 star accommodation
- Touring with guides and entrance fees



Relax in a warm onsen spa

## ▶ EXPERIENCES YOU'LL LOVE

- ▶ Spend the night in a ryokan, a centuries-old style of guesthouse that offers the ultimate Japanese experience! Sleep on futons and tatami mats, dine on traditional food and bathe in the relaxing warm waters of an onsen.
- ▶ Try your hand at the traditional art of handkerchief dyeing in a workshop of a handicraft village – you'll get to create beautiful colours and patterns working with the dyes.
- ▶ Embark on a tour of a sake brewery, where you'll see first hand the traditional process used to brew the rice wine that is Japan's national beverage and have a few cheeky tasters.

## ITINERARY

### DAYS 1-2: FLY OVERNIGHT TO SAPPORO

Fly overnight to the vibrant city of Sapporo, capital of the northern Japanese island of Hokkaido. Depending on your time of arrival, the rest of the day is yours to start soaking up the local culture.

### DAY 3: ASCEND OKURAYAMA

This morning, ascend to the Okurayama viewing point, soaring up to the summit of the Sapporo Winter Olympics ski jump by chair lift – the views over the surrounding mountains are breathtaking. Continue to the pretty port town of Otaru and take some time to walk along the streets of the village and stroll along the picturesque canal. This evening visit the Sapporo Beer Museum where there is an optional beer tasting before popping next door to the Sapporo Beer Garden to dine on a Genghis Khan dinner – barbecue lamb, a Sapporo special!

### DAY 4: TRAVEL TO HAKODATE

Depart Sapporo and travel to a lovely lakeside spot to visit a museum of Ainu culture, an indigenous people of the area. Continue to Noboribetsu Jigokudani (Hell Valley) and walk through a volcanic caldera where you can see steam jets, vents and hot springs. After lunch, hop on a train to the harbour city of Hakodate, set on Hokkaido's southern tip, where you'll embark on a night tour with time to ascend the ropeway up Mount Hakodate, for magnificent views over the illuminated city.

### DAY 5: EXPLORE HAKODATE ASAICHI

Start the day wandering Hakodate's bustling asaichi (morning market), where hundreds of stores and stalls sell fresh local produce,

seafood and the odd souvenir. Ascend Goryokaku Tower for views over Goryokaku Fort and Mount Hakodate before boarding the bullet train to the lovely city of Aomori in the north of Honshu, Japan's largest island. Visit the Nebuta Warasse, a museum dedicated to Aomori's famous, 300-year-old Nebuta Matsuri, a lively summer festival.

### DAY 6: TSUNAGI ONSEN

Depart Aomori for Kakunodate, an old samurai stronghold still known for its samurai traditions. Visit the Aoyagi Samurai Manor Museum for a fascinating look at samurai culture and stroll around Ishiguro House, a traditional samurai residence. Continue to the hot spring resort of Tsunagi, where you can make use of the onsen facilities at the traditional Japanese ryokan where you'll stay overnight.

### DAY 7: CRUISE MATSUSHIMA BAY

Travel to Hiraizumi, where you'll explore the peaceful Chusonji with its beautiful old gold leaf-covered hall. Continue to Matsushima to enjoy a relaxed cruise on Matsushima Bay, passing amongst the small pine tree-covered islands of this picturesque seascape.

### DAY 8: SENDAI TO NIKKO

Walk to Sendai station and take the bullet train to the culture-filled town of Nikko. Start your explorations in the beautiful surroundings of Nikko National Park, where you'll visit Toshogu shrine. Built in the 1600s, this is Japan's most lavish shrine, built as the final resting place of shogun Tokugawa Ieyasu. Continue to the magnificent Kegon Waterfall, taking a 100-metre tall elevator up to the perfect viewing spot. Transfer to Tokyo.



**CLASSIC**  
JAPAN

PHYSICAL RATING

**IS THIS TOUR FOR YOU?**

Along with the must-see sites on the island of Honshu and a day trip to Nikko, this is a tour of varying landscapes as it journeys south from Hokkaido uncovering the charming cities of Sapporo, Otaru and Hakodate.



Admire illuminated views of Hakodate



Stroll along the canal in Otaru

**DAY 9: EXPLORE TOKYO**

Tokyo, Japan's capital, is the ultimate 24-hour city, but look behind its frantic, high-tech frontage and you'll find plenty of tranquil backstreets and old temples to explore. Start the day in the vibrant district of Asakusa, where you will visit Sensoji, Tokyo's oldest temple, and wander down Nakamise shopping street before a visit to Edo Tokyo Museum. After lunch, stroll through the peaceful Meiji Jingu Shrine complex, before ascending to the observatory deck of the Tokyo Metropolitan Government building for exceptional views over the city.

**DAY 10: ADMIRE MOUNT FUJI**

Travel by road from Tokyo to Mount Fuji, where you'll ascend 2,400 metres up Japan's most iconic sight to the 5th Station (weather permitting). Transfer to the Hakone area. Embark on a cruise on the spectacular Lake Ashi before flying high above the lake on the Komagatake Ropeway to the summit of Mount Komagatake where the views of Mount Fuji will be breathtaking, if the peak isn't hiding in cloud of course! Return to Tokyo.

**DAY 11: TRAVEL TO KYOTO**

Take a bullet train to Kyoto. Capital for 1,000 years, the city today is full of the legacy of ancient Japan and home to tranquil temples, silk-clad geisha and sublime gardens. This afternoon, visit Togetsukyo Bridge in the heart of the vibrant Arashiyama district and walk through the bamboo forest, with its towering bamboo thickets.

**DAY 12: EXPLORE KYOTO**

This morning, visit one of Japan's most famous temples, Kinkakuji, the 'Golden

Pavilion'. Set amongst classical Japanese Zen gardens and on the edge of a reflecting pool, the temple's main hall is covered in gold leaf. Then, stroll through Nishiki Market, dubbed 'Kyoto's kitchen', where there are many interesting food and sake stores to explore before a free afternoon to spend as you wish.

**DAY 13: SAKE TASTING**

Try your hand at handkerchief dyeing and then experience the rituals of a tea ceremony. After lunch, walk the vermilion, torii gated pathways of the Fushimi Inari Shrine and tour a traditional sake brewery, where you can have a few cheeky tasters. Drive to the booming city of Osaka.

**DAY 14: FLY OSAKA TO UK**

Fly to the UK, arriving home the same or following day.

**NOT LOOKING TO JOIN A GROUP?**  
Call us to arrange a private tour.



Walk in Hell Valley

**PRICES & DEPARTURES**

| 2020 DATES      |        |
|-----------------|--------|
| 16 May - 29 May | £6,290 |
| 05 Sep - 18 Sep | £6,490 |
| 2021 DATES      |        |
| 15 May - 28 May | £6,690 |
| 04 Sep - 17 Sep | £6,790 |

**Flight and supplement information**

- Based on London Heathrow departures
- Regional UK departures available
- Flight upgrades available on request
- Land only from £5,590 (Sapporo - Osaka)
- Single room from £1,290

**EXTEND YOUR STAY...**

**SEOUL EXTENSION**  
4 days from £490pp

**TAIPEI EXTENSION**  
4 days from £490pp

**HIROSHIMA & MIYAJIMA EXTENSION**  
3 days from £950pp

Visit page 50 to learn more about all of our extensions and stopovers.

# JAPAN UNCOVERED

17 DAYS FROM

PER PERSON £6,690

FLIGHT INCLUSIVE FROM THE UK

ALL MEALS

## TOUR TICKLIST

- ✓ Discover historic Kyoto & Nara
- ✓ Reflect in Hiroshima & Miyajima
- ✓ Admire beautiful Mount Fuji
- ✓ See the snow monkeys
- ✓ Feel the rush of Tokyo & Osaka
- ✓ Explore Kanazawa & Takayama



Stroll through the gates at Fushimi Inari Shrine

## PRICE INCLUDES

- 15 breakfasts, 14 lunches & 15 dinners
- International flights and current taxes
- Domestic transportation
- 3 star plus – 4 star accommodation
- Touring with guides and entrance fees



Visit a wasabi farm

## ▶ EXPERIENCES YOU'LL LOVE

- ▶ One of Japan's most famous condiments, wasabi, is an essential element in Japanese cuisine. Learn about its cultivation on a traditional farm and admire the landscapes.
- ▶ Admire the elaborately dyed silk creations of artist Kubota Itchiku at his eponymous art museum. Itchiku singlehandedly revived the traditional and beautiful technique of 'tsujigahana'.
- ▶ Arguably the world's most famous pedestrian crossing, seen in many a film and television show, witness the organised chaos and bright lights of Tokyo's Shibuya Crossing for yourself.

## ITINERARY

### DAYS 1-2: FLY OVERNIGHT TO OSAKA

Fly overnight to the lively, fast-paced city of Osaka! Depending on your time of arrival, the rest of the day is at leisure to start soaking up the local culture.

### DAY 3: DISCOVER NARA

Spend the morning in Nara, the small, history-filled city that was Japan's first capital. Stroll through Nara Park to Todaiji Temple and admire the traditional Isuien Garden. Return to Osaka and visit the impressive Osaka Castle before cruising along the Yodogawa River.

### DAY 4: HIMEJI CASTLE

Depart Osaka for Hiroshima, stopping en route to explore the magnificent 17th-century Himeji Castle and the neighbouring Kokoan, a traditional-style garden.

### DAY 5: EXPLORE HIROSHIMA

Hiroshima is a vibrant, forward-thinking city that is a pleasure to explore. Reflect on the city's tragic past at the Peace Memorial Park and Museum paying homage to the victims of the 1945 atomic bomb. Next, take the ferry to the holy island of Miyajima to visit the Itsukushima Shrine and enjoy some time at leisure.

### DAY 6: BULLET TRAIN TO KYOTO

Start the day with a journey by bullet train to Kyoto. Capital for 1,000 years, this enchanting city is the epitome of traditional Japan. Visit Ryoanji Temple, home to Japan's most famous zen garden and Kinkakuji Temple, also known as 'Golden Pavilion'.

### DAY 7: JAPANESE TEA CEREMONY

Enjoy one of Kyoto's most delightful spots, Kiyomizu, a 17th-century Buddhist temple,

before experiencing the age-old rituals of a traditional tea ceremony. After lunch, visit Fushimi Inari Shrine, renowned for its 10,000 red torii gates.

### DAY 8: TRAVEL TO KANAZAWA

Travel by road to Kanazawa. Meander through Kenrokuen, one of the Three Great Gardens of Japan, before viewing the excellent art collection of the Kanazawa 21st Century Museum of Contemporary Art.

### DAY 9: WASHI PAPER MAKING

Visit the Nomura Samurai House and Garden before departing Kanazawa. Stop in Gokayama for lunch and a hands-on washi paper making workshop. Continue to Shirakawago, where you will explore the 300-year-old Gassho-style Wada House, before reaching Takayama.

### DAY 10: EXPLORE TAKAYAMA

Browse the local handicrafts and fresh produce at the Miyagawa morning market and wander past some of the lovely traditional houses. Also visit several of the excellent local museums, including the Festival Floats Museum, Kusakabe Folk Crafts Museum and Takayama Jinya followed by a stroll down Kamisannomachi Street.

### DAY 11: TRAVEL TO NAGANO

Travel to Matsumoto and explore the formidable 16th-century Matsumoto Castle. Visit a miso house and learn about this famous Japanese seasoning. Also spend some time at a wasabi farm to learn about its cultivation before continuing to Nagano.

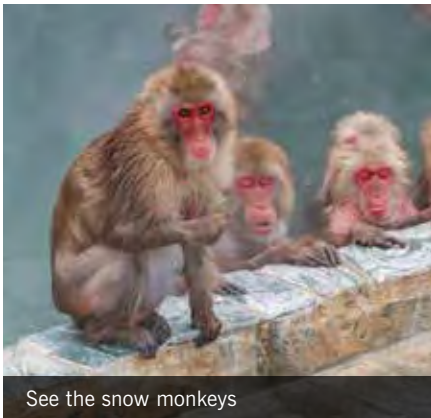
**CLASSIC**  
JAPAN

PHYSICAL RATING



**IS THIS TOUR FOR YOU?**

Our most extensive tour of Japan includes all the classic sights and key cultural activities. Featuring modern cities, historical sights and beautiful landscapes it ensures you'll get the most from this fascinating land.



See the snow monkeys



Walk the Shibuya Crossing

**DAY 12: SNOW MONKEYS**

Travel deeper into the Japanese Alps to see the Japanese macaques (snow monkeys) bathe and play in their hot spring pool at the Jigokudani Monkey Park. Continue to Zenkoji, one of Japan's most prolific Buddhist temples.

**DAY 13: MOUNT FUJI**

Travel to the Fuji Five Lakes area. Ascend by road to the 5th station (weather permitting), roughly halfway up Mount Fuji, for fantastic views over the surrounding landscapes. Also visit the Itchiku Kubota Art Museum to view the elaborate dyed silk creations of artist Kubota Itchiku.

**DAY 14: EXPLORE HAKONE**

Begin the day with a cruise on the peaceful waters of Lake Ashi. Next, soar high on the Hakone Ropeway over the hilltops to the volcanic Owakudani Valley and discover the dramatic natural hot springs of Mount Hakone. Later, proceed to Tokyo.

**DAY 15: DISCOVER TOKYO**

A dazzling, high-tech metropolis, Japan's capital has wonderfully traditional roots. Start your explorations at the Imperial Palace East Garden, visit Meiji Shrine and stop by the famous Shibuya Crossing.

**DAY 16: MORE TOKYO**

Stroll the vibrant Asakusa district and soak up the ambiance of Sensoji, Tokyo's oldest Buddhist temple. Ascend to the observation deck of the 634-metre Skytree and enjoy lunch in a local restaurant. The afternoon is free until the evening, when you will board a traditional yakata boat for a dinner cruise.

**DAY 17: FLY TOKYO TO UK**

Fly to the UK, arriving home the same or following day.

**NOT LOOKING TO JOIN A GROUP?**

Call us to arrange a private tour.

**PRICES & DEPARTURES**

**2020 DATES**

|                 |          |                  |        |
|-----------------|----------|------------------|--------|
| 16 Mar - 01 Apr | £6,990   | 04 May - 20 May* | £6,790 |
| 18 Mar - 03 Apr | SOLD OUT | 06 May - 22 May* | £6,790 |
| 19 Mar - 04 Apr | £7,190   | 08 May - 24 May* | £6,790 |
| 20 Mar - 05 Apr | SOLD OUT | 02 Sep - 18 Sep* | £6,890 |
| 21 Mar - 06 Apr | £7,190   | 03 Sep - 19 Sep* | £6,890 |
| 22 Mar - 07 Apr | SOLD OUT | 04 Sep - 20 Sep* | £6,890 |
| 24 Mar - 09 Apr | SOLD OUT | 21 Sep - 07 Oct  | £6,890 |
| 26 Mar - 11 Apr | SOLD OUT | 08 Oct - 24 Oct  | £6,790 |
| 27 Mar - 12 Apr | £7,190   | 15 Oct - 31 Oct  | £6,790 |
| 28 Mar - 13 Apr | SOLD OUT | 22 Oct - 07 Nov  | £6,790 |
| 30 Mar - 15 Apr | £7,190   | 29 Oct - 14 Nov  | £6,790 |
| 01 Apr - 17 Apr | £7,190   | 05 Nov - 21 Nov  | £6,690 |
| 04 Apr - 20 Apr | £7,190   |                  |        |

**2021 DATES**

|                 |        |                  |        |
|-----------------|--------|------------------|--------|
| 17 Mar - 02 Apr | £7,290 | 03 Apr - 19 Apr  | £7,390 |
| 19 Mar - 04 Apr | £7,390 | 03 May - 19 May* | £6,990 |
| 20 Mar - 05 Apr | £7,490 | 05 May - 21 May* | £6,990 |
| 21 Mar - 06 Apr | £7,490 | 07 May - 23 May* | £6,990 |
| 22 Mar - 07 Apr | £7,490 | 01 Sep - 17 Sep* | £7,290 |
| 23 Mar - 08 Apr | £7,490 | 03 Sep - 19 Sep* | £7,290 |
| 24 Mar - 09 Apr | £7,490 | 08 Sep - 24 Sep* | £7,290 |
| 25 Mar - 10 Apr | £7,490 | 21 Sep - 07 Oct  | £7,290 |
| 26 Mar - 11 Apr | £7,490 | 08 Oct - 24 Oct  | £7,190 |
| 27 Mar - 12 Apr | £7,490 | 15 Oct - 31 Oct  | £7,190 |
| 28 Mar - 13 Apr | £7,490 | 22 Oct - 07 Nov  | £7,190 |
| 29 Mar - 14 Apr | £7,490 | 29 Oct - 14 Nov  | £7,090 |
| 01 Apr - 17 Apr | £7,390 | 05 Nov - 21 Nov  | £6,990 |

\*includes the sumo wrestling tournament

**Flight and supplement information**

- Based on London Heathrow departures
- Regional UK departures available
- Flight upgrades available on request
- Land only from £5,990 (Osaka - Tokyo)
- Single room from £1,690



SEE SUMO WRESTLING

On most May and September departures\*, there is an extra special addition to day 15: a sumo tournament. Many of Japan's most ancient traditions are preserved in the sport, and the rituals involved in its performance are as fascinating to watch as the wrestling itself. Contact us for more information.



SEE SHIBAZAKURA FESTIVAL

On the May departures, instead of visiting the Itchiku Kubota Art Museum on day 13, a visit to the Fuji Shibazakura Festival has been included. This is the best time of the year and one of the most scenic places in Japan to see the pink moss phlox in full bloom! Contact us for more information.

**+ EXTEND YOUR STAY...**

**HONG KONG GLIMPSES STOPOVER**

3 days from £290pp

**ESSENTIAL DUBAI STOPOVER**

3 days from £190pp

**HONG KONG & MACAO STOPOVER**

5 days from £640pp

Visit page 50 to learn more about all of our extensions and stopovers.

NEW

# ANCIENT EMPIRES OF CHINA & JAPAN

20 DAYS FROM

PER PERSON £6,490

FLIGHT INCLUSIVE FROM THE UK

ALL MEALS

## TOUR TICKLIST

- ✓ Discover historic Beijing
- ✓ See the Terracotta Warriors
- ✓ Admire Shanghai's bright lights
- ✓ Reflect in Hiroshima
- ✓ Admire Kyoto's temples
- ✓ Explore bustling Tokyo



Walk along the Great Wall

## PRICE INCLUDES

- 18 breakfasts, 17 lunches & 18 dinners
- International flights and current taxes
- Domestic transportation
- 3 star plus – 4 star accommodation
- Touring with guides and entrance fees
- Visa fees for UK passport holders (China)



See the historic hutongs of Beijing

## ▶ EXPERIENCES YOU'LL LOVE

- ▶ Explore the narrow, atmospheric alleyways of Beijing's old hutongs. Visit a family in their home, a traditional courtyard residence, to get a better idea of the culture and history of these neighbourhoods.
- ▶ Wander through the delightful Bikan Historical Quarter, stretched along Kurashiki's Edo Period canals, taking in the picturesque scenes of weeping willows, old stone bridges and lovely, traditional architecture.
- ▶ Ascend to the observation deck of the new Orizuru Tower. Rising high above Hiroshima it offers beautiful views over the Peace Memorial Park, the A-Bomb Dome and the city as a whole.

## ITINERARY

### DAYS 1-2: FLY OVERNIGHT TO BEIJING

Fly overnight to China's historical capital, Beijing. Depending on your time of arrival, the rest of the day is yours to start soaking up the local culture.

### DAY 3: WALK ON THE GREAT WALL

This morning is dedicated to China's most iconic sight – the Great Wall. Taking a walk on this incredible structure is the best way to appreciate the sheer magnificence of the wall itself and the dramatic scenery that surrounds it. In the afternoon, enjoy the idyllic landscapes of the Summer Palace. End the day enjoying a traditional Peking Duck dinner.

### DAY 4: EXPLORE THE FORBIDDEN CITY

Begin the day soaking up the harmonious ambience of the glorious Temple of Heaven where you can mingle with the locals and watch or participate as they practise Tai Chi, dance or play cards. Next, take a ride through a traditional hutong neighbourhood by rickshaw and visit a family at home, to learn about life living in the hutongs. Later, head to Beijing's symbolic heart, Tiananmen Square, before entering the sprawling magnificence of the Forbidden City to explore this complex full of imperial riches.

### DAY 5: TRAVEL TO XIAN

Board the bullet train to the ancient city of Xian. In the evening, enjoy a traditional Shui Jiao dumpling dinner and a lively Tang Dynasty dance show.

### DAY 6: TERRACOTTA WARRIORS

After their fortuitous discovery in the 1970s, the Terracotta Army of China's first Emperor, Qin Shi Huang, has intrigued visitors ever

since. Spend the morning viewing the enigmatic ranks of life-sized warriors, followed by a visit to the workshop of the craftsmen who recreate them. Later, stroll on the beautifully preserved 14th-century city walls that enclose Xian's old town.

### DAY 7: FLY TO GUILIN

Visit the Little Wild Goose Pagoda and then fly to the beautiful city of Guilin.

### DAY 8: CRUISE THE LI RIVER

Take a relaxed cruise along the Li River to the charming town of Yangshuo. Around every river bend is a view to take your breath away as jagged karst peaks tower over rural scenes of lush greenery, grazing buffalo and local fishermen. Here, enjoy some time strolling along West Street and visit the local markets.

### DAY 9: VISIT REED FLUTE CAVE

Return to Guilin. En route, see the colourful stalagmites and stalactites of Reed Flute Cave and visit the South China Pearl Factory.

### DAY 10: FLY TO SHANGHAI

Begin today with a stroll around Ronghu Lake and admire the Sun and Moon Pagodas – two towering examples of traditional Chinese Buddhist architecture before flying to the cosmopolitan city of Shanghai.

### DAY 11: EXPLORE SHANGHAI

Shanghai is China's great metropolis, where east and west collide on streets lined with futuristic skyscrapers and 10th-century temples. Start with a visit to the peaceful Yu Garden, pass through the old town and visit the Silk Factory. View the city at night from the Huangpu River on a panoramic cruise.



**CLASSIC**  
CHINA & JAPAN

PHYSICAL RATING

**IS THIS TOUR FOR YOU?**  
The ultimate tour for those wishing to combine the very best of two ancient nations. Join us on an incredible journey from Beijing to Tokyo by road, boat, rail and air on this epic three-week tour!



Discover the majestic landscapes of Guilin



Visit the manicured gardens of Korakuen

**DAY 12: GOODBYE CHINA, HELLO JAPAN**

It's time to say goodbye to China and hello to Japan! Fly to the vibrant city of Osaka.

**DAY 13: OSAKA CASTLE**

Explore Osaka Castle, take a short cruise along the Yodogawa River and stroll through vibrant Dotonbori, a restaurant mecca, where you can sample local delicacies for lunch. The remainder of the day is free for you to explore this fascinating city.

**DAY 14: DISCOVER OKAYAMA & KURASHIKI**

Transfer by bullet train to Okayama and visit Korakuen Garden, one of the 'Three Great Gardens of Japan'. Continue to Kurashiki to explore the beautifully-preserved Bikan Historical Quarter, where the streets along the banks of the Kurashiki River are lined with white-walled kominka (traditional houses). Continue to Hiroshima, a vibrant and forward-thinking city.

**DAY 15: EXPLORE HIROSHIMA & MIYAJIMA**

Hop on a ferry to the holy island of Miyajima and visit Itsukushima Shrine. Return to Hiroshima and find a moment to reflect at the Peace Memorial Park and Museum, paying homage to the victims of the 1945 atomic bomb. Later, ascend to the observation deck of Orizuru Tower and enjoy the panoramic views.

**DAY 16: TRAVEL TO KYOTO**

Transfer by bullet train to Kyoto, imperial capital for 1,000 years. Visit Ryoanji Temple, home to Japan's most famous Zen garden and Kinkakuji Temple, also known as the 'Golden Pavilion'.

**DAY 17: EXPLORE KYOTO**

Visit Fushimi Inari Shrine, remarkable for its 10,000 torii gates and then head to Nishiki Market, also known as 'Kyoto's Kitchen' with its lively open-air market specialising in all things food! Also visit a restored wooden Japanese townhouse to experience the rituals of a tea ceremony and try your hand at the traditional art of origami.

**DAY 18: BULLET TRAIN TO HAKONE**

Transfer by bullet train to Hakone. Upon arrival, enjoy a boat trip on Lake Ashi before venturing up the Komagatake Ropeway where the views of the surrounding landscape and Mount Fuji will be breathtaking but weather dependent of course! Later, continue to Tokyo, Japan's capital city.

**DAY 19: CONTRASTS OF TOKYO**

Tokyo is the ultimate 24-hour city, but look behind its frantic, high-tech frontage and you will find plenty of tranquil backstreets and old temples to explore. Begin at the observation deck of the 634-metre Skytree, before wandering through the old district of Asakusa. Stop to explore the ancient Buddhist Sensoji Temple and drive past the Imperial Palace Plaza. Later, soak up the atmosphere at the peaceful Meiji Jingu Shrine. End your tour with a dinner cruise on the Tokyo Bay.

**DAY 20: FLY TOKYO TO UK**

Fly to the UK, arriving home the same or following day.

**NOT LOOKING TO JOIN A GROUP?**  
Call us to arrange a private tour.

**PRICES & DEPARTURES**

| 2020 DATES      |        |                 |        |
|-----------------|--------|-----------------|--------|
| 23 Mar - 11 Apr | £6,490 | 14 Sep - 03 Oct | £6,690 |
| 18 May - 06 Jun | £6,490 | 12 Oct - 31 Oct | £6,690 |
| 2021 DATES      |        |                 |        |
| 22 Mar - 10 Apr | £6,990 | 13 Sep - 02 Oct | £6,990 |
| 17 May - 05 Jun | £6,790 | 11 Oct - 30 Oct | £6,990 |

**Flight and supplement information**

- Based on London Heathrow departures
- Regional UK departures available
- Flight upgrades available on request
- Land only from £5,890 (Beijing - Tokyo)
- Single room from £1,490
- Tipping paid locally RMB 410 (China)



Gaze at the Terracotta Army

NEW

# SCENIC SOUTH KOREA

13 DAYS FROM

PER PERSON £4,490

FULLY INCLUSIVE FROM THE UK

ALL MEALS

## TOUR TICKLIST

- ✓ Explore bustling Seoul
- ✓ Enjoy tea tasting in Boseong
- ✓ Discover picturesque Busan
- ✓ Take a ride on a cable car
- ✓ Visit Mt Seorak National Park
- ✓ Spend time in Gyeongju, 'the museum without walls'



Enjoy the majesty of Anapji Pond, Gyeongju National Park

## PRICE INCLUDES

- 11 breakfasts, 10 lunches & 11 dinners
- International flights and current taxes
- Domestic transportation
- 3 star plus – 4 star accommodation
- Touring with guides and entrance fees



See the Freedom Bridge of the DMZ

## ▶ EXPERIENCES YOU'LL LOVE

- ▶ Embark on an informative and unusual adventure to the DMZ, the buffer zone between the Koreas. Your visit will include the Bridge of Freedom, DMZ Theatre & Exhibition Hall and the 3rd Infiltration Tunnel.
- ▶ As part of discovering traditional Korean lifestyle at Naganeupseong Fortress Village, you can try your hand at one of Korea's oldest cultural arts – handkerchief dyeing.
- ▶ First performed on the Edinburgh Fringe in 1997, the Nanta is a showcase of Korean culture and performance art, presented as a non-verbal show, instead using music and motion and integrating a traditional Korean Samulnori rhythm.

## ITINERARY

### DAYS 1-2: FLY OVERNIGHT TO SEOUL

Fly overnight to Seoul, the dazzling capital city of South Korea. Depending on your time of arrival, the rest of the day is yours to start soaking up the local culture. This evening meet your National Escort and fellow travellers to enjoy dinner at a local restaurant.

### DAY 3: EXPLORE SEOUL

A dynamic, 24-hour city, amongst the skyscrapers, nightlife districts and colossal shopping malls of Seoul there is an exceptional amount of culture and tradition, from busy teahouses to magnificent palaces. Start your explorations at the immense Gyeongbok Palace, which will include the changing of the guard ceremony, before exploring the National Folk Museum. Learn to cook delicious Korean classic 'bibimbap' in a cookery class – you'll get to eat it for lunch – before strolling Insadong Antique Alley and visiting UNESCO-listed Jongmyo Royal Shrine. End the day with panoramic views over this sprawling city at the N Seoul Tower.

### DAY 4: VISIT SOSWAEWON GARDEN

Travel out of Seoul to the city of Damyang where you'll discover the beauty of Soswaewon. This private garden built in the 16th century in the traditional style features essential elements to bring harmony, such as flowing water, trees and grasses. Wander the bamboo forest of Juknokwon before continuing to Gwangju, where you'll spend some time discovering this artistic hub full of fascinating history.

### DAY 5: EXPLORE SEONAMSA TEMPLE

Head to Boseong, considered the best place in Korea to grow tea, and visit a green tea plantation, learning all about its production and enjoying a tasting. Continue to Suncheon for a stop at the 6th-century Seonamsa Temple. A UNESCO World Heritage Site, the temple grounds are also home to a beautiful arched stone bridge. Also visit Naganeupseong Fortress Village for a glimpse at a more traditional Korean lifestyle and a chance to take part in a handkerchief dyeing experience.



Explore the grounds of Seonamsa Temple



Marvel at the gates of Bulguksa Temple





Experience the bustle of South Korea's capital city, Seoul

## CLASSIC

### SOUTH KOREA

PHYSICAL RATING

**IS THIS TOUR FOR YOU?**

With its complex history, skyscrapers and centuries-old temples, this tour has something for everyone – from bustling cities and stunning countryside to UNESCO world heritage-listed national forests. It is a tour full of contrast.



Explore the bamboo forests of Juknokwon

#### DAY 6: TRAVEL TO BUSAN

Head to Yeosu and ride the cable car over beautiful scenery and open water to Dolsan Island. Continue to Odongdo Island for more spectacular landscapes and take some time to appreciate the array of wild flowers that flourish here before travelling to the port city of Busan.

#### DAY 7: DISCOVER BUSAN

The laidback to Seoul's bustle, Busan is a city full of character and traditional features as well as mountains, beaches, temples and exquisite seafood. Start the day with a city overview from the top of Busan Tower, before browsing the wares at Kukje Market and Jagalchi Fish Market. Walk over the Oryukdo Skywalk, a glass bridge set on a seaside cliff, soak up the peaceful nature of Dongbaekseom Island, and feel the sand between your toes on Haeundae Beach. Drive to Gyeongju.

#### DAY 8: EXPLORE GYEONGJU

A city of cultural and historical relics, Gyeongju is called 'the museum without walls'. Capital of the Silla Kingdom for over 1,000 years the city is home to a staggering number of tombs, temples, statues and ruins, some of which you'll explore today. Begin at the Gyeongju National Museum before visiting Tumuli Park, a collection of royal tombs, and Anapji Pond. Then head just out of the city to the magnificent UNESCO World Heritage Bulguksa Temple, considered the pinnacle of Silla architecture, and Seokguram Grotto.

#### DAY 9: VISIT NAKSANSAN TEMPLE

Travel to Sokcho stopping en route to explore the 1,300-year history of the Naksansa Temple, a seven-storey stone building overlooking the East Sea.

#### DAY 10: EXPLORE MOUNT SEORAK

Mount Seorak National Park is a spectacularly scenic area of high, cloudy peaks, craggy bluffs and fragrant pine forest. Designated a UNESCO Biosphere Reserve as a habitat for many rare species of plants and animals, it is one of South Korea's most dramatic natural treasures. Enjoy a short, easy hike along a beautiful valley and see the mountaintop Gwongumseong Fortress by cable car.

#### DAY 11: RETURN TO SEOUL

Transfer to Gangneung and board a high-speed train bound for Seoul. On arrival, after lunch, there will be free time before a non-verbal performance of 'Nanta', an award-winning show which incorporates the traditional Samulnori rhythm.

#### DAY 12: VISIT THE DMZ

Created as a buffer zone between North Korea and South Korea at the end of the Korean War, the DMZ is part of the most heavily militarised border in the world. Your visit will include the Bridge of Freedom, DMZ Theatre & Exhibition Hall and the 3rd Infiltration Tunnel. Return to Seoul to stroll through the huge Gwangjang Market. A farewell dinner tonight is the perfect time to reflect on your adventures!

Special conditions apply to this day, please refer to your tour dossier for more information.

#### DAY 13: FLY SEOUL TO THE UK

Fly to the UK, arriving home the same or following day.

**NOT LOOKING TO JOIN A GROUP?**  
Call us to arrange a private tour.

#### PRICES & DEPARTURES

##### 2020 DATES

23 Mar - 04 Apr **£4,490** 19 Oct - 31 Oct **£4,590**

##### 2021 DATES

22 Mar - 03 Apr **£4,990** 18 Oct - 30 Oct **£4,890**

##### Flight and supplement information

- Based on London Heathrow departures
- Regional UK departures available
- Flight upgrades available on request
- Land only from £3,890 (Seoul - Seoul)
- Single room from £990
- Tipping paid locally US\$50



#### CHERRY BLOSSOM FESTIVAL\*

During the months of March and April, we may include a stop at the delightful Jinhae Cherry Blossom Festival on day 6. This annual event is Korea's biggest spring festival and gives you the chance to wander among the spectacular pink blossom, where there are 340,000 cherry trees!

\*Please note that the cherry blossoms are weather dependent and it is not guaranteed that they will be in bloom at the time of your visit.

NEW

# TREASURES OF TAIWAN

14 DAYS FROM

PER PERSON £3,290

FULLY INCLUSIVE FROM THE UK

ALL MEALS

## TOUR TICKLIST

- ✓ Explore bustling Taipei
- ✓ Unwind at Sun Moon Lake
- ✓ Visit the Foguangshan Monastery
- ✓ Relax on the beach at Kenting
- ✓ Discover the Taroko Gorge
- ✓ Journey on the high-speed rail



Admire Pa Cien Pagoda overlooking Sun Moon Lake

## PRICE INCLUDES

- 12 breakfasts, 11 lunches & 12 dinners
- International flights and current taxes
- Domestic transportation
- 3 star plus – 4 star accommodation
- Touring with guides and entrance fees



Relax in Taitung's hot springs

## ▶ EXPERIENCES YOU'LL LOVE

- ▶ Take some time to relax and unwind in the warm, mineral-rich volcanic waters of Taitung – you'll have time to make the most of them at your hotel which has hot spring pools for you to enjoy.
- ▶ Visit the unique spectacle of Foguangshan, Taiwan's largest monastery and explore the Buddha Museum, the fascinating 'Buddha Land' with its 36-metre Buddha and enjoy a delicious vegetarian lunch in the monastery's dining room.
- ▶ Make a stop at the Kavalan Whisky Distillery, one of Taiwan's most famous, where you can learn all about the process of creating Taiwanese whisky.

## ITINERARY

### DAYS 1-2: FLY OVERNIGHT TO TAIPEI

Fly overnight to Taipei, Taiwan's buzzing capital. Depending on your time of arrival, the rest of the day is yours to start soaking up the local culture. This evening meet with your National Escort and fellow travellers to enjoy dinner at a nearby, local restaurant.

### DAY 3: A DAY IN TAIPEI

Nestled in a basin surrounded by mountains, Taipei is a laidback and vibrant city that, as well as being packed with the upmarket and ultramodern, is a bastion of Taiwan's wonderfully rich heritage. Begin your explorations at the National Palace Museum, home to the world's largest and finest collection of Chinese art and artefacts, and the Martyrs' Shrine. This afternoon, visit CKS Memorial Hall, Longshan Temple and make a photostop at the world-famous Taipei 101.

### DAY 4: SCENIC SUN MOON LAKE

Depart Taipei to journey towards the heart of the island to what is arguably Taiwan's most scenic spot – Sun Moon Lake. Visit the Wen Wu Temple before embarking on a motorboat cruise around the lake for picture perfect views of the area's beautiful landscapes. You'll also visit the Holy Monk Shrine, Pa Cien Pagoda and the aboriginal village of Tehua.

### DAY 5: TEA PLANTATION

Begin today with a visit to a famous tea farm to discover all about the process of tea growth and production before taking the cable car to Formosan Cultural Village. There will also be some time at leisure, with the option of biking on trails around Sun Moon Lake, listed as one of the 10 most beautiful places to cycle in the world.



Discover the Taipei skyline



**CLASSIC**  
TAIWAN

PHYSICAL RATING

**IS THIS TOUR FOR YOU?**  
Explore the cities of Taipei and Tainan, where ancient and modern sit side by side, and lose yourself in the natural beauty of Sun Moon Lake and Taroko National Park. Magical Taiwan has so much to offer!



Explore the dramatic Taroko Gorge



Discover Foguangshan's Buddha Museum

**DAY 6: DISCOVER TAINAN**

Depart Sun Moon Lake and travel to Tainan. Taiwan's oldest city and capital until 1887 when Taipei took over, Tainan was originally established as a trading port by the Dutch East India Company. It is renowned for its preservation of traditions and rich folk culture, and you'll start exploring at the Chikan Tower and Confucius Temple. In the afternoon, wander the old streets of the Anping district and view the sunset from Anping Harbour.

**DAY 7: EXPLORE KAOHSIUNG**

Head south to the port city of Kaohsiung where you'll admire the Dragon & Tiger Tower and the Spring & Autumn Pavilion before paying a visit to Taiwan's largest monastery, Foguanshan. Lunch here will be a vegetarian feast, before you stroll over to the main shrine, the Buddhist Museum and Great Buddha Land, where you'll find a 36-metre Buddha watching over a garden of many smaller Buddhas. Finally, see the Martyrs' Shrine at Shoushan.

**DAY 8: VISIT KENTING NATIONAL PARK**

Travel over to the beach resort of Kenting, gateway to the beautiful Kenting National Park. Consisting of a range of landscapes – low mountains, rolling hills, cliffs and deserts, all fringed by excellent beaches and helped along by a balmy tropical climate, Kenting is home to a diverse range of flora and fauna.

**DAY 9: DISCOVER SHEDING NATURE PARK**

Spend the morning amongst the rock formations and lush greenery of Sheding Nature Park with a pause to take in the ocean views at Oluanpi Lighthouse. The rest of the day is at leisure.

**DAY 10: OCEAN DRIVE TO CHIHPEN**

Depart Kenting and drive along the beautiful east coast to Taitung, admiring the ocean views throughout the journey. Continue to Chihpen, famous for its hot springs. On arrival, your afternoon will be free to relax and bathe in the thermal waters at your hotel. Tonight's dinner will be accompanied by a performance of traditional music and dance.

**DAY 11: HEAD TO TAROKO**

Travel northwards to Hualien, the gateway to the magnificent Taroko National Park. En route there will be a series of stops including Donghe, where you may spot wild monkeys, and the scenic Cisingtan Lake, where you can head out on an optional bike ride on the lakeshore.

**DAY 12: EXPLORE TAROKO NATIONAL PARK**

Encompassing sea cliffs, soaring peaks and a famously picturesque gorge, Taroko National Park is home to a huge diversity of features and habitats and shelters a great range of plant and animal species. Today your visits will include the Gorge Gateway, the Eternal Spring Shrine and Swallow Grotto and you can enjoy a leisurely walk through the beautiful landscapes.

**DAY 13: RETURN TO TAIPEI**

Take a photo stop at Cingshuei Cliff for beautiful views and visit the Kavalan Whisky Distillery, where a few tastings will be in order. Return to Taipei via Luodong by high-speed rail and then enjoy a farewell dinner, the perfect opportunity to reflect on your adventures with your fellow passengers.

**DAY 14: FLY TAIPEI TO THE UK**

Fly to the UK, arriving home the same or following day.

**PRICES & DEPARTURES**

| 2020 DATES      |        |                 |        |
|-----------------|--------|-----------------|--------|
| 11 Apr - 24 Apr | £3,290 | 10 Oct - 23 Oct | £3,490 |
| 2021 DATES      |        |                 |        |
| 10 Apr - 23 Apr | £3,790 | 09 Oct - 22 Oct | £3,790 |

**Flight and supplement information**

- Based on London Heathrow departures
- Regional UK departures available
- Flight upgrades available on request
- Land only from £2,690 (Taipei - Taipei)
- Single room from £990
- Tipping paid locally US\$40

**NOT LOOKING TO JOIN A GROUP?**

Call us to arrange a private tour.



See Chikan Tower in Tainan



# SOLO TOURS

For solo travellers looking for an easy, companionable group tour experience

Joining a Solo tour offers you a ready-made group of like-minded fellow travellers to share your holiday with. Looked after every step of the way by one of our fantastic national escorts, there are plenty of opportunities to mingle with other group members whilst you're out and about exploring and taking part in cultural experiences. There's also some built-in free time so, if you fancy, you can do some independent exploration or explore with your new-found friends.

## WHAT'S INCLUDED

- International airfares
- 3 star plus – 4 star accommodation with a guaranteed room of your own
- Most meals
- All transportation in destination
- All entrance fees, guides and daily tours
- Small groups: max. 18 people

## NO SINGLE SUPPLEMENT

You'll travel with a small, convivial group of up to 18 fellow travellers and enjoy the comfort of having a room of your own. But the best part of all? There is no single supplement to pay!

## LIKE-MINDED PEOPLE

The other members of your Solo tour group are a ready-made group of travel companions with whom you can share those exciting moments of discovery. There are group cultural experiences incorporated throughout the tour which are the perfect opportunity to interact and form connections.

## PERFECTLY PLANNED

Whether you usually travel independently or prefer to be part of a group, our Solo tours are perfectly balanced for both. With a free day here and a few free evenings there, you can embark on your own explorations – it's up to you whether you want to do that as a group or to head out solo.

## EXPERT GUIDES

Whether you need someone by your side to navigate you through the cultural quirks or simply someone knowledgeable to point you in the direction of the best dumpling restaurant, your national escort will be there, ready and willing to do whatever they can to make your tour extraordinary.

# HIGHLIGHTS OF JAPAN

11 DAYS FROM

PER PERSON £5,490

FLIGHT INCLUSIVE FROM THE UK

MOST MEALS

## TOUR TICKLIST

- ✓ Explore historic Himeji & Nara
- ✓ Head to holy Koyasan
- ✓ Discover delightful Kyoto
- ✓ Admire beautiful Mount Fuji
- ✓ Be amazed in bustling Tokyo
- ✓ Journey on the super-fast bullet train

## PRICE INCLUDES

- 9 breakfasts (B), 2 lunches (L) & 3 dinners (D)
- International flights and current taxes
- Domestic transportation
- 3 star plus – 4 star accommodation
- Touring with guides and entrance fees



Contemplate Kodaiji's Zen garden

## ▶ EXPERIENCES YOU'LL LOVE

- ▶ Begin your journey towards inner peace learning the basics of Zen meditation in the tranquil surroundings of a beautiful old temple in Kyoto.
- ▶ Experience the perfect display of Japanese culture, witness the preparation and performance involved in the 'Way of Tea', a traditional tea ceremony.
- ▶ No visit to Japan would be complete without a ride on the world-famous bullet train, so sit back and relax as you travel at 200 miles per hour through Japan's landscapes.



Explore Kinkakuji 'Golden Pavilion' Temple

## ITINERARY

### DAYS 1-2: FLY OVERNIGHT TO OSAKA

Fly overnight to the lively, fast-paced city of Osaka. Depending on your time of arrival, the rest of the day is yours to start soaking up the local culture.

### DAY 3: HIMEJI CASTLE

Meet the group in the hotel lobby and together begin your first day of exploring Japan! Travel to Himeji to visit the city's magnificent feudal era castle, before strolling through the beauty of Kokoen, a classical Japanese garden. After lunch in a local restaurant, return to Osaka and spend some time at leisure. This evening, enjoy a welcome dinner with your fellow travellers. (B,L,D)

### DAY 4: EXPLORE KOYASAN

This morning, we head for the holy mountain of Koyasan, home to a cluster of over 100 monasteries nestled in a valley and enclosed by peaks. Enjoy the tranquillity of Kongobuji Temple and wander around Okunion – a vast, atmospheric cemetery of 200,000 stupas. Continue to the charming city of Nara where the rest of the day is at leisure. (B)

### DAY 5: FROM NARA TO KYOTO

Together we will stroll through Nara Park to Todaiji Temple, seeing the resident sika deer en-route, before exploring Isuien Garden. Travel by road to Kyoto. An enchanting city, Kyoto's 1,000-year stint as Japan's capital has left behind an impressive legacy! Sightseeing today includes a visit to Kinkakuji, also known as 'Golden Pavilion' and Ryoanji Temple, home to Japan's most famous zen garden. (B,L)

### DAY 6: TEA CEREMONY & ZEN MEDITATION

An exciting day awaits the group as we begin today with some traditional Japanese activities. At the 17th-century Kodaiji Temple, we will experience the age-old rituals of a traditional tea ceremony, before a session of zen meditation. Return to the hotel and enjoy the rest of the day at leisure. (B)

### DAY 7: FUJI FIVE LAKES

Travel on the super-fast bullet train to the Fuji Five Lakes area and board a coach to explore. Later, we will take a boat cruise on spectacular Lake Ashi before soaring high on the Komagatake Ropeway for gorgeous Fuji views. There is free time for lunch and later, we will get together for dinner. (B,D)

### DAY 8: MOUNT FUJI

Today, we travel to Mount Fuji and ascend by road to the 5th Station (weather permitting) for spectacular views of the surrounding landscapes. Proceed to Tokyo, Japan's dazzling capital city. (B)



Visit Todaiji Temple

SOLO  
JAPAN

PHYSICAL RATING



## IS THIS TOUR FOR YOU?

Uncover Japan's best-known cities as well as the hidden treasures of Himeji and Koyasan and view Mount Fuji. There will also be time at leisure to further explore on your own or with your fellow travellers!



Cruise Lake Ashi



Admire the Tokyo skyline

## DAY 9: EXPLORE TOKYO

Visit the observation deck of the 634-metre Skytree, the world's tallest free-standing tower, before seeking out the tranquillity of Sensoji Temple. Enjoy free time for lunch, then come back together to stroll through Hamarikyu Gardens. (B)

## DAY 10: FREE TIME IN TOKYO

Today is a free day for you to spend as you wish; your guide will be on hand to give options and ideas. Tonight, we will get together for our final meal as a group where we can share our highlights of Japan! (B,D)

## DAY 11: FLY TOKYO TO UK

Fly to the UK, arriving home the same or following day. (B)

## NOT LOOKING TO JOIN A GROUP?

Call us to arrange a private tour.

## EXTEND YOUR STAY...



## ESSENTIAL DUBAI STOPOVER

3 days from £190pp

## HIROSHIMA &amp; MIYAJIMA EXTENSION

3 days from £950pp

## HONG KONG GLIMPSES STOPOVER

3 days from £290pp

Visit page 50 to learn more about all of our extensions and stopovers.

## PRICES &amp; DEPARTURES

## 2020 DATES

|                 |        |                 |        |
|-----------------|--------|-----------------|--------|
| 24 Mar - 03 Apr | £5,590 | 20 Sep - 30 Sep | £5,590 |
| 27 Mar - 06 Apr | £5,690 | 20 Oct - 30 Oct | £5,490 |
| 01 Apr - 11 Apr | £5,690 |                 |        |

## 2021 DATES

|                 |        |                 |        |
|-----------------|--------|-----------------|--------|
| 26 Mar - 05 Apr | £5,790 | 20 Sep - 30 Sep | £5,790 |
| 29 Mar - 08 Apr | £5,890 | 20 Oct - 30 Oct | £5,690 |
| 01 Apr - 11 Apr | £5,890 |                 |        |

## Flight and supplement information

- Based on London Heathrow departures
- Regional UK departures available
- Flight upgrades available on request
- Land only from £4,790 (Osaka - Tokyo)
- Single room for sole use included



Feel the tranquility of Kokoan Garden



Experience a tea ceremony in Kyoto





# GO BEYOND TOURS

---

For those who want to venture off the beaten track

Featuring lesser-known destinations and unique experiences that are tantalisingly off the tourist trail, Go Beyond tours are all about helping you to see and experience places that may not have made it on to other travellers' radars. On these tours, you may find yourself away from the comforts of home, but you'll be rewarded with unique culture, interactions with local people and unforgettable sights.

## WHAT'S INCLUDED:

- International airfares
- 3 star plus – 4 star accommodation (unless stated)
- Most meals
- Guiding
- All transportation in destination
- Entrance fees and daily tours
- Small groups: max. 24 people

## UNDISCOVERED DESTINATIONS

We're proud of the fact that we really know our destinations, allowing us to offer tours that feature excursions to hidden gems and secret corners. If you're looking for a holiday that features places that you thought were too hard to reach, or maybe haven't even heard of, these are the tours for you!

## CULTURAL EXPERIENCES

Part of taking a step off the beaten track is having more authentic experiences of the places you're exploring. We make that even easier for you by including cultural visits and local encounters that will put you right in the heart of the destination. This might be visiting a small local community, staying in traditional-style accommodation, or trying your hand at an age-old indigenous craft or technique.

## EXPERT GUIDING

Your national escort and local guides, all born and bred local to your destination, are an endless source of local history, heritage and culture. Of course, they are more than willing to share that wealth of knowledge about their homeland with you. Who better to help you get to grips with a magical sight, city or region than someone who knows it like the back of their hand?

# SAPPORO & SNOW MONKEYS

12 DAYS FROM

PER PERSON £4,990

FLIGHT INCLUSIVE FROM THE UK

MOST MEALS

## TOUR TICKLIST

- ✓ Discover Tokyo's bright lights
- ✓ See the snow monkeys
- ✓ Enjoy the Sapporo Snow Festival
- ✓ Visit the Sapporo Beer Museum
- ✓ Wander along Otaru canal
- ✓ Be dazzled by Kinkakuji Temple



See the Snow Monkeys in the Japanese Alps

## PRICE INCLUDES

- 10 breakfasts (B), 4 lunches (L) & 4 dinners (D)
- International flights and current taxes
- Domestic transportation
- 3 star plus – 4 star accommodation
- Touring with guides and entrance fees



See the Sapporo Snow Festival

## ▶ EXPERIENCES YOU'LL LOVE

- ▶ Explore the Sapporo Snow Festival with its spectacular ice sculptures, some reaching 20 metres in height, magically lit up, as well as musical performances and delicious food.
- ▶ Ascend 307 metres to the Okurayuma view point, a ski jump used in the 1972 Winter Olympics, and still active today, for spectacular views over snow-covered landscapes and the city of Sapporo.
- ▶ Discover Japan's only beer museum, the home of Sapporo Beer, to learn all about its development and production and, for those who want to, a few cheeky tasters as well!

## ITINERARY

### DAYS 1-2: FLY OVERNIGHT TO TOKYO

Fly overnight to the dazzling metropolis of Tokyo, Japan's capital city. Depending on your time of arrival the rest of the day is yours to start soaking up the local culture. (D)

### DAY 3: EXPLORE TOKYO

Tokyo is the ultimate 24-hour city, but look behind its frantic, high-tech frontage and you will find plenty of tranquil backstreets and old temples to explore. Today begins with a visit to Edo-Tokyo Museum before heading to the vibrant district of Asakusa, Tokyo's old town. Here, at its heart, is Sensoji, Tokyo's oldest temple which you will explore before wandering down Nakamise, a shopping street that has been providing temple visitors with a variety of traditional, local snacks and souvenirs for centuries. Later, cruise down the Sumida River, disembarking in Hamarikyu Gardens, an Edo period Japanese garden surrounded by futuristic skyscrapers. (B,L)

### DAY 4: FLY TO SAPPORO

Transfer to the airport and fly to Sapporo. On arrival, transfer to your hotel, driving by the Clock Tower, an exquisite example of Meiji architecture. Enjoy the evening at leisure. (B)

### DAY 5: SAPPORO SNOW FESTIVAL

One of the largest events of its kind in the world, Sapporo Snow Festival attracts sculptors from all over the world to compete, which inevitably leads to bigger and better ice creations every year! Today, wander along Odori Avenue and through the Susukino district, where 100s of ice sculptures will be on display. This afternoon, transfer to the Sapporo Beer Museum. There is an optional beer tasting before popping next door to the Sapporo Beer Garden where you will dine on a 'Genghis Khan' dinner – barbeque lamb, a Sapporo special! (B,L,D)



Explore Kinkakuji Temple



## GO BEYOND

JAPAN

PHYSICAL RATING



## IS THIS TOUR FOR YOU?

Experience Japan in winter, visiting Sapporo during the world's largest Snow and Ice Festival. See the snow monkeys in the beautiful Japanese Alps, as well as discovering Japan's old and new capitals – Kyoto and Tokyo.



Wander along Otaru canal



Sample local cuisine at Nishiki Market

## DAY 6: OTARU PORT TOWN

This morning, ascend to the Okurayama viewing point, soaring up to the summit of the Sapporo Winter Olympics ski jump by chair lift – the views over the surrounding mountains are breathtaking. Later, visit the pretty port town of Otaru and take some time to walk along the streets of the village, stroll along the canal and snack on some of Japan's best sushi. (B,L)

## DAY 7: FLY TO TOKYO

Transfer to the airport and hop on a flight back to Tokyo. On arrival, head to the famous Shibuya Crossing and enjoy free time for lunch. Later, visit Meiji Jingu Shrine, a tranquil Shinto shrine set amongst a stretch of woodland. (B)

## DAY 8: MATSUMOTO CASTLE

Start the morning with a visit to the Tokyo Government Office Building's observatory deck for panoramic views of Tokyo and beyond, before transferring to Matsumoto to visit the magnificent 16th-century Matsumoto Castle, also known as 'Crow Castle' due to its black exterior. Continue to Nagano, famous for hosting the 1998 Winter Olympics. (B,D)

## DAY 9: SNOW MONKEYS

Head to Jigokudani Yaen Koen. Walk through a picturesque forested valley to the steaming hot pools where you will spend some time watching the beautiful Japanese macaques (snow monkeys) bathe and play in the warm waters. The afternoon will be spent visiting the 7th-century Zenkoji Temple, one of Japan's most popular. (B)

## DAY 10: KYOTO TEA CEREMONY

Transfer to the station and take a train to Nagoya, changing onto one of Japan's super-fast bullet trains to whizz your way through the countryside to Kyoto. On arrival, head straight to a quintessential Japanese experience – a tea ceremony. This private tea ceremony, in a Kyoto tearoom, will perfectly demonstrate the traditional rituals of tea preparation and service. (B)

## DAY 11: EXPLORE KYOTO

An enchanting city, Kyoto was capital for 1,000 years; today it is the legacy of ancient Japan, full of tranquil temples, silk-clad geisha and sublime gardens. Start your day at Kinkakuji, the 'Golden Pavilion', Kyoto's most famous temple. Continue to Nijo Castle, and after lunch visit Sanjusangendo Temple before ending the day wandering through Nishiki Market, known as 'Kyoto's kitchen'. Gather tonight for a farewell dinner. (B,L,D)

## DAY 12: FLY OSAKA TO UK

Transfer to Osaka and fly to the UK, arriving home the same or following day. (B)

## NOT LOOKING TO JOIN A GROUP?

Call us to arrange a private tour.



Visit Matsumoto Castle

## PRICES &amp; DEPARTURES

## 2020 DATES

03 Feb - 14 Feb £4,990

## Flight and supplement information

- Based on London Heathrow departures
- Regional UK departures available
- Flight upgrades available on request
- Land only from £4,290 (Tokyo - Osaka)
- Single room from £690

## EXTEND YOUR STAY...



## HIROSHIMA &amp; MIYAJIMA EXTENSION

3 days from £950pp

## HONG KONG GLIMPSES STOPOVER

3 days from £290pp

## ESSENTIAL DUBAI STOPOVER

3 days from £190pp

Visit page 50 to learn more about all of our extensions and stopovers.

# TRAILS OF JAPAN

13 DAYS FROM

PER PERSON £5,490

FLIGHT INCLUSIVE FROM THE UK

MOST MEALS

## TOUR TICKLIST

- ✓ Visit the Robot Restaurant
- ✓ Take a Taiko drumming class
- ✓ Walk around Mount Fuji's base
- ✓ Stay at a traditional ryokan
- ✓ Explore sacred Koyasan
- ✓ Chant with Buddhist monks

## PRICE INCLUDES

- 11 breakfasts (B) & 4 dinners (D)
- International flights and current taxes
- Domestic transportation
- 3 star plus – 4 star accommodation, plus ryokan and temple guesthouse
- Touring with guides and entrance fees



Try Taiko drumming

## ▶ EXPERIENCES YOU'LL LOVE

- ▶ Have a go at traditional drumming with a Taiko drumming class, taking part in an energetic and age-old ensemble performance on big, floor tom drums.
- ▶ A unique and utterly Japanese experience, an evening at Tokyo's Robot Restaurant is an unforgettable experience featuring loud music, neon lights and plenty of robot performances!
- ▶ Enjoy the peace and serenity inspired by the sacred chanting of Buddhist monks as you join them for their morning prayers in a beautiful 13th-century temple.



Learn about Japanese culture

## ITINERARY

### DAYS 1-2: FLY OVERNIGHT TO TOKYO

Fly overnight to the dazzling metropolis of Tokyo, Japan's capital city. Depending on your time of arrival, the rest of the day is yours to start soaking up the local culture.

### DAY 3: JAPANESE DRUMMING

Begin your tour of Tokyo by immersing yourself into the local culture by spending the morning trying your hand at traditional Japanese drumming with a Taiko class, where you will learn how to beat the 'wadaiko' with 'bachi'. Later, stop by Meiji Shrine and continue to the vibrant district of Harajuku before stopping by the famous Shibuya Crossing. Finally, it's time for a uniquely Tokyo experience - the Robot Restaurant! This may not be everyone's cup of tea, but well worth the insight into modern Japanese culture. (B)

### DAY 4: DISCOVER TOKYO

Tokyo is a city that is always moving forward - from the ever-changing skyline to the fashions and trends of the people who call it home. As modern as it may appear, behind the neon façade is a traditional soul that is easy to find amongst the old alleyways, temples and shrines of the Edo era. Sightseeing today begins with a stroll through the Imperial Palace East Garden and a visit to the observation deck of the 634-metre Skytree for views over the sprawling city below. You'll also stop by Sensoji Temple - Tokyo's oldest, and stroll along Nakamise shopping street. In the afternoon, explore the Edo-Tokyo Museum. Housed in the Ryogoku district of Tokyo, the museum powerfully illustrates Tokyo's past (known as Edo until 1869) right up to recent decades. (B)

### DAY 5: MOUNT FUJI

Journey out of Tokyo to the foot of mighty Mount Fuji and the Fuji Five Lakes area. Pick up a walking trail and make your way through lush alpine forest at Fuji's base, pausing often to admire the landscapes around you. (B,D)

### DAY 6: SNOW MONKEYS

Travel to Matsumoto and explore its magnificent 16th-century castle. Continue to Nagano, stopping in Yudanaka to watch the Japanese macaques (snow monkeys) at Jigokudani Monkey Park bathe and play in and around their hot spring pool. (B)

### DAY 7: JAPANESE ALPS

Travel to Hotaka and ride up into the Japanese Alps on the Shin-Hotaka Ropeway for breathtaking views over the surrounding mountains (weather permitting). Drive to Takayama, nestled high in the Hida region where you will spend the night at a ryokan, a traditional Japanese inn with onsen facilities. Here you can relax and bathe in the natural hot spring pools and experience this most traditional pastime. This afternoon you will have time to explore Kamisannomachi Street and sample the street food on offer. This evening, enjoy dinner in your ryokan. (B,D)

### DAY 8: BULLET TRAIN TO KYOTO

Take the Limited Express train to Nagoya, then board a super-fast bullet train to whizz your way through the countryside to Kyoto. Start discovering the city's rich heritage with visits to the enchanting Fushimi Inari Shrine and Kiyomizu Temple. Stroll around Higashiyama and Gion, the geisha district, with a stop at Gion Corner, which showcases the seven professional performing arts. (B)

**GO BEYOND**  
JAPAN

PHYSICAL RATING



**IS THIS TOUR FOR YOU?**

Get off the beaten track on our most active and culturally immersive tour of Japan. See the snow monkeys, walk at the foot of Mount Fuji and stay in both a traditional ryokan and a Buddhist lodge with basic shared facilities.



Experience morning prayers with monks in Koyasan



Taste Japanese Sake

**DAY 9: JAPANESE TEA CEREMONY**

Start today by visiting Kinkakuji, known as the 'Golden Pavilion' and Ryonaji. Continue to Arashiyama district to explore the striking bamboo forest and enjoy a rickshaw ride. Later, witness the rituals involved in the preparation and pouring of matcha tea in a traditional tea ceremony. (B)

**DAY 10: KYOTO CULTURE & KOYASAN**

Discover the complicated process of dressing in a traditional kimono at Nishijin Textile Centre, then try your hand at the art of origami. This afternoon, travel by road to Koyasan, where you will spend the night in a 13th-century temple guesthouse sleeping on a traditional futon on a tatami mat floor. (B,D)

**DAY 11: MORNING PRAYERS**

Rise early to join the monks for their daily morning service – hearing the recitation and chanting is a magical experience. After breakfast, take a walking tour of Koyasan. One of Japan's holiest sites, this mountain top sanctuary is full of temples and pagodas. Also visit Kongobuji Temple and Okunoin Cemetery before travelling to Osaka. (B)

**DAY 12: HIMEJI CASTLE & SAKE BREWERY**

Take a day tour to Himeji to visit the 17th-century castle which is considered a prime example of Japanese feudal period architecture. Continue to a sake brewery, where you can learn about the brewing process and enjoy some tasters. Return to Osaka and enjoy a farewell dinner. (B,D)

**DAY 13: FLY OSAKA TO UK**

Transfer to the airport and fly to the UK, arriving home the same or following day. (B)

**NOT LOOKING TO JOIN A GROUP?**

Call us to arrange a private tour.



**SEE SHIBAZAKURA FESTIVAL**

During the month of May, a special visit to the Fuji Shibazakura Festival has been included on day 5. This is the best time of the year and one of the most scenic places in Japan to see the pink moss phlox in full bloom! Contact us for more information.



**SEE SUMO WRESTLING**

On most May and September departures\*, there is an extra special addition to day 4: a sumo tournament. Many of Japan's most ancient traditions are preserved in the sport, and the rituals involved in its performance are as fascinating to watch as the wrestling itself. Contact us for more information.

**PRICES & DEPARTURES**

**2020 DATES**

|                  |        |                  |        |
|------------------|--------|------------------|--------|
| 22 Mar - 03 Apr  | £5,590 | 14 Sep - 26 Sep* | £5,590 |
| 28 Mar - 09 Apr  | £5,690 | 21 Sep - 03 Oct  | £5,590 |
| 06 Apr - 18 Apr  | £5,590 | 10 Oct - 22 Oct  | £5,490 |
| 11 May - 23 May* | £5,490 | 22 Oct - 03 Nov  | £5,490 |
| 18 May - 30 May* | £5,490 |                  |        |

**2021 DATES**

|                  |        |                  |        |
|------------------|--------|------------------|--------|
| 21 Mar - 02 Apr  | £5,790 | 13 Sep - 25 Sep* | £5,790 |
| 27 Mar - 08 Apr  | £5,890 | 20 Sep - 02 Oct  | £5,790 |
| 12 Apr - 24 Apr  | £5,790 | 11 Oct - 23 Oct  | £5,690 |
| 10 May - 22 May* | £5,690 | 18 Oct - 30 Oct  | £5,690 |
| 17 May - 29 May* | £5,690 |                  |        |

\*includes the sumo wrestling tournament

**Flight and supplement information**

- Based on London Heathrow departures
- Regional UK departures available
- Flight upgrades available on request
- Land only from £4,790 (Tokyo - Osaka)
- Single room from £1,190

**+ EXTEND YOUR STAY...**

**NARA EXTENSION**

3 days from £390pp

**HONG KONG GLIMPSES STOPOVER**

3 days from £290pp

**ESSENTIAL DUBAI STOPOVER**

3 days from £190pp

Visit page 50 to learn more about all of our extensions and stopovers.

# TAILORMADE JAPAN

The very best of Japan, exactly the way you want it

## WHAT IS A TAILORMADE HOLIDAY?

Quite simply, a tailor-made holiday is a journey designed and created especially for you. There's no one-size-fits-all when it comes to travel so tailor-made holidays are the perfect opportunity for travellers looking to embark on that once-in-a-lifetime adventure or epic honeymoon, for people who want to indulge their special interest, or for those who simply want to do things their own way.

## WHY TRAVEL TAILORMADE?

You're completely in control of the what, where and when. You can choose the pace, where to linger longer, where to pass through and where to bypass completely. The hotels (from comfortable to all out luxury), what and where you eat, the number of nights, when you depart, the sort of experiences that you'll have, is all up to you too!

Whether you have a fully formed itinerary in mind, or just a vague inkling of what you want to see and do, one of our Personal Travel Specialists will be able to craft you something marvellous – with as much, or as little, input from you as you wish.

## WHY GO TAILORMADE WITH WENDY WU?

We've long prided ourselves on our abilities to make extraordinary tours, so it goes without saying that we're also pretty good at putting together tailor-made ones. Our team of Personal Travel Specialists, who are wonderfully well-travelled and expert travel planners, are on-hand to advise and recommend – just let them know what you're after and they'll do the rest. With a wide range of accommodation options, private guiding when you want it and exceptional knowledge of local flavours and the most authentic local experiences, we've got you covered.

# How does it work?

It's really so simple – just follow the steps below:

## STEP 1

Do some research to decide where you want to go – it could be one, two or even more countries! Think about when you'd like to go, how long for and what your budget may be. For inspiration, you can always have a look at our website, or have a flick through our brochure and see not only the showstopping sights on offer, but the exciting and unusual experiences too!

## STEP 2

Give us a call or fill in a quote request form on our website and we'll call you! Together we'll go through all your thoughts and ideas, making recommendations here and advice there. Also, don't forget to mention if you have any specialist interests – you can't live without your regular game of golf, or have a penchant for migratory birds – these are the little details we can use to make the holiday extra special.



## STEP 3

Sit back, relax and leave it with us. We'll create you an itinerary that combines all your ideas and come back to you with a proposed itinerary and quote in no time.

## STEP 4

Tweak it, switch it around, change a hotel here, a meal there – you can make all the adjustments you need to make your trip exactly what you're after. You can do this as many times as you like and take as much time as you need, we are extremely flexible and always happy to help.



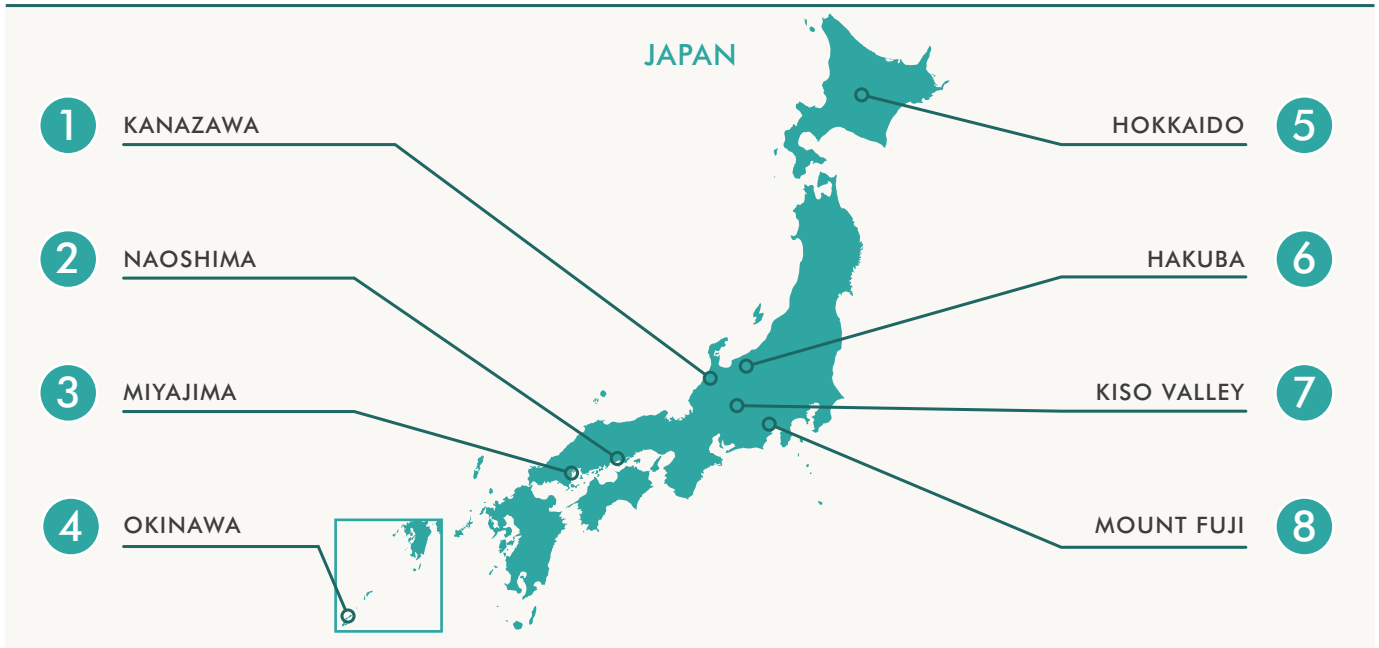
## STEP 5

When your adventure has reached that ultimate level of perfection and includes everything that you want and need, it's time to book! Call your tailor-made consultant, say the word and they will do the rest. Other than a visa form or two, all there is left to do is think about what to pack and get excited!



# Tailormade touring

Inspirational ideas for your bespoke holiday in Japan.



1

## KANAZAWA

A charming city with plenty of culture, Kanazawa has beautifully preserved samurai and geisha districts and one of Japan's best traditional gardens.



2

## NAOSHIMA

Japan's 'art island' in the waters of the Seto Inland Sea, Naoshima is known for its numerous sculptures, installations, architecture and modern art museums. With its sunny weather, lovely beaches and laidback atmosphere, the island is a delight to explore – keeping an eye out for the famous pumpkin sculptures of Yayoi Kusama as you go.



3

## MIYAJIMA

An island in the waters of the Seto Inland Sea, atmospheric Miyajima is full of historic monuments and pristine forest to explore.







4

## OKINAWA

A beautiful beach destination, a stay close to Okinawa's soft, tropical sands is the perfect way to round off a Japan adventure.

5

## HOKKAIDO

Spectacular scenery makes Hokkaido the perfect place for hiking, and you can't beat the fresh seafood during the summer months. It's great for skiing in the winter months too!

6

## HAKUBA

Set in the Japanese Alps, Hakuba is an excellent and easily accessible ski resort with some great apres options!



7

## KISO VALLEY

This beautiful valley is home to one of Japan's greatest hiking trails, the Nakasendo Way, a centuries old highway through the heart of Honshu.

8

## MOUNT FUJI

Mount Fuji is at the heart of a huge national park, an area of spectacular scenery and beautiful sights. It's also the perfect place to enjoy a stay in a ryokan, a traditional inn.





# EXTENSIONS & STOPOVERS

Make your trip of a lifetime even more memorable by extending your tour, or adding a stopover en route. An extension will allow you to delve even deeper into a region, explore a whole other country, or even give you the chance to relax on a beautiful beach. A stopover on the other hand is an easy way not only to break up your journey, but also to add a few days in a buzzing, cosmopolitan metropolis to your travel itinerary.

Most of the extensions and stopovers that you'll find in the following pages are available to be added onto any of our tours. Just ask your reservations consultant for more information on how to do just that.

- 52 Tokyo Extension
- Kyoto Extension
- 53 Nara Extension
- Hiroshima & Miyajima
- 54 Beijing Short Stay
- Great Wall Hike
- 55 Seoul Extension
- Taipei Extension
- 56 Classic South Korea
- 57 Classic Taiwan
- 58 Hong Kong Stopovers
- 59 Hong Kong Glimpses
- Hong Kong in Focus
- 60 Macao Stopovers
- 61 Taste of Macao
- Hong Kong & Macao
- 62 Dubai Stopovers
- 63 Essential Dubai
- Dubai & the Desert

# TOKYO EXTENSION

4 DAYS

## TOUR TICKLIST

- ✓ Visit tranquil Meiji Shrine
- ✓ Explore quirky Harajuku
- ✓ Discover beautiful Kamakura
- ✓ See the Great Buddha at Kotokuin



Enjoy a day trip to Kamakura

Prices are from per person, based on low season

| CATEGORY | TWIN SHARE | SOLE TRAVELLER |
|----------|------------|----------------|
| Standard | £890       | £1,550         |
| Superior | £950       | £1,690         |

### Price includes:

- Accommodation (3 nights Tokyo)
- Meals as stated (B,L,D)
- Transportation as stated
- Private touring with guides and entrance fees

### DAY 1: ARRIVE TOKYO

Travel to the dazzling metropolis of Tokyo, Japan's capital city. On arrival, meet your guide and transfer by shuttle bus and taxi to your hotel. The rest of the day is at leisure.

### DAY 2: EXPLORE TOKYO

Spend a full day exploring Tokyo with a guide. Making use of the city's excellent public transport, start by visiting Sumida Hokusai Museum, before heading to Meiji Shrine, a Shinto shrine nestled amongst an evergreen forest in the city and then continue to the fast-paced districts of Harajuku and Omotesando. This afternoon, visit the Tokyo Government Building's observatory deck for panoramic views of Tokyo and beyond. Spend some time in the bustling entertainment district of Shinjuku before arriving back at your hotel. (B)

### DAY 3: KAMAKURA DAY TRIP

Meet your guide and transfer by local train to Kamakura, a coastal city south of Tokyo, known for its dozens of unique temples. Visit Kotokuin, who's grounds houses Japan's second tallest bronze Buddha statue, and Hase Temple. Stroll through Kamakura Komachi Street, lined with different shops and restaurants, before visiting Kamakura's most important shrine, Tsurugaoka Hachiman. Transfer back to Tokyo by public transport. (B)

### DAY 4: DEPART TOKYO

Your day is at leisure until the time comes to make your way to the airport independently for your onward flight. (B)

# KYOTO EXTENSION

4 DAYS

## TOUR TICKLIST

- ✓ Admire beautiful Kodaiji Temple
- ✓ Explore Kyoto's Geisha district
- ✓ See the impressive Heian Shrine
- ✓ Stroll the Philosopher's Path



Stroll down the streets of Gion

Prices are from per person, based on low season

| CATEGORY | TWIN SHARE | SOLE TRAVELLER |
|----------|------------|----------------|
| Standard | £890       | £1,550         |
| Superior | £1,090     | £1,950         |
| Deluxe   | £1,290     | £2,550         |

### Price includes:

- Accommodation (3 nights Kyoto)
- Meals as stated (B,L,D)
- Transportation as stated
- Private touring with guides and entrance fees

### DAY 1: ARRIVE KYOTO

Arrive in Japan's ancient capital and make your own way to the hotel. The rest of the day is at leisure.

### DAY 2: KYOTO

Explore the former imperial capital with a knowledgeable local guide using public transportation. Start at either the magnificent Fushimi Inari Shrine or the Gekkeikan Okura Sake Museum. Visit the unique Sanjusangendo Temple, the beautiful temples of Kodaiji and Kenninji before strolling down the streets of Gion, Kyoto's famous geisha district. Stop at Gion Corner, a showcase for the seven professional performing arts. (B)

### DAY 3: KYOTO

Meet your guide in the hotel lobby and use public transport to reach Nijo, an ornamental castle built as the Kyoto residence of the Tokugawa shoguns. Continue to Heian shrine, famous for its huge vermilion torii gate. In the afternoon, visit Eikando Temple before continuing to Ginkakuji and the Philosopher's Path, a pleasant walk along a stone path which follows a canal lined by hundreds of cherry trees. (B)

### DAY 4: DEPART KYOTO

Your day is at leisure until the time comes to make your way to the airport independently for your onward flight. (B)

# NARA EXTENSION

2 DAYS

## TOUR TICKLIST

- ✓ View the eminent Todaiji
- ✓ Wander beautiful Nara Park
- ✓ See lovely Kasuga Shrine
- ✓ Visit Meiji-era Isuien Garden



See the local Sika deer

Prices are from per person, based on low season

| CATEGORY | TWIN SHARE | SOLE TRAVELLER |
|----------|------------|----------------|
| Standard | £390       | £650           |

### Price includes:

- Accommodation (1 night Osaka)
- Meals as stated (B,L,D)
- Transportation as stated
- Private touring with guides and entrance fees

### DAY 1: TRAVEL FROM OSAKA TO NARA

Meet your guide in the hotel lobby and walk to the closest station. Take a local train to Nara and begin your explorations! Located in the Kansai region of Japan, ancient Nara was Japan's capital before Kyoto. Start at Todaiji, a UNESCO-listed temple that is home to the Daibutsu, or Great Buddha. Take time to wander through the beautiful grounds and see the sika deer. Continue into the huge expanse of Nara Park, a designated 'Place of Scenic Beauty', home to even more sika deer who, in the Shinto religion, are considered the messengers of the gods. After lunch at a local restaurant, visit Kasuga Taisha, Nara's most celebrated shrine, and the tranquil Meiji-era garden of Isuien. Transfer back to Osaka by local train and arrive at your hotel. (L)

### DAY 2: DEPART OSAKA

Your day is at leisure until the time comes to transfer independently to the airport for your onward flight. (B)

# HIROSHIMA & MIYAJIMA

3 DAYS

## TOUR TICKLIST

- ✓ Visit the Peace Memorial Park
- ✓ Explore beautiful Shukkeien
- ✓ Discover holy Miyajima Island
- ✓ Soar up Mount Misen



Visit tranquil Miyajima Island

Prices are from per person, based on low season

| CATEGORY | TWIN SHARE | SOLE TRAVELLER |
|----------|------------|----------------|
| Superior | £950       | £1,590         |
| Deluxe   | £990       | £1,650         |

### Price includes:

- Accommodation (1 night Hiroshima & 1 night Osaka)
- Meals as stated (B,L,D)
- Transportation as stated
- Private touring with guides and entrance fees

### DAY 1: TRAVEL TO HIROSHIMA

From your hotel in Osaka, transfer to Shin Osaka station and board a bullet train to Hiroshima. Meet your guide and explore the city using public transport, starting at the poignant Peace Memorial Park. This leafy and peaceful expanse is full of beautiful memorials to those who died after the atomic bombing of 1945. Continue to the Peace Memorial Museum. Dine on the local favourite okonomiyaki for lunch before visiting the historical Shukkeien Garden. (L)

and shopping street to reach Itsukushima Shrine. The shrine is best known for its enormous vermilion torii gate, which stands in the waters of the Seto Inland Sea. This afternoon, fly up to the heady heights of Mount Misen by cable car and admire the panoramic views. Return to Hiroshima and your hotel by ferry and local train before taking the bullet train independently from Hiroshima Station back to Shin Osaka Station. (B)

### DAY 2: EXPLORE MIYAJIMA

Travel to the holy island of Miyajima by local train and ferry with your guide. Enjoy a walking tour of this peaceful island, wandering along the waterfront

### DAY 3: DEPART OSAKA

Your day is at leisure until the time comes to transfer independently to the airport for your onward flight. (B)

# BEIJING SHORT STAY

4 DAYS

## TOUR TICKLIST

- ✓ Walk on the Great Wall
- ✓ See the exquisite Summer Palace
- ✓ Explore the Forbidden City
- ✓ Visit the Temple of Heaven



Stroll around the Temple of Heaven

Prices are from per person, based on low season

| CATEGORY | TWIN SHARE | SOLE TRAVELLER |
|----------|------------|----------------|
| Standard | £390       | £650           |
| Superior | £450       | £750           |
| Deluxe   | £590       | £990           |

### Price includes:

- Accommodation (3 nights Beijing)
- Meals as stated (B,L,D)
- Transportation as stated
- Private touring with guides and entrance fees

Note: This extension is usually available with no additional flight costs if travelling with Air China.

### DAY 1: ARRIVE BEIJING

Make your way to Beijing, China's historical capital. On arrival, you will be met by your guide and transferred to your hotel. The rest of the day is at leisure to start soaking up the local culture.

### DAY 2: BEIJING

Visit China's most famous attraction, the Great Wall, which stretches over 5,000km from the Shanhaiguan Pass on the east coast to the Gobi Desert in the west. There is no better way to appreciate the magnificence of this incredible structure than walking along it. After lunch, visit a jade factory before discovering the exquisite Summer Palace, a royal garden and summer retreat for China's emperors and their families. (B,L)

### DAY 3: BEIJING

Start your sightseeing at Beijing's symbolic heart, Tiananmen Square, followed by the treasure-filled Forbidden City where you will pass under the famous portrait of Chairman Mao as you enter through the main gate. This afternoon, soak up the harmonious ambiance at the 15th-century Temple of Heaven and mingle with the locals as they practice Tai Chi or play cards. (B,L)

### DAY 4: DEPART BEIJING

Transfer from your hotel to the airport for your onward flight. (B)

# GREAT WALL HIKE

3 DAYS

## TOUR TICKLIST

- ✓ Walk Gubeikou, Jinshanling and Simatai sections of the Great Wall
- ✓ See stunning rural scenery
- ✓ Stay in Gubei Watertown



Hike on the impressive Great Wall

Prices are from per person, based on low season

| CATEGORY | TWIN SHARE | SOLE TRAVELLER |
|----------|------------|----------------|
| Superior | £650       | £1,090         |

### Price includes:

- Accommodation (1 night Beijing & 1 night Gubei Watertown)
- Meals as stated (B,L,D)
- Transportation as stated
- Private touring with guides and entrance fees

Note: This extension is usually available with no additional flight costs if travelling with Air China.

### DAY 1: ARRIVE BEIJING

Make your way to Beijing, China's historical capital. On arrival, you will be met by your guide and transferred to your hotel. The rest of the day is at leisure.

### DAY 2: GUBEIKOU – JINSHANLING HIKE

This morning, transfer to the Gubeikou section of the Great Wall, a stretch much less frequented by tourists than others. From here, start your hike towards Jinshanling; you will be walking for around 5-6 hours over a distance of 10 kilometres. Gubeikou is a rough and wild section of the Great Wall, while Jinshanling is known for its beautiful brickwork and watchtowers. Both sections offer some of the best views in China. The walk intersects a military base and will

therefore take a detour off the wall around the base, stopping at a farmhouse for lunch. After finishing your hike, transfer to Gubei Watertown for an overnight stay. After dinner you can explore the Simatai section of the Great Wall at night, enjoying wonderful views. Much of Simatai Great Wall has not been restored and offers a fantastic insight into years gone by. (B,L,D)

### DAY 3: GUBEI WATERTOWN

Spend the morning discovering the delights of Gubei Watertown. Built in the style of a Chinese ancient town, Gubei is nestled beside the Simatai section of the Great Wall and encompasses the beautiful Mandarin Duck Lake Reservoir. After lunch, return to your hotel in Beijing. (B,L)

# SEOUL EXTENSION

4 DAYS

## TOUR TICKLIST

- ✓ Discover bustling Seoul
- ✓ See Gyeongbok Palace
- ✓ Visit the National Folk Museum
- ✓ Explore Namdaemun Market

Prices are from per person, based on low season

| CATEGORY | TWIN SHARE | SOLE TRAVELLER |
|----------|------------|----------------|
| Standard | £490       | £790           |
| Superior | £590       | £990           |
| Deluxe   | £990       | £1,590         |

### Price includes:

- Accommodation (3 nights Seoul)
- Meals as stated (B,L,D)
- Transportation as stated
- Seat-in-coach touring with guides and entrance fees

Note: This extension is usually available with no additional flight costs if travelling with Asiana Airlines.



Enjoy panoramic views over Seoul

### DAY 1: ARRIVE SEOUL

Make your way to South Korea's capital, Seoul, where you will be met by a driver and transferred to your hotel to check-in. This dynamic city may be well and truly on fast-forward for everything from fashion to technology, but it is still deeply rooted in tradition – you'll find yourself stumbling upon temples and palaces amongst the glittering skyscrapers and neon billboards. Seoul is also the place for foodies, the street snacks are second to none!

### DAY 2: SEOUL

Take a full day to explore some of Seoul's many treasures with a local guide. Start at Gyeongbok Palace, the country's most famous and beautiful royal palace, where, as well as exploring, you will see the Royal

Guard Changing Ceremony. Visit the National Folk Museum of Korea, the 14th-century Jogyesa Temple which is the centre of Korean Buddhism, Namsangol Hanok Village with its restored traditional houses and the observation deck at N Seoul Tower which offers panoramic views over the city. Finish the day at Namdaemun Market before returning to your hotel. (B,L)

### DAY 3: SEOUL

Enjoy the day at leisure to explore the many sights and sounds of Seoul. (B)

### DAY 4: DEPART SEOUL

Transfer to the airport for your onward flight. (B)

# TAIPEI EXTENSION

4 DAYS

## TOUR TICKLIST

- ✓ Discover bustling Taipei
- ✓ Ascend Taipei 101
- ✓ Explore the National Palace Museum
- ✓ See Lungshan Temple

Prices are from per person, based on low season

| CATEGORY | TWIN SHARE | SOLE TRAVELLER |
|----------|------------|----------------|
| Standard | £490       | £850           |
| Superior | £550       | £950           |
| Deluxe   | £590       | £1,050         |

### Price includes:

- Accommodation (3 nights Taipei)
- Meals as stated (B,L,D)
- Transportation as stated
- Private touring with guides and entrance fees

Note: This extension is usually available with no additional flight costs if travelling with China Airlines.



Spend time exploring Taipei

### DAY 1: ARRIVE TAIPEI

Make your way to Taiwan's capital, Taipei, where you will be met by a driver and transferred to your hotel to check-in. Taipei is a laidback and vibrant city that, as well as being packed with the upmarket and ultramodern, is a bastion of Taiwan's wonderfully rich heritage. Its beauty lies in its blend of Chinese culture with a curious fusion of Japanese and Southeast Asian influences.

### DAY 2: TAIPEI

This morning you will be met at your Taipei hotel to commence your full-day tour. Start with a visit to the Chiang Kai-shek Memorial Hall, a monument dedicated to the former leader. Inside are various artefacts including two of his Cadillacs, documents and items

from his daily life. Take the high-speed elevator to the observation deck on the 89th floor of the Taipei 101 building for a birds-eye view of Taipei. Later, explore Lungshan Temple and then Dihua Street known for its many Chinese medicine shops. Finish the day at the National Palace Museum to admire the Chinese imperial collections before returning to your hotel. (B)

### DAY 3: TAIPEI

Enjoy the day at leisure to explore the many sights and sounds of Taipei. (B)

### DAY 4: DEPART TAIPEI

Transfer to the airport for your onward flight. (B)

# CLASSIC SOUTH KOREA

5 DAYS

## TOUR TICKLIST

- ✓ See Gyeongbok Palace
- ✓ Taste delicious Korean street food
- ✓ Explore historic Gyeongju
- ✓ Admire UNESCO Bulguksa Temple



Discover Gyeongbok Palace

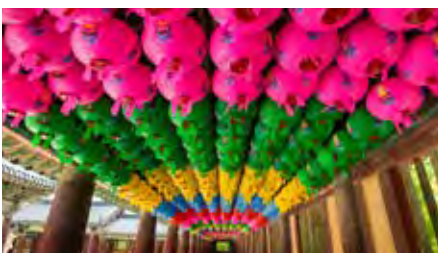
Prices are from per person, based on low season

| CATEGORY | TWIN SHARE | SOLE TRAVELLER |
|----------|------------|----------------|
| Standard | £1,390     | £2,490         |
| Superior | £1,550     | £2,690         |
| Deluxe   | £1,990     | £3,490         |

### Price includes:

- Accommodation (3 nights Seoul, 1 night Gyeongju)
- Meals as stated (B,L,D)
- Transportation as stated
- Private touring with guides and entrance fees

Note: This extension is usually available with no additional flight costs if travelling with Asiana Airlines.



Visit Bulguksa Temple



Enjoy delicious street food

## ITINERARY

### DAY 1: ARRIVE SEOUL

Arrive in South Korea's capital, Seoul, where you will be met by a driver and transferred to your hotel for check-in. This dynamic city may be well and truly on fast-forward for everything from fashion to technology, but it is still deeply rooted in tradition. Stumble upon temples and palaces amongst the glittering skyscrapers and neon billboards and enjoy Seoul's foodie credentials - the street snacks are second to none!

### DAY 2: EXPLORE SEOUL

Take a full day to explore some of Seoul's many treasures with a local guide. Start at Gyeongbok Palace, the country's most famous and beautiful royal palace, where, as well as exploring, you will see the Royal Guard Changing Ceremony. Next, visit symbolic Namsan Park and N Seoul Tower before heading to Gwangjang Market to taste some of Seoul's best street food. This evening you have the option of watching a traditional music and dance performance at Jeongdong Theatre (payable locally). (B)

### DAY 3: HISTORIC GYEONGJU

Meet your driver-guide and transfer to Seoul station. Travel on the KTX bullet train to Gyeongju. Located in the southeastern corner of North Gyeongsang Province, this city was the ancient capital of the Silla Kingdom, which ruled part of the Korean peninsula from the year 57BC to 935AD. Gyeongju is a living museum, home to a staggering amount of heritage sites, from tombs and temples to pagodas and palaces. On arrival, meet your driver and start discovering historic Gyeongju.

Head to Mount Tohamsan and the UNESCO World Heritage Bulguksa Temple and Seokguram Grotto. The temple is considered a masterpiece of Silla architecture whilst Seokguram Grotto, a hermitage, is home to some of the world's best Buddhist sculptures. There will also be time to enjoy the vistas around Bomun Lake. Stay overnight in Gyeongju. (B,L)

### DAY 4: RETURN TO SEOUL

Meet your driver-guide to further explore Gyeongju. Start at the National Museum and marvel at its collection of Silla relics. Continue to Tumuli Park with its many royal tombs before heading to the 7th-century Cheomseongdae Observatory, the oldest surviving observatory in East Asia. Finally, visit Anapji Pond. Return by bullet train to Seoul where the evening is at leisure. (B,L)

### DAY 5: DEPART SEOUL

Transfer to the airport for your onward flight. (B)



# CLASSIC TAIWAN

5 DAYS

## TOUR TICKLIST

- ✓ See bustling Taipei
- ✓ Visit Tehua aboriginal village
- ✓ Relax at Sun Moon Lake
- ✓ Uncover ancient Tainan



Visit Wen Wu Temple

Prices are from per person, based on low season

| CATEGORY | TWIN SHARE | SOLE TRAVELLER |
|----------|------------|----------------|
| Standard | £790       | £1,390         |
| Superior | £890       | £1,590         |
| Deluxe   | £990       | £1,790         |

### Price includes:

- Accommodation (2 nights Taipei, 1 night Sun Moon Lake, 1 night Tainan)
- Meals as stated (B,L,D)
- Transportation as stated
- Private touring with guides and entrance fees

Note: This extension is usually available with no additional flight costs if travelling with China Airlines.



Explore vibrant Taipei



Visit the Confucius Temple

## ITINERARY

### DAY 1: ARRIVE TAIPEI

Arrive in Taiwan's capital, Taipei, where you will be met by a driver and transferred to your hotel to check in. Taipei is a laidback and vibrant city that, as well as being packed with the upmarket and ultramodern, is a bastion of Taiwan's wonderfully rich heritage. Its beauty lies in its blend of Chinese culture with a curious fusion of Japanese and Southeast Asian influences.

### DAY 2: TAIPEI TO SUN MOON LAKE

Depart Taipei to journey into the heart of the island to what is arguably Taiwan's most scenic spot – Sun Moon Lake. At an altitude of 762 metres, this large body of fresh water is one of the island's most lovely natural vistas, popular for hiking and biking. Here, visit the impressive Wen Wu Temple adorned with red and gold features, Holy Monk Shrine, Tze-En Pagoda which offers breathtaking views over the lake and the aboriginal village of Tehua. Stay overnight at Sun Moon Lake. (B)

### DAY 3: SUN MOON LAKE TO TAINAN

Drive south to Tainan, the ancient capital of Taiwan, rich in preserved historical sites and cultural relics. Take a walking tour around Anping Fort, which was established by the Dutch East India Company in the 17th century, though what you see today is a reconstruction. Wander down some of the most historical streets in the city, catching a glimpse of the Tainan of times-gone-by. Also visit Chihkan Tower, built in 1653 by Dutch colonisers and stop at the Confucius Temple. Stay overnight in Tainan. (B)

### DAY 4: TAINAN TO TAIPEI

Travel back to Taipei by high-speed train. Stop by the CKS Memorial Hall to see the Changing of the Guards ceremony and visit the 18th-century Longshan Temple. Make a photostop at the world-famous Taipei 101. Towering above the city like the gigantic bamboo stalk it was designed to resemble, Taipei 101 is impossible to miss. Also explore the National Palace Museum, home to the world's largest and finest collection of Chinese art and artefacts including paintings, calligraphy, bronzes, lacquerware, ceramics, jade and religious objects. Enjoy the evening at leisure and perhaps visit one of the many markets on offer to experience local life in the city at night. (B)

### DAY 5: DEPART TAIPEI

Transfer to the airport for your onward flight. (B)

# HONG KONG STOPOVERS

Hong Kong boasts award-winning gastronomy, a colourful nightlife and unbeatable city views from panoramic Victoria Peak or from the deck of a sampan on the harbour. A sophisticated and lively metropolis, Hong Kong's mix of colonial influences, futuristic modernity and distinct Chinese traditions make it the ultimate East-meets-West destination.



Hong Kong Skyline

## KOWLOON HOTELS



### THE CITYVIEW ★★★★★

Located in the heart of Yau Ma Tei, The Cityview sits adjacent to bustling Nathan Road. It has a cosy Cantonese restaurant, a casual cafe and an airy Thai eatery. Offering world-class green eco standards and attentive service, The Cityview will make you feel right at home.



### EATON, KOWLOON ★★★★★

In the heart of Kowloon, close to Temple Street and the Jade Market, the Eaton's rooms are coolly contemporary with dark woods and great views. Drinks by the rooftop pool or a free Tai Chi class are perfect to unwind; and there are seven bars and restaurants to choose from.

## HONG KONG ISLAND HOTELS



### DORSETT, WAN CHAI ★★★★★

Perfectly located next to the Happy Valley Racecourse, the Dorsett offers bright and airy rooms decorated in a series of elegant themes. Just 10 minutes stroll from Causeway Bay MTR station, a free shuttle serves the most popular spots close by.



### HARBOUR GRAND KOWLOON ★★★★★

For those who like comfort and functionality with their luxury, the Harbour Grand's spacious rooms with floor to ceiling windows, some with harbour views, are perfect. The glass-walled pool, range of international restaurants and half hourly shuttles to Tsim Sha Tsui add to the appeal.



### THE LANGHAM, KOWLOON ★★★★★

Located at the heart of the Tsim Sha Tsui shopping district, the Langham exudes a timeless elegance. Boasting a three Michelin-starred restaurant, a roof top pool and luxurious accommodation, the Langham's personalised service is one of many things that will make your stay here perfect.



### HARBOUR GRAND HONG KONG ★★★★★

Harbour Grand Hong Kong is an upscale hotel ideally located at the heart of Hong Kong Island. All guestrooms feature modern décor and panoramic harbour views over the iconic Victoria Harbour. Facilities include four restaurants, a lounge, a spa and a seasonal outdoor swimming pool.

# HONG KONG GLIMPSES

**3 DAYS**

This introductory visit to Hong Kong features the highlights of this vibrant city, including a stop at Victoria Peak for panoramic harbour views and the quaint Aberdeen fishing village. Also take some time to relax and explore the city's foodie scene and shop to your heart's content in the many markets.

**DAY 1: ARRIVE HONG KONG**

Arrive in Hong Kong and take a coach transfer from the airport to your hotel. Depending on your time of arrival, the rest of the day is at leisure.

**DAY 2: HONG KONG TOUR**

Enjoy a half day seat-in-coach tour of Hong Kong Island starting with a panoramic Peak Tram ride up to Victoria Peak for fantastic views

of the harbour, towering skyscrapers and the city below. Passing the popular Repulse Bay Beach, continue to Aberdeen fishing village and enjoy an optional ride in a sampan (at your own expense). The tour ends with a visit to the buzzing Stanley Market. The rest of the day is at leisure. (B)

**DAY 3: DEPART HONG KONG**

Enjoy time at leisure before transferring to Hong Kong airport. (B)



Aberdeen Fishing Village

Prices are from per person, based on low season

| HOTEL                     | TWIN SHARE | SINGLE SUPPLEMENT |
|---------------------------|------------|-------------------|
| 3*+ The Cityview          | £290       | £140              |
| 4* Dorsett Wan Chai       | £330       | £190              |
| 4*+ Harbour Grand Kowloon | £420       | £220              |

**Price includes**

- Accommodation (2 nights Hong Kong)
- Meals as stated (B,L,D)
- Transportation as stated
- Seat-in-coach touring with guides and entrance fees

Note: This stopover is usually available with no additional flight costs if travelling with Cathay Pacific.

# HONG KONG IN FOCUS

**4 DAYS**

Designed to show you two aspects of life in the city, tour the best bits of Hong Kong Island before discovering the natural beauty of Lantau, Hong Kong's largest island. See the Grand Buddha and enjoy lunch at Po Lin Monastery, with some time to further explore as you wish.

**DAY 1: ARRIVE HONG KONG**

Arrive in Hong Kong and take a coach transfer from the airport to your hotel. Depending on your time of arrival, the rest of the day is at leisure.

**DAY 2: HONG KONG TOUR**

Enjoy a half day seat-in-coach tour of Hong Kong Island starting with a panoramic ride on the Peak Tram up to Victoria Peak for fantastic views of the harbour, towering skyscrapers and the city below. Passing the popular Repulse Bay Beach, continue to Aberdeen fishing village and enjoy an optional ride in a sampan (at your own expense). The tour ends with a visit to Stanley Market. The rest of the day is at leisure. (B)

**DAY 3: LANTAU ISLAND**

Spend today discovering Lantau Island. Transfer to Tung Chung for a stunning cable car ride up to Ngong Ping Plateau where the Grand Buddha sits majestically next to the Po Lin Monastery. After touring the Giant Buddha Exhibition Hall and the monastery, sit down for a delicious vegetarian lunch. Later, visit the historical fishing village of Tai O with its traditional stilt houses. (B,L)

**DAY 4: DEPART HONG KONG**

Enjoy time at leisure before transferring to Hong Kong airport. (B)



Grand Buddha at Lantau Island

Prices are from per person, based on low season

| HOTEL                     | TWIN SHARE | SINGLE SUPPLEMENT |
|---------------------------|------------|-------------------|
| 3*+ The Cityview          | £490       | £190              |
| 4* Dorsett Wan Chai       | £540       | £280              |
| 4*+ Harbour Grand Kowloon | £680       | £320              |

**Price includes**

- Accommodation (3 nights Hong Kong)
- Meals as stated (B,L,D)
- Transportation as stated
- Seat-in-coach touring with guides and entrance fees

Note: This stopover is usually available with no additional flight costs if travelling with Cathay Pacific.

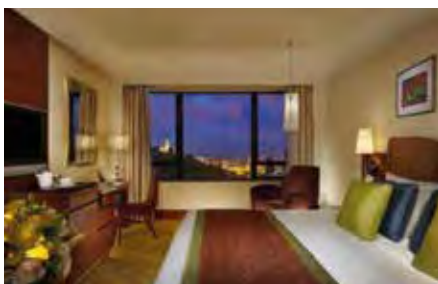
# MACAO STOPOVERS

Across the Pearl River Delta from Hong Kong, Macao boasts a blend of culture and casinos. This former Portuguese enclave, that pre-dates Hong Kong by 300 years, mixes Mediterranean style with Chinese traditions, creating a unique and fascinating atmosphere. Macao is also one of the few places in China where gambling is legal and there are plenty of glistening casinos and resorts to choose from.



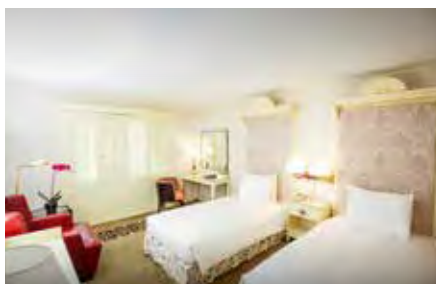
Macao skyline in the evening

## MACAO HOTELS



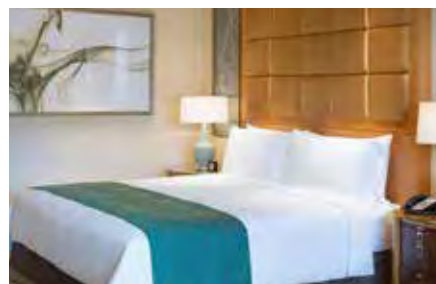
### HOTEL ROYAL MACAO ★★★★★

Situated in the heart of Macao, the newly refurbished Hotel Royal Macao is located close to many of Macao's historical buildings, including the spectacular Guia Fortress. This hotel has a Portuguese and Shanghainese restaurant, as well as an indoor heated pool.



### REGENCY ART MACAO ★★★★★

Located close to the city centre of Macau, this elegant hotel with a Mediterranean vibe offers comfortable and spacious rooms. The hotel serves international cuisine, both casual and fine dining and has an outdoor pool, spa, gym and tennis court.



### CONRAD MACAO ★★★★★

Situated on the glitzy Cotai Strip, the Conrad Macao is a world-class contemporary luxury resort, offering light and spacious accommodation. Remember to take advantage of the many restaurants specialising in Chinese, Japanese and western cuisine.



### GRAND EMPEROR ★★★

Within walking distance of the Ruins of St Paul's, the Grand Emperor Hotel boast a central location on the Macao Peninsula and offers a touch of luxury, with a dazzling gold lobby, contemporary guest rooms and a plethora of dining options.



### METROPARK HOTEL, MACAO ★★★★★

Positioned within minutes of Macao's Mediterranean-inspired Senado Square, the Metropark Hotel is located in the enviable downtown district. Equipped with swimming pool, Jacuzzi and gymnasium, this comfortable hotel has all the mod-cons.



### SOFITEL MACAO AT PONTE 16 ★★★★★

Boasting spectacular views across the Xi River, the Sofitel Macao at Ponte 16 is the pinnacle of glamour. Each room is inspired by a fusion of French and Macanese styles, furnished with MyBed mattress, LCD TV and Hermès bathroom amenities.

## TASTE OF MACAO

**3 DAYS**

From the historical to the modern and from the religious to the glitzy, Macao's rich portfolio of sights and attractions makes it an excitingly diverse destination. An intricate tapestry of Mediterranean and Chinese architecture, cuisine and cultures – a journey through Macao is like crossing two distinct countries.

### DAY 1: HONG KONG TO MACAO

Transfer independently by shuttle bus to the ferry terminal in Hong Kong for your ferry to Macao. Upon arrival take a seat-in-coach tour around the Macao Peninsula, visiting the ancient 17th-century Ruins of St Paul's Cathedral, Macao Museum and World Heritage Sites including Na Tcha Temple, St. Dominic's Church and Senado Square. After lunch, visit the observation deck of Macao Tower. Transfer to your hotel and check in. (L)

### DAY 2: MACAO

Enjoy a day at leisure. Perhaps check out the 17th century Portuguese Guia Fortress, learn about Macao Formula Three at the Grand Prix Museum, or try your luck in one of the many casinos on Cotai Strip. (B)

### DAY 3: DEPART MACAO

After breakfast, check out of your hotel and transfer independently to the Macao Pier by shuttle bus for your ferry directly to Hong Kong airport. (B)



Ruins of St Paul's Cathedral

Prices are from per person, based on low season

| HOTEL                        | TWIN SHARE | SINGLE SUPPLEMENT |
|------------------------------|------------|-------------------|
| 4* Regency Art               | £340       | £160              |
| 4*+ Hotel Royal              | £360       | £180              |
| 5* Sofitel Macao at Ponte 16 | £470       | £240              |

#### Price includes

- Accommodation (2 nights Macao)
- Meals as stated (B,L,D)
- Transportation as stated
- Seat-in-coach touring with guides and entrance fees

Note: This stopover is usually available with no additional flight costs if travelling with Cathay Pacific.

## HONG KONG & MACAO

**5 DAYS**

Combine a visit to the cosmopolitan island of Hong Kong to uncover its best bits before heading to vibrant Macao to explore its history and laidback culture. These two cities, both boasting an intriguing collision of European and Chinese influences, offer a great diversity of sights, sounds and flavours.

### DAY 1: HONG KONG

Arrive in Hong Kong and take a coach transfer from the airport to your hotel. Depending on your time of arrival, the rest of the day is at leisure.

### DAY 2: HONG KONG

Enjoy a half day seat-in-coach tour starting with a panoramic ride up the Peak Tram to Victoria Peak where you'll have fantastic views of the harbour, towering skyscrapers and the city below. Passing the popular Repulse Bay Beach, continue to Aberdeen fishing village and take an optional ride in a sampan (at your own expense). The tour ends with a visit to the buzzing Stanley Market. The rest of the day is at leisure. (B)

### DAY 3: TRAVEL TO MACAO

Transfer by coach to the ferry terminal in Hong Kong for your ferry to Macao. Upon arrival, take a seat-in-coach tour around the Macao Peninsula, visiting the ancient 17th-century Ruins of St Paul's, Macao Museum and World Heritage Sites including Na Tcha Temple, St. Dominic's Church and Senado Square. After lunch, visit the observation deck of Macao Tower. Transfer to your hotel and check in. (B,L)

### DAY 4: MACAO

Enjoy a day at leisure. (B)

### DAY 5: DEPART MACAO

After breakfast, check out of your hotel and transfer independently to the Macao Pier by shuttle bus for your ferry directly to Hong Kong airport. (B)



St Dominic's Church on Senado Square

Prices are from per person, based on low season

| HOTEL                                       | TWIN SHARE | SINGLE SUPPLEMENT |
|---|------------|-------------------|
| 4* Dorsett Wan Chai & 4* Regency Art        | £640       | £290              |
| 4*+ Harbour Grand Kowloon & 4*+ Hotel Royal | £770       | £370              |
| 5* Langham & 5* Sofitel at Ponte 16         | £990       | £570              |

#### Price includes

- Accommodation (2 nights Hong Kong & 2 nights Macao)
- Meals as stated (B,L,D)
- Transportation as stated
- Seat-in-coach touring with guides and entrance fees

Note: This stopover is usually available with no additional flight costs if travelling with Cathay Pacific.

# DUBAI STOPOVERS

Dubai is the ultimate urban destination – a city full of cutting-edge architecture, epic shopping malls, the finest of the world’s luxury hotels and a cosmopolitan nightlife, all topped off with excellent beaches. As modern and extravagant as Dubai might be there is still plenty of rich and traditional culture to be found, particularly amongst the labyrinthine alleys of the old city.



Burj Al Arab

## DUBAI HOTELS



### ZABEEL HOUSE AL SEEF ★★★★★

Zabeel House Al Seef by Jumeirah is a sleek, minimalist and modern hotel. Its enviable location in the heart of Dubai Creek means you are spoilt for choice for shops and restaurant options, and the view from the rooftop infinity pool is simply superb.



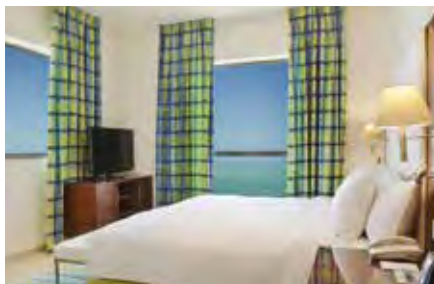
### JA OCEAN VIEW HOTEL ★★★★★

Across the road from Jumeirah Beach on lively ‘The Walk’, the JA Ocean View is comfortable and modern. All rooms have sea views from their spacious balconies, and there are seven restaurants, and a beautiful infinity pool.



### MÖVENPICK HOTEL JUMEIRAH BEACH ★★★★★

Located on ‘The Walk’, the Mövenpick is well situated for shopping and entertainment. A chic and modern property, contemporary rooms have balconies with partial or full views of the Gulf, and there is an outdoor pool and wellness centre.



### HILTON DUBAI, THE WALK ★★★★★

Located on ‘The Walk’ and close to ‘The Beach’ mall, this hotel offers modern and tasteful décor. With easy access to the beach, many rooms have views of the beachfront and some offer a kitchenette and seating area.



### AMWAJ ROTANA, JUMEIRAH BEACH ★★★★★+

The Amwaj Rotana boasts the largest guest rooms of the Jumeirah Beach Residence, each tastefully furnished and with a spacious balcony. This is the hotel for those looking for fun-filled entertainment in the evenings.



### SHERATON JUMEIRAH BEACH RESORT ★★★★★

Sit on a private beach in Dubai Marina, the Sheraton has excellent facilities, including a spa and water sports. The combination of the contemporary hotel and its expansive landscape gardens creates a modern paradise.

## ESSENTIAL DUBAI

### 3 DAYS

See a whole other side of Dubai on a stopover that includes a half day city tour that provides an insight into Dubai's rich history. Admire the incredible architecture – ultra-modern and deeply traditional, and browse through the wares of Dubai's old souks, as atmospheric today as they have been for centuries.

#### DAY 1: ARRIVE DUBAI

Upon arrival in Dubai, you will be met by your driver and transferred to your hotel. Depending on your time of arrival, the rest of the day is at leisure.

#### DAY 2: EXPLORE DUBAI

Enjoy a half day seat-in-coach tour of the city, which provides an insight into Dubai's rich history. Stop for photos at Jumeirah Mosque and the Presidential Palace, before visiting the Dubai Museum. Next, take a step

back in time and cross Dubai Creek by traditional abra (water taxi) to Deira. Wander through the vibrant spice and gold souks - where the wares here have been the same for centuries - and haggle for a bargain or two! The rest of the day is at leisure. (B)

#### DAY 3: DEPART DUBAI

Enjoy time at leisure before transferring to Dubai airport for your onward flight. (B)



Dubai Creek

Prices are from per person, based on low season

| HOTEL                             | TWIN SHARE | SINGLE SUPPLEMENT |
|-----------------------------------|------------|-------------------|
| 4* Zabeel House Al Seef           | £190       | £120              |
| 5* Movenpick Hotel Jumeirah Beach | £290       | £220              |
| 5* Sheraton Jumeirah Beach Resort | £320       | £240              |

#### Price includes

- Accommodation (2 nights Dubai)
- Meals as stated (B,L,D)
- Transportation as stated
- Seat-in-coach touring with guides and entrance fees

Note: This stopover is usually available with no additional flight costs if travelling with Emirates.

## DUBAI & THE DESERT

### 4 DAYS

See a whole other side of Dubai on a stopover that includes a half day city tour that provides an insight into Dubai's rich history. Also included is a desert safari where you spend the evening enjoying the entertainment as you feast on Arabic cuisine under the stars at a traditional Bedouin-style camp.

#### DAY 1: ARRIVE DUBAI

Upon arrival in Dubai, you will be met by your driver and transferred to your hotel. Depending on your time of arrival, the rest of the day is at leisure.

#### DAY 2: EXPLORE DUBAI

Enjoy a half day seat-in-coach tour of the city, which provides an insight into Dubai's rich history. Stop for photos at Jumeirah Mosque and the Presidential Palace, before visiting the Dubai Museum. Next, take a step back in time and cross Dubai Creek by traditional abra (water taxi) to Deira. Wander through the vibrant spice and gold souks and haggle for a bargain or two! The rest of the day is at leisure. (B)

#### DAY 3: DESERT ADVENTURE

The day is at leisure before you head out into the desert for a magical evening. View falcons at an amphitheatre before an exciting drive into the sand dunes, with a stop at the perfect spot for sunset. Stop at a Bedouin-style camp for a delicious Arabic-style buffet with unlimited drinks of selected beverages. Here, you can also try camel riding, sandboarding and have a traditional henna design drawn on your hand. (B,D)

#### DAY 4: DEPART DUBAI

Enjoy time at leisure before transferring to Dubai airport for your onward flight. (B)



Dubai Desert

Prices are from per person, based on low season

| HOTEL                             | TWIN SHARE | SINGLE SUPPLEMENT |
|-----------------------------------|------------|-------------------|
| 4* Zabeel House Al Seef           | £330       | £150              |
| 5* Movenpick Hotel Jumeirah Beach | £460       | £280              |
| 5* Sheraton Jumeirah Beach Resort | £490       | £350              |

#### Price includes

- Accommodation (3 nights Dubai)
- Meals as stated (B,L,D)
- Transportation as stated
- Seat-in-coach touring with guides and entrance fees

Note: This stopover is usually available with no additional flight costs if travelling with Emirates.

# Flying in style

At Wendy Wu Tours, we pride ourselves on the strong relationships we have with our airline partners. We can offer you not only the most convenient flights to complement your tour, but the best value too. We believe that your flights are an essential part of your holiday experience, and so our carefully selected airlines offer the utmost comfort, allowing you to arrive relaxed, refreshed and raring to go! All of our tour prices include return international economy class flights, but if you're celebrating or just fancy treating yourself, upgrading your cabin class is a great option.



Emirates Economy Class

## ECONOMY CLASS

Offering a comfortable seat, in-flight entertainment and meal service, the economy cabin varies little between airlines. You can expect to find the following:

- Legroom between 31 and 33 inches
- Personal screen with on-demand entertainment and headphones
- In-flight meals, catering for dietary requirements
- Complimentary baggage allowance



British Airways World Traveller Plus

## PREMIUM ECONOMY

Some airlines offer a Premium Economy option on their international flights. With a dedicated cabin and more spacious seating, Premium Economy offers an improved experience over Economy, but without the price tag of Business Class. Perks of Premium Economy include:

- 1-2 extra inches of seat width, 2-3 inches of extra legroom and 2-3 inches extra seat recline
- Adjustable head rests, leg rests or lumbar support
- Larger personal screens
- Premium food service
- Increased complimentary baggage allowance



Air China Business Class

## BUSINESS CLASS

Found mostly on long-haul, international routes, those who upgrade to Business Class can expect significantly more comfort and amenities than Economy and Premium Economy. You'll have:

- A dedicated check-in and Business Class lounge access
- Fast track through airport security
- Varying greatly between airlines, Business Class seats range from recliner seats to flatbed seats to 'suites'
- Large personal screens and extra viewing options
- Premium dining and wine service
- Increased cabin crew to passenger ratio
- Extra baggage allowance
- Luxury amenity kit



Cathay Pacific First Class

## FIRST CLASS

Long-haul First Class is the ultimate travel luxury, with optimum levels of comfort and service on whichever airline you choose.

You can expect:

- Dedicated check-in and fast track through airport security
- Access to exclusive First Class lounges
- A flatbed seat or 'suite' with extra space and privacy compared to Business Class
- Exclusive cabin and more specialised service
- Premium dining and wine service
- Luxury amenity kit including pyjamas

Note: Aircraft on board facilities differ between aircraft type and can be changed at short notice by the airline. When upgrading your seat, the advertised on board facilities are only guaranteed on the long-haul flight. On domestic or short-haul flights the configuration and facilities will differ to those on your long-haul flights.



# Preferred airline partners



## CATHAY PACIFIC

Cathay Pacific operates an ultra-flexible schedule, with five daily flights from London Heathrow to Hong Kong, plus daily flights from Gatwick and Manchester. One of our most popular airlines, you can expect excellent in-flight service from this five-star rated airline. You also have the perfect opportunity to stopover in Hong Kong, Cathay's hub city.



A STAR ALLIANCE MEMBER 

## AIR CHINA

Offering frequent and flexible flight connections to Japan via China from London Heathrow and several UK regional airports, Air China is a convenient and comfortable choice for travellers to Tokyo or Osaka. Its fully flat-bed Business Class seats offer some of the best value available.



## BRITISH AIRWAYS

Wendy Wu Tours is delighted to be a British Airways preferred partner, which means we can offer you its most competitive fares. You can fly direct from London Heathrow to Tokyo or Osaka, with a wide range of connecting regional flights from all over the UK.



## EMIRATES

With Emirates you can fly to Japan via Dubai, connecting from a range of UK airports including Birmingham, Glasgow, Manchester and Newcastle, as well as Heathrow, Gatwick and Stansted. Exceptional in-flight service, a more generous seat pitch and the chance to stopover in Dubai all make Emirates a popular choice for our customers to Japan.

Other airline partners to Japan include: KLM, Finnair, Qatar Airways, Asiana Airlines & China Airlines.

# Your Japan questions answered

A selection of our most frequently asked questions.

## BEFORE YOU TRAVEL



**Q. How soon after making our booking will we receive confirmation?**

**A.** Once we have received your deposit we will send your confirmation documents.

**Q. Do you send us information about the destinations we will visit?**

**A.** It is essential that you read the relevant tour dossier before booking, which you can find on [wendywutours.co.uk](http://wendywutours.co.uk), or we can arrange for one to be sent to you. If there are any particular challenges such as the length of time spent on your feet, journey times or accommodation standards, they will be explained in these concise trip notes. Two weeks before you travel, you will receive a detailed day-by-day itinerary and a travel guide, as well as a phrasebook with your final documents.

**Q. Will I know which hotels I will be staying in before I go?**

**A.** Hotel details will be sent with your final documents. Note that these may be subject to change. Hotels generally range from 3-4 stars. In more remote areas, accommodation may be of a lower standard and may not have all western amenities. On our Trails of Japan tour, in order to immerse you further into the culture, we have included one night at a ryokan, a traditional Japanese Inn with onsen facilities as well as one night at a 13th-century temple, which involves sleeping on a traditional futon on a tatami mat floor. Rest assured that all hotels used by Wendy Wu Tours are regularly inspected by our staff and our partners to ensure that standards meet

your needs. If you require an early check-in or late check-out on your arrival or departure day, please contact us.

**Q. Do I need a visa?**

**A.** Visas are currently not required for Japan for holders of UK British Citizen passports.

**Q. Do I need travel insurance?**

**A.** Your protection and safety are our main priority. That's why having adequate travel insurance is a condition of booking with us for all the destinations you plan to travel to.

**Q. What size are your tour groups?**

**A.** The group size varies depending on the tour, but is usually between 8 and 28 passengers. You may meet other tour groups travelling concurrently. Where available, on our group tours we operate a seat-and-a-half policy, allowing you to travel in comfort.

**Q. Do you run guaranteed departures?**

**A.** Group tours are guaranteed to run subject to a minimum of 8 passengers. A National Escort will accompany each group of 10 or more. We will endeavour to run groups of a smaller size if viable to do so.

**Q. What vaccinations do I need?**

**A.** We recommend you see your doctor at least six weeks prior to travel for advice and to allow time for any necessary vaccinations. Please remember to take your itinerary with you.

**Q. As a single traveller, will I have to pay a single supplement?**

**A.** On our Japan tours we offer the option to share a twin room with another solo traveller of the same gender who is also willing to share. We will add the single supplement cost to your invoice at time of booking. However if at 12 weeks before your departure you are matched to share with someone then we will remove the single supplement from the invoice. Alternatively if you book our 'Highlights of Japan' tour, which is exclusive to solo travellers, there is no single supplement to pay as the holiday price includes sole use of a single room throughout.

**Q. What is the maximum luggage allowance on your tours?**

**A.** Your main suitcase or backpack must not exceed 20kg and your hand luggage must not exceed 5kg.

**Q. Is portage included?**

**A.** No, portage is not included on our tours and you will be expected to carry your own luggage. This will apply during transfers and at hotels.

**Q. What currency should I take?**

**A.** We recommend you take the local currency Yen and a credit/debit card. We do not recommend travellers cheques. Please ensure you have sufficient funds to pay for personal expenses such as drinks, snacks, souvenirs and optional extras.

**Q. When is the best time to visit Japan?**

**A.** Japan is a year-round destination. While spring and autumn are the most popular months to visit, many people enjoy tours at other times of the year when there are fewer tourists. See pages 14-15. Many people travel to Japan in cherry blossom season. Please bear in mind that seeing the cherry blossoms cannot be guaranteed as the season can vary from year to year. Very roughly the season for Tokyo and Kyoto is from the last week of March to the first two weeks of April – further south it begins earlier, further north it's a bit later. This is a very popular time of the year to visit so expect tourist attractions to be busy and that some queuing may be required.

**Q. When are Japanese public holidays?**

**A.** Japan's 'Golden Week' public holidays fall annually at the end of April/beginning of May. Celebrations last for several days and during this time some businesses will be closed. Tour attractions will be open, but may be crowded.

## WHILE ON TOUR

### Q. What does escorted touring mean?

**A.** Every group tour which has 10 or more passengers travelling will be accompanied by a National Escort from when you arrive, to when you depart. On multi-country tours, different national escorts are used in each country. In the unlikely event that your group is less than 10 you will be accompanied by local guides in each location. Our optional extensions are not accompanied by a National Escort; however you will have the benefit of our knowledgeable local guides. Transfers and flights to and from optional extension destinations are not escorted. Private tours are not accompanied by a National Escort, but will be accompanied by knowledgeable local guides in each location.

### Q. What sort of vehicles do you use?

**Air:** Internal flights are based on economy class, with reputable airlines.

**Road:** Coaches with air conditioning are used on our group tours for city sightseeing, short excursions to the countryside and longer transfers where necessary. On our private tours, we use air-conditioned vehicles suitable for the size of the party.

**Rail:** Bullet trains and high speed trains are used on some tours. There is limited space to store luggage but alternative options are available, such as a luggage transfer service (at your own expense on private tours). While our guides may be there to assist, you will need to load and unload your own luggage on and off the trains. Seats onboard are comfortable, and carriages have western-style facilities.

**River:** Ships or boats are used on tours which have a cruising element. To undertake these excursions, you will need to be capable of boarding and disembarking from these boats, sometimes without assistance and/or handrails.

**Public Transport:** In big cities such as Tokyo, it may be necessary to make use of the excellent public transport systems during your sightseeing excursions. As well as being quicker and more convenient, it gives you a far more local experience. Escorted travel on public transport is mainly used on private tours.

### Q. How do airport transfers work in Japan?

**A.** Airport transfers work in a different way in Japan compared to our other destinations. Unless there are 8 or more passengers arriving/departing at the same time, all passengers will be transferred to/from the airport using shared public transport via an airport limousine bus, monorail or coach-then taxi. You will be met at the airport by an English-speaking representative and guided to your mode of transport.

### Q. Is there a dress code on your tours?

**A.** Our dress code is very relaxed; however, please note that clothing covering the arms and legs is more appropriate when visiting religious buildings.

### Q. Are meals included?

**A.** All meals (excluding beverages) are included in our Classic Tours except where stated. Meals included on Solo and Go Beyond tours, are stated in the brochure and include several free evenings, offering flexibility for those who wish to explore local restaurants. Meals on our Classic group tours start with dinner on the normal day of arrival and finish with breakfast on the normal day of departure. Any additional meals will be at your own expense and no refund will be made for any meals missed. You will sample a range of local cuisine with occasional western meals, and meals are usually taken at local restaurants.

### Q. Is tap water safe to drink?

**A.** The tap water across Japan is safe to drink, though you may prefer bottled water as you may not appreciate the taste.

### Q. Are there any optional excursions?

**A.** From time to time your National Escort or local guide may suggest optional sightseeing in addition to the standard sightseeing planned, depending on local conditions. Such options are at an additional cost, with prices usually starting at £30 per person. This is paid in cash (local currency) to the guide on the day of the optional excursion – just ask your guide if you need to visit a cash machine before touring for that day commences.

### Q. Are there shopping opportunities on your tours?

**A.** Japan has an array of shopping opportunities for those who love to seek out a bargain. We encourage all passengers to enjoy their local shopping expeditions but to take care and be wise when purchasing.

### Q. Can special requests be arranged?

**A.** If you have any special requests such as dietary requirements, or if you wish to celebrate an event, please notify us at the time of booking and we will do everything possible to ensure your requests are met. Please note that special requests cannot be guaranteed.

### Q. What is the flying time to Japan?

**A.** Approx. 11.5 hours (if flying direct).

### Q. Do you allow children on your tours?

**A.** We allow children 12 years and over on our group tours. Alternatively, our Private Tours (see our website) offer greater flexibility whilst on tour and are suitable for any age group.

### Q. Will I be travelling with passengers from other countries?

**A.** Our passengers generally enjoy the mixture of British and Australian clients on tour. Occasionally we are joined by English speaking passengers from other countries.

### Q. What is the average age on your group tours?

**A.** The average age range is 40-65. Younger and older passengers travel with us too.

### Q. What hours of the day do your tours operate?

**A.** They generally start about 8am and end shortly after your evening meal. Occasionally earlier starts are required to meet touring requirements.

### Q. Is tipping compulsory?

**A.** Tipping is not part of the culture in Japan and therefore is not required during our tours in Japan, but if you would like to show your appreciation, you can do so in local currency.

## Health & Safety

The enjoyment of your holiday is our highest priority. Wendy Wu Tours is a fully insured and bonded tour operator with comprehensive public liability cover. Working closely with an independent health and safety organisation, we are proactive in our approach by ensuring that hotels used on our group tours regularly undergo comprehensive fire safety, security and hygiene audits. In the unlikely event of a problem or emergency on tour, Wendy Wu Tours has a Crisis Management process in place to support all of our customers. We also have a dedicated 24 hour emergency support number.



For information about South Korea, Taiwan and China, please visit our website and view each tour's detailed tour dossier.

# Booking your trip

We want to make it as straightforward as possible to book your Wendy Wu holiday. It should be as simple as 1–2–3.

## 1. Choose your tour

Select from this brochure or browse our website to see our full range of award-winning tours and choose the style of travel that suits you. You will also find detailed information in our tour dossiers to make sure the tour is appropriate for you.

## 2. Speak to an expert

Get in touch with one of our expert travel consultants who will be able to answer any of your questions, check availability instantly and confirm prices.

## 3. Make a booking

Did you know you can book most of our tours on our website? Otherwise give us a call or visit your preferred travel agent to pay a deposit and secure your booking from £350pp. Final payment is usually due 75 days before departure.



# Your loyalty matters

Many of our customers enjoy the Wendy Wu Tours experience so much that they travel with us again and again and are happy to recommend us to their friends and family.

### BECOME A WENDY WU TOURS VIP

Our Wendy Wu VIP loyalty scheme will get you exclusive offers and updates before anyone else plus you'll move up membership levels with every new trip you book – which means bigger savings!

#### Bronze VIP

£100 per person discount  
When you book your  
2nd Wendy Wu holiday



#### Silver VIP

£150 per person discount  
When you book your  
3rd Wendy Wu holiday



#### Gold VIP

£200 per person discount  
When you book your 4th  
or more Wendy Wu holiday



### RECOMMEND A FRIEND

We'll send you a gourmet hamper as a thank you for the first booking we receive. Plus for every subsequent booking, we'll send you £50 worth of shopping vouchers.



Terms and conditions apply. Refer to our website for full details.

## WENDY WU TOURS BOOKING CONDITIONS

The following booking conditions form the basis of your contract with Wendy Wu Tours Ltd, Ground Floor, Cottons Centre, Cottons Lane, 47-49 Tooley St, London SE1 2QG, company number 05107061. Please read them carefully as they set out our respective rights and obligations. By asking us to confirm your booking, you confirm that you have had the opportunity to read and have read these booking conditions, the brochure and tour dossier and agree to be bound by them.

The following booking conditions form the basis of your contract with Wendy Wu Tours Ltd, Ground Floor, Cottons Centre, Cottons Lane, 47-49 Tooley St, London SE1 2QG, company number 05107061.

Please read them carefully as they set out our respective rights and obligations. By asking us to confirm your booking, you confirm that you have had the opportunity to read and have read these booking conditions, the brochure and tour dossier and agree to be bound by them.

These booking conditions only apply to holiday arrangements which you book with us in the UK and which we agree to make, provide or perform (as applicable) as part of our contract with you. All references in these booking conditions to "holiday", "booking", "contract", "package", "tour" or "arrangements" mean such holiday arrangements unless otherwise stated. For tailor-made holidays, please refer to our Wendy Wu Tailor Made brochure and terms and conditions, or visit our website. In these booking conditions, "you" and "your" means all persons named on the booking (including anyone who is added or substituted at a later date) or any of them as the context requires. "We", "us" and "our" means Wendy Wu Tours Limited.

### 1. Your Holiday Contract

The first named person on the booking ("lead name") must be authorised to make a booking on the basis of these booking conditions by all persons named on the booking and by their parent or guardian for all party members who are under 18 when the booking is made. By making a booking the lead name confirms that he/she is so authorised. The lead name is responsible for making all payments due to us and to indemnify us for the liability of all party members. The lead name must be at least 18 when the booking is made. After we receive your booking request and all appropriate payments (see clause 4 "Payment" below), if the arrangements you wish to book are available, we will issue a confirmation invoice. A binding agreement will come into existence between us when we email your confirmation invoice to the 'lead name' or your Travel Agent. Your invoice will be sent to your travel agent or the lead name on the booking if you have booked direct with us. Please check this invoice carefully as soon as you receive it. Contact us immediately if any information which appears on the confirmation or any other document appears to be incorrect or incomplete as it may not be possible to make changes later. We regret we cannot accept any liability if we are not notified of any inaccuracies (for which we are responsible) in any document within ten days of our sending it out (five days for tickets). We will do our best to rectify any mistake notified to us outside these time limits but you must meet any costs involved in doing so. If you wish to change or cancel any arrangements later you may have to pay an amendment or cancellation charge (See clause 8).

We both agree that English Law (and no other) will apply to your contract and to any dispute, claim or other matter of any description which arises between us ("claim") (except as set out below). We both also agree that any claim (and whether or not involving any personal injury) must be dealt with under the ABTA arbitration scheme (if the scheme is available for the claim in question and you wish to use it – see clause 13) or by the Courts of England and Wales only unless, in the case of Court proceedings, you live in Scotland or Northern Ireland. In this case, proceedings can either be brought in the Courts of your home country or those of England and Wales. If proceedings are brought in Scotland or Northern Ireland, you may choose to have your contract and claim governed by the law of Scotland/Northern Ireland as applicable (but if you do not so choose, English law will apply).

### 2. Your financial protection

We provide full financial protection for our package holidays.

For flight-based holidays this is through our Air Travel Organiser's Licence (ATOL number 6639) issued by the Civil Aviation Authority, Gatwick Airport South, West Sussex, RH6 0YR, UK, telephone 0333 103 6350, email [claims@caa.co.uk](mailto:claims@caa.co.uk). When you buy an ATOL protected flight or flight inclusive package\* from us, you will receive an ATOL Certificate. This lists what is financially protected, where you can get information on what this means for you, and who to contact if things go wrong. We, or the suppliers identified on your ATOL Certificate, will provide you with the services listed on the ATOL Certificate (or a suitable alternative). In some cases, where neither we nor the supplier are able to do so for reasons of insolvency, an alternative ATOL holder may provide you with services you have bought or a suitable alternative (at no extra cost to you). You agree to accept that in those circumstances the alternative ATOL holder will perform those obligations and you agree to pay any money outstanding to be paid by

you under your contract to that alternative ATOL holder. However, you also agree that in some cases it will not be possible to appoint an alternative ATOL holder, in which case you will be entitled to make a claim under the ATOL scheme (or your credit card issuer where applicable).

If we, or the suppliers identified on your ATOL certificate, are unable to provide the services listed (or a suitable alternative, through an alternative ATOL holder or otherwise) for reasons of insolvency, the Trustees of the Air Travel Trust may make a payment to (or confer a benefit on) you under the ATOL scheme. You agree that in return for such a payment or benefit you assign absolutely to those Trustees any claims which you have or may have arising out of or relating to the non-provision of the services, including any claim against us, the travel agent (or your credit card issuer where applicable). You also agree that any such claims may be re-assigned to another body, if that other body has paid sums you have claimed under the ATOL scheme.

\*The flights and flight-inclusive packages we arrange are ATOL protected providing they are made available in the UK. For further information visit the ATOL website at [www.atol.org.uk](http://www.atol.org.uk).

We are a member of ABTA (ABTA number W7994). If your package holiday does not include a flight, protection is provided by way of a bond held by ABTA The Travel Association 30 Park Street London SE1 9EQ [www.abta.co.uk](http://www.abta.co.uk).

The combination of travel services offered to you is a package within the meaning of the Package Travel and Linked Travel Arrangements Regulations 2018. Therefore, you will benefit from all EU rights applying to packages. We will be fully responsible for the proper performance of the package as a whole. Additionally, as required by law, we have protection in place to refund your payments and, where transport is included in the package, to ensure your repatriation in the event that we become insolvent. More information on key rights can be found by visiting <https://www.legislation.gov.uk/ukdsi/2018/9780111168479/contents>.

### 3. Your Holiday Price

Please note, changes and errors occasionally occur. You must check the price of your chosen holiday at the time of booking. The cost of your travel arrangements was calculated using known costs and exchange rates of £1 to 146JPY, £1 to 8.80CNY and £1 to 1.31USD on 03 May 2019. We reserve the right to increase and correct errors in advertised prices at any time before your holiday is confirmed. We will advise you of any error which we are aware of and inform the new applicable price at the time of booking. Once the price of your chosen holiday has been confirmed at the time of booking, it will not be subject to change.

### 4. Payment

In order to confirm your chosen holiday, a non-refundable deposit of at least £350.00 per person (or full payment if booking within 75 days of departure) must be paid at the time of booking. In some cases the amount of deposit may be higher: where, for example, we need to pre-purchase flights tickets, accommodation or other services and in the case of our flight upgrade special offers, to which early airline ticketing may apply – please see the terms and conditions of individual special offers for further information. The balance of the holiday cost must be received by us not less than 60 days prior to departure. This date will be shown on the confirmation invoice. Reminders are not sent. Our preferred method of deposit payment is by bank debit card or credit card. Balance payment may be made by bank debit card, credit card or cheque (providing there is time to clear it to meet the payment schedule shown above - you should allow 5 working days for clearance from the time we receive it). If we do not receive all payments due in full and on time, we are entitled to assume that you wish to cancel your booking. In this case, we will be entitled to keep all deposits paid or due at that date. Except for flight inclusive bookings, all monies you pay to one of our authorised travel agents for your holiday with us will be held by the agent on your behalf until a contract between us comes into existence. After that point, your agent will hold the monies on our behalf until they are paid to us. For flight inclusive bookings, all monies paid to any authorised travel agent of ours for your holiday with us will be held on behalf of and for the benefit of the Trustees of the Air Travel Trust subject to the travel agent's obligation to pay such monies to us in accordance with our trading terms unless we fail. In the unlikely event of our financial failure, all monies then held by the travel agent or subsequently paid by you to the travel agent will be held by the agent on behalf of and for the benefit of the Trustees of the Air Travel Trust without any obligation on the agent to pay such monies to us.

Please note that on very rare occasions, errors may occur when inputting prices onto our website and systems. We regret that any contract entered into on the basis of a pricing error will be invalid. In the unlikely event that this situation arises, you will be given the option to pay the correct price or cancel with a full refund.

### 5. Travel documents and visas

A Passport with a minimum of six months validity from the intended date of travel, and contains a minimum of two blank pages, is required for travel for the majority of countries in our programme. As visa requirements are constantly changing, you must regularly check the Foreign & Commonwealth Office (FCO) website for the most up to date entry requirements. Visa fees, where required, are included for UK British Citizen passport holders and will be specified whether included on your confirmation invoice. If you hold any other British passport (British Subject, British National Overseas) or you are a non-UK passport holder or you reside outside of the UK, you will be required to obtain your own visas at your own expense. It is your responsibility to ensure the visa issued to you is correct. Whilst we include the cost of the standard visa application service in your tour price (for UK British Citizen passport holders), we will pass on any additional charges incurred for non-standard visa processing, or where visa charges are increased following publication of the brochure. Should your visa application be refused for any reason and you wish to cancel your booking the cancellation charges under clause 8 will apply. An express visa process is available for an additional cost depending on the country of visit. We make no promises that your Visa application will be successful and we cannot accept bookings conditional on the issuing of a visa, or payment of the balance of the holiday cost (see clause 4) to be deferred until visas have been issued. Responsibility for documentation accuracy, passport validity and dispatch of documents rests with you. Wendy Wu Tours accepts no responsibility in this regard. We accept no responsibility for passports lost in the post. It is the responsibility of each passenger to ensure that you carry all necessary passport, visa and other travel documentation as required by the country you are visiting, and that all documents are in date and valid. We do not accept responsibility if you cannot travel because you have not complied with any passport, visa or immigration requirements for any part of your holiday. Failure to have any necessary travel or other documents results in fines, surcharges or other financial penalty being imposed on us, you will be responsible for reimbursing us in full. For the most up to date information on visa requirements for all destinations that we feature, please visit our website <https://www.wendywutours.co.uk/help-and-advice/passports-and-visas/>.

### 6. Travel Insurance, Health and Safety

It is a condition of booking with us that you take out suitable travel insurance covering at least circumstances leading to the cancellation of your booking and providing sufficient medical cover for illness or injury and repatriation while overseas. You must provide us with the name of your insurers and their 24 hour emergency contact number when you book or as soon as possible thereafter. Wendy Wu Tours will not be liable for any costs incurred by you due to your failure to take out suitable travel insurance from the date of booking. You will indemnify Wendy Wu Tours in respect of any assistance or payment made by us in these circumstances. Details of any compulsory health requirements applicable to British citizens for your holiday are available from the websites listed below. It is your responsibility to ensure you are aware of all recommended vaccinations and health precautions in good time before departure. Details are available from your GP surgery and from the National Travel Health Network and Centre [www.nathnac.org](http://www.nathnac.org). Information on health can be found at [www.nhs.uk](http://www.nhs.uk) and [www.fitfortravel.nhs.uk](http://www.fitfortravel.nhs.uk). Health requirements and recommendations may change and you must check the up to date position in good time before departure. The Foreign and Commonwealth Office publishes regularly updated travel information on its website [www.gov.uk/foreign-travel-advice](http://www.gov.uk/foreign-travel-advice) which you are recommended to consult before booking and in good time before departure.

### 7. If you wish to change your booking

If, after our confirmation invoice has been issued, you wish to change your travel arrangements in any way, we will endeavour to make these changes, but it may not always be possible. Any request for changes to be made must be from the lead name on the booking or your Travel Agent. You will be asked to pay an administration charge as set out below per person and any further cost we incur together with any costs or charges incurred or imposed by any of our suppliers in making this alteration. Examples include:

- Minor amendments to the tour booked OR Minor amendments made within 30 days of departure OR Transferring between tours or changing departure date - £50
- Transferring between tours or changing departure date within 60 days of departure is not permitted and cancellation fees will apply

## BOOKING CONDITIONS

- Reissue of airline tickets, where possible - £50 plus any non-refundable costs of the cancelled ticket and any additional costs of the new ticket

You can transfer your booking to another person, who satisfies all the conditions that apply to your booking, by giving us notice in writing as soon as possible and no later than 7 days before departure. Both you and the new traveller are responsible for paying all costs we incur in making the transfer.

Once a booking is confirmed no changes are permitted otherwise than in accordance with these terms and conditions.

It is important to note that some arrangements such as certain types of air tickets cannot be changed after a booking has been made as they are sold as part of your fixed package. You will be advised of any such non refundable charges prior to confirming your booking. Any change will be treated as a cancellation in which case cancellation charges will apply. Note that only one change per booking is permitted. Any requests for changes to your booking must be emailed to [operations@wendywutours.co.uk](mailto:operations@wendywutours.co.uk).

### 8. If you wish to cancel your booking

Because we start to incur costs in relation to your arrangements from the time we confirm your booking, if you cancel we have to make a charge and the nearer to your departure date you cancel, the higher the charge will be. If you wish to cancel a confirmed booking you must do so by writing to our head office. Cancellation takes effect from the day we receive your letter. Cancellation charges are shown in the table below and will be payable immediately on cancellation. Where the cancellation charge is shown as a percentage, this is calculated on the basis of the total cost payable by the person(s) cancelling excluding insurance premiums and amendment charges. Insurance premiums and amendment charges are not refundable in the event of cancellation:

|                 |                        |
|-----------------|------------------------|
| 75 or more days | Retention of deposit   |
| 74 – 42 days    | 30% including deposit  |
| 41 – 28 days    | 60% including deposit  |
| 27 – 15 days    | 90% including deposit  |
| 14 days or less | 100% including deposit |

Depending on the reason for cancellation, you may be able to reclaim these cancellation charges (less any applicable excess) under the terms of your insurance policy. Claims must be made directly to the insurance company concerned and we have no liability in these circumstances.

### 9. If we change or cancel your holiday

Occasionally, we have to make changes to and correct errors in brochure and other details both before and after bookings have been confirmed and cancel confirmed bookings. Whilst we always endeavour to avoid changes and cancellations, we must reserve the right to do so. The right is also reserved to any change in airline, aircraft types and vessels scheduled for any specific departure.

#### If we change your holiday

Even after we have confirmed your booking we may have to make alterations to confirmed arrangements. Most such alterations will be minor and of little effect on your overall arrangements and while we will do our best to notify you of any such minor change before your departure, we will have no other liability to you. Occasionally we may have to make a significant change to your confirmed arrangements. Significant changes include but are not limited to the following (which are illustrative):

- Change of UK departure airport. (A change from one London airport to another is not considered a major change. London airports are Heathrow, Gatwick, Stansted, Luton and London City)
- Change of your time of departure or return by more than 12 hours
- Change of resort
- Change of holiday accommodation to accommodation of a lower official rating.

If we have to make a significant change, we will notify you as quickly as possible and offer you the following options:

- (a) (for significant changes) accepting the changed arrangements or
- (b) purchasing an alternative holiday from us, of a similar standard to that originally booked if available. We will offer you at least one alternative holiday of equivalent or higher standard for which you will not be asked to pay any more than the price of the original holiday. If the holiday is cheaper than the original one, we will refund the price difference. If you do not wish to accept the holiday we specifically offer you, you may choose any of our other available holidays. You must pay the applicable price of any such holiday. This will mean you paying more if it is more expensive or receiving a refund if it is cheaper or
- (c) cancelling or accepting the cancellation in which case you will

receive a full refund of all monies you have paid to us.

In addition, if you choose (a) or (b) above, and the change is not due to 'unavoidable and extraordinary circumstances' (see below), you will receive as compensation a credit towards the cost of your arrangements, or any alternative selected, of the amount shown in Scale A below. If you choose (c) we will pay you compensation of the amount shown in Scale B below. In all cases we will have no liability for any other or greater compensation, or for expenses or losses incurred as a result of any change.

| Period before departure date notification given by us | Compensation per fare paying passenger (excluding children) |
|---|---|
| 0 – 7 days  | £50   |
| 8 – 14 days   | £40   |
| 15 – 28 days  | £30   |
| 29 – 42 days  | £20   |
| 43 – 75 days  | £10   |

#### If we cancel your holiday

If we have to cancel your booking we will not cancel less than 60 days before your departure date, except for unavoidable and extraordinary circumstances, or failure by you to pay the final balance, or because the minimum number required for the package to go ahead hasn't been reached. Unavoidable and extraordinary circumstances means a situation beyond our control, the consequences of which could not have been avoided even if all reasonable measures had been taken. The minimum number required will be provided to you with the holiday description, along with the time limit for us to tell you if the package has to be cancelled. If your holiday is cancelled you can either have a refund of all monies paid or accept an alternative holiday of comparable standard from us if we offer one (we will refund any price difference if the alternative is of a lower value).

No compensation will be payable and the above options for either a change or cancellation will not be available if we cancel as a result of your failure to comply with any requirement of these booking conditions entitling us to cancel (such as paying on time) or where a change is a minor one.

Please note, in the event of a cancellation, airline schedule change or change of departure airport, we are not liable to cover the cost of flights, trains or any form of transportation or any other expenses incurred by these changes.

### 10. Our liability to you

(1) We will take reasonable care to ensure that the holiday arrangements we have agreed to make, perform or provide as part of our contract with you are made, performed or provided with reasonable skill and care. This means that, subject to these booking conditions, we may accept responsibility if, for example, you suffer death or personal injury or your contracted holiday arrangements are not provided as promised or prove deficient as a result solely of the failure of ourselves, our employees, agents or suppliers to use reasonable skill and care in making, performing or providing, as applicable, your contracted holiday arrangements. Please note, it is your responsibility to show that reasonable skill and care has not been used and you have suffered loss as a result if you wish to make a claim against us. In addition, we will only be responsible for what our employees, agents and suppliers do or do not do if they were at the time acting within the course of their employment (for employees) or carrying out work we had asked them to do (for agents and suppliers).

(2) We will not be responsible for any injury, illness, death, loss (for example loss of enjoyment), damage, expense, cost or other sum or claim of any description whatsoever which results from any of the following:

- the act(s) and/or omission(s) of the person(s) affected or any member(s) of their party or
- the act(s) and/or omission(s) of a third party not connected with the provision of your holiday and which were unforeseeable or unavoidable or
- 'Unavoidable and Extraordinary Circumstances' as defined in clause 9 above.

(3) Please note, we cannot accept responsibility for any services which do not form part of our contract. This includes, for example, any additional services or facilities which your hotel or any other supplier agrees to provide for you where the services or facilities are not advertised by us and we have not agreed to arrange them as part of our contract including any excursion you purchase in resort. Please also see clause 11 "Excursions". In addition, regardless of any wording used by us on our website, in any advertising material or elsewhere, we only promise to use reasonable skill and care in performing our contractual obligation as set out above and we do not have any greater or different liability to you.

(4) The promises we make to you about the services we have agreed to provide or arrange as part of our contract - and the laws, regulations and relevant standards of the country in which your claim or complaint occurred - will be used as the basis for deciding whether the services in question had been properly provided. If the particular services which gave rise to the claim or complaint complied with local laws and regulations applicable to those services at the time, the services will be treated as having been properly provided. This will be the case even if the services did not comply with the laws and regulations of the UK which would have applied had those services been provided in the UK. The exception to this is where the claim or complaint concerns the absence of a safety feature which might lead a reasonable holiday maker to refuse to take the holiday in question. Please note, however, our obligation is to exercise reasonable skill and care as referred to in clause 10 (1). We do not make any representation or commitment that all services will comply with applicable local laws and regulations and failure to comply does not automatically mean we have not exercised reasonable skill and care.

(5) As set out in these booking conditions, we limit the maximum amount we may have to pay you for any claims you may make against us. Where we are found liable for loss of and/or damage to any luggage or personal possessions (including money), the maximum amount we will have to pay you is £1,500 per person affected unless a different limitation applies to your claim under this clause or clause 10(6) below. You must ensure you have appropriate travel insurance to protect your personal belongings. For all other claims which do not involve death or personal injury, if we are found liable to you on any basis the maximum amount we will have to pay you is three times the price (excluding insurance premiums and amendment charges) paid by or on behalf of the person(s) affected in total unless a lower limitation applies to your claim under clause 10(6) below. This maximum amount will only be payable where everything has gone wrong and you have not received any benefit at all from your holiday.

(6) Where any claim or part of a claim (including those involving death or personal injury) concerns or is based on any travel arrangements (including the process of getting on and/ or off the transport concerned) provided by any air, sea, rail or road carrier to which any international convention or regulation applies, the maximum amount of compensation we will have to pay you will be limited. The most we will have to pay you for that claim or that part of a claim if we are found liable to you on any basis is the most the carrier concerned would have to pay under the international convention or regulation which applies to the travel arrangements in question (for example, the Warsaw Convention as amended or unamended and the Montreal Convention for international travel by air and/or for airlines with an operating licence granted by an EU country, the EC Regulation on Air Carrier Liability No 889/2002 for national and international travel by air, the Athens Convention for international travel by sea and COTIF, the Convention on International Travel by Rail). Where a carrier would not be obliged to make any payment to you under the applicable international convention or regulation in respect of a claim or part of a claim, we similarly are not obliged to make a payment to you for that claim or part of the claim. When making any payment, we are entitled to deduct any money which you have received or are entitled to receive from the carrier for the claim in question. Copies of the applicable international conventions and regulations are available from us on request.

(7) Please note, we cannot accept any liability for any damage, loss, expense or other sum(s) of any description (1) which on the basis of the information given to us by you concerning your booking prior to our accepting it, we could not have foreseen you would suffer or incur if we breached our contract with you or (2) which did not result from any breach of contract or other fault by ourselves or our employees or, where we are responsible for them, our suppliers. Additionally we cannot accept liability for any business losses including self employed loss of earnings.

### 11. Excursions

We may provide you with information (before departure and/or when you are on holiday) about activities and excursions which are available in the area you are visiting. We have no involvement in any such activities or excursions which are neither run, supervised nor controlled in any way by us. They are provided by local operators or other third parties who are entirely independent of us. They do not form any part of your contract with us even where we suggest particular operators/other third parties and/or assist you in booking such activities or excursions in any way. We cannot accept any liability on any basis in relation to such activities or excursions and the

acceptance of liability contained in clause 10(1) of our booking conditions will not apply to them. We do not however exclude liability for the negligence of ourselves or our employees resulting in your death or personal injury. We cannot guarantee accuracy at all times of information given in relation to such activities or excursions or about the area you are visiting generally or that any particular excursion or activity which does not form part of our contract will take place as these services are not under our control. If you feel that any of the activities or excursions referred to in our brochure, on our website and in our other advertising material which are not part of our contract are vital to the enjoyment of your holiday, write to us immediately and we will tell you the latest known situation. If we become aware of any material alterations to area information and/or such outside activities or excursions which can reasonably be expected to affect your decision to book a holiday with us, we will pass on this information at the time of booking.

#### 12. Complaint procedure

If you have a problem during your holiday concerning any service provided as part of the arrangements we have confirmed, you must inform our National Escort or Local Guide (or, if none available, with our local agent or hotel manager) immediately to enable them to try to resolve the matter. Any notification must be put in writing and given to our representative / agent and the supplier as soon as possible. Our emergency number is manned 24 hours a day, seven days a week and is 01888 288 288. Until we know about a complaint or problem, we cannot begin to resolve it. If you remain dissatisfied, however, you must write to us within 28 days of your return to the UK giving your booking reference and full details of your complaint. Please address all correspondence to [customer@wendywutours.co.uk](mailto:customer@wendywutours.co.uk). Only the lead name should write to us. If you fail to follow this simple complaints procedure, your right to claim any compensation you may otherwise have been entitled to may be affected or even lost as a result.

#### 13. Arbitration

As ABTA members, we are obliged to maintain a high standard of service to you by ABTA's Code of Conduct. Disputes arising out of, or in connection with your booking which cannot be amicably settled may be referred to arbitration if you so wish under a special scheme arranged by ABTA Ltd and administered independently. The scheme provides for a simple and inexpensive method of arbitration and is approved by the Chartered Trading Standard's Institute. Further information on the Code of Conduct and ABTA's assistance in resolving disputes can be found at [www.abta.com](http://www.abta.com). You can also access the European Commission Online Dispute (ODR) Resolution platform at <http://ec.europa.eu/consumers/odr/>. This ODR platform is a means of notifying us of your complaint; it will not determine how your complaint should be resolved.

#### 14. Conditions of Suppliers

Many of the services which make up your holiday are provided by independent suppliers. Those suppliers provide these services in accordance with their own terms and conditions. Some of these terms and conditions may limit or exclude the supplier's liability to you, usually in accordance with applicable international conventions (see clause 10(4) and 10(6)). Copies of the relevant parts of these terms and conditions and of the international conventions are available on request from ourselves or the supplier concerned.

#### 15. Behaviour

When you book a Holiday with Wendy Wu Tours Limited you accept responsibility for the proper conduct for yourself and your party whilst on Holiday. If we or any other person in authority is of the reasonable opinion that you or any member of your party is behaving in such a way as to cause or be likely to cause danger or upset to any other person or damage to property, we will be entitled to terminate the holiday of the person(s) concerned. The person(s) concerned will be required to leave the accommodation or other service and we will have no further responsibility to them including any return travel arrangements. No refunds will be made and we will not pay any expenses or costs incurred as a result of the termination. You will be responsible for making full payment for any damage or loss caused by you or any member of your party during your time away. Payment must be paid directly at the time to the service supplier concerned. If the actual cost of the loss or damage exceeds the amount paid where estimated, you must pay the difference once known. If the actual cost is less than the amount paid, the difference will be refunded. You will also be responsible for meeting any claims subsequently made against us and all costs incurred by us (including our own and the other party's full legal costs) as a result of your actions.

#### 16. Special Requests

If you have any special requests, including dietary requirements, you must inform us prior to booking. Although we will endeavour to pass any reasonable requests on to the relevant supplier, we regret we

cannot guarantee any request will be met. Failure to meet any special request will not be a breach of contract on our part. Confirmation that a special request has been noted or passed on to the supplier or the inclusion of the special request on your confirmation invoice or any other documentation is not confirmation that the request will be met. Unless and until specifically confirmed, all special requests are subject to availability. Unless you receive written confirmation from the supplier that a special request will be complied with, you must assume that it will not be. The responsibility for providing the special request lies solely with the supplier and not with Wendy Wu Tours. We regret we cannot accept any conditional bookings, i.e. any booking which is specified to be conditional on the fulfilment of a particular request. All such bookings will be treated as "standard" bookings subject to the above provisions on special requests.

#### 17. Fitness, Medical Conditions & Disabilities

Please note that Asia is a vast area with varying terrain (including steps, steep hills and uneven walkways) which can be difficult to negotiate. An indicated 'physical rating' is outlined clearly in this brochure and in the tour specific Tour Dossiers. It is your sole responsibility to ensure that you are sufficiently fit and well to negotiate these areas, without any adverse effect on the overall group or tour operation. You should check that your proposed areas of travel are suitable dependant on your own health, including any medical condition and/or disability that you may have. If you or any member of your party has any medical condition or disability which may affect your holiday or has any special requirements as a result of any medical condition or disability (including any which affect the booking process), please tell us before you confirm your booking so that we can assist you in considering the suitability of the arrangements and/or making the booking. Dietary allergy requests must be made at time of booking and will be passed on to the relevant supplier, but unfortunately we cannot guarantee these requests can be met and cannot be held responsible for any illness or death caused by food consumed as part of your tour package with us. In any event, you must give us full details in writing at the time of booking and whenever any change in the condition or disability occurs. You must also promptly advise us if any medical condition or disability which may affect your holiday develops after your booking has been confirmed. Should this condition not be met, Wendy Wu Tours reserves the right to terminate the holiday of the person(s) involved, as described in section 9.

#### 18. Flights

In accordance with EU Directive (EC) No 2111/2005 Article 9, we are required to bring to your attention the existence of a "Community list" which contains details of air carriers who are subject to an operating ban within the EU. The Community list is available for inspection at [http://ec.europa.eu/transport/air-ban/list\\_en.htm](http://ec.europa.eu/transport/air-ban/list_en.htm). In accordance with EU Regulations we are required to advise you of the actual carrier(s) (or, if the actual carrier(s) is not known, the likely carrier(s) that will operate your flight(s) at the time of booking. Where we are only able to inform you of the likely carrier(s) at the time of booking, we shall inform you of the identity of the actual carrier(s) as soon as we become aware of this. Any change to the operating carrier(s) after your booking has been confirmed will be notified to you as soon as possible. If the carrier with whom you have a confirmed reservation becomes subject to an operating ban as above as a result of which we/ the carrier are unable to offer you a suitable alternative the provisions of clause 9 "If we change or cancel your holiday" will apply. We are not always in a position at the time of booking to confirm the flight timings which will be used in connection with your flight. The flight timings shown in our brochure, on our website and/or detailed on your confirmation invoice are for guidance only and are subject to alteration and confirmation. Flight timings are outside our control. They are set by airlines and are subject to various factors including air traffic control restrictions, weather conditions, potential technical problems and the ability of passengers to check in on time. Specific instructions relating to departure and travel arrangements will be sent with your air or other travel tickets approximately 2 weeks before departure. You must accordingly check your tickets very carefully immediately on receipt to ensure you have the correct flight times. It is possible that flight times may be changed even after tickets have been despatched - we will contact you as soon as possible if this occurs. Any change in the identity of the carrier, flight timings, and/or aircraft type (if advised) will not entitle you to cancel or change to other arrangements without paying our normal charges except where specified in these conditions.

#### 19. Delay and Denied Boarding Regulations

In the event of any flight delay or cancellation at your UK or overseas point of departure, the airline is responsible for providing such assistance as is legally required by the Denied Boarding Regulations (see below). The ferry, tunnel or rail operator is similarly responsible in relation to any delayed or cancelled sea crossing or international

rail departure. Except where otherwise stated in our brochure or on our website, we cannot provide any assistance in such circumstances other than information and advice to the extent we are in a position to do so. Any airline concerned may however provide refreshments etc. We cannot accept liability for any delay which is due to any of the reasons set out in clause 10(2) of these Booking Conditions (which includes the behaviour of any passenger(s) on the flight who, for example, fails to check in or board on time). In addition, we will not be liable for any delay unless it has a significant effect on your holiday arrangements. If your flight is cancelled or delayed, your flight ticket is downgraded or boarding is denied by your airline, depending on the circumstances, the airline may be required to pay you compensation, refund the cost of your flight and/or provide you with accommodation and/ or refreshments under EC Regulation No 261/2004 - the Denied Boarding Regulations 2004. Where applicable, you must pursue the airline for the compensation or other payment due to you. All sums you receive or are entitled to receive from the airline concerned by virtue of these Regulations represent the full amount of your entitlement to compensation or any other payment arising from such cancellation, delay, downgrading or denied boarding. This includes any disappointment, distress, inconvenience or effect on any other arrangements. The fact a delay may entitle you to cancel your flight does not automatically entitle you to cancel any other arrangements even where those arrangements have been made in conjunction with your flight. We have no liability to make any payment to you in relation to the Denied Boarding Regulations or in respect of any flight cancellation or delay, downgrading of any flight ticket or denial of any boarding as the full amount of your entitlement to any compensation or other payment (as dealt with above) is covered by the airline's obligations under the Denied Boarding Regulations. If, for any reason, we make any payment to you or a third party which the airline is responsible for in accordance with the Denied Boarding Regulations, you must, when requested, assign to us the rights you have or had to claim the payment in question from the airline. If your airline does not comply with these rules you may complain to the Civil Aviation Authority on 0333 022 1500 or by completing the relevant online form at [www.caa.co.uk](http://www.caa.co.uk).

#### 20. Data privacy and protection

In order to process your booking and meet your requirements, we need to collect personal data from you and pass your personal details on to the relevant suppliers of your travel arrangements. Depending on what's required, the personal data we collect may include names and contact details, credit/debit card or other payment information and special requirements such as those relating to any disability or medical condition which may affect holiday arrangements and any dietary restrictions which may disclose your religious beliefs ("sensitive personal data"). The person who makes the booking is responsible for ensuring that other members of your party are aware of our booking conditions and this privacy policy and that they consent to your acting on their behalf in your dealings with us.

In making your booking, you consent to personal data being passed on to the relevant suppliers and other third parties. We take appropriate technical and organisational measures which are intended to prevent unauthorised or unlawful processing of personal data and accidental loss or destruction of, or damage to, personal data.

By making a booking with us, you agree to allow your insurers, their agents and medical staff to disclose relevant information to us in circumstances where we may need to act in your interests or in the interests of everyone in any group with whom you are travelling.

In accordance with current legislation and GDPR regulations our privacy policy is available at <https://www.wendywutours.co.uk/help-and-advice/privacy-policy/>. We would also like to hold your information (including any email address), where collected by us, for our own future marketing purposes (for example, to inform you of promotional/ competition offers or to send you our brochure). Wendy Wu Tours Ltd. may wish to contact you by post, e-mail and/or telephone with news, information and offers on its holidays we may have available and for market research purposes. If you prefer not to be contacted for the purposes set out above then please contact the Data Protection Officer at the above web address. You can opt out of all communications at any time.

You are generally entitled to ask us what details of yours are being held or processed, for what purpose and to whom they may be or have been disclosed. Please identify any such enquiry as a Subject Access Request and direct your enquiry to a member of our Customer Services team, who will respond to you within one month. In certain circumstances we are entitled to refuse your request. If you believe that any of your personal data which we are processing is incorrect, please contact us immediately so it may be updated.

# TOP REASONS TO CHOOSE WENDY WU TOURS

## Our expertise

We are passionate about our destinations and know them inside out, so we are on hand to help you choose the very best tours and experiences for your holiday.

## Outstanding guides

Our much-loved National Escorts, whose knowledge and dedication have won us the best reputation in the industry, will make your holiday with us truly extraordinary.

## Fantastic offers

We are renowned for our amazing Business Class and Premium Economy upgrades, which make your holiday all the more special, and we work with leading airlines to offer you regional departures, making your travel as convenient as possible.

## Exceptional value and inclusions

Flights, accommodation, meals, touring, bullet trains, cruises, amazing guides, we include it all!

## Comfort, convenience and enjoyment

We hand-pick comfortable hotels in great locations, have a 'seat and a half' rule for passengers on our coaches, we use separate coaches to take care of your luggage while travelling on bullet trains, and we include all meals on our classic tours, so you can relax and enjoy your wonderful holiday with us, knowing everything is taken care of.

## Visas

All visa costs are included in the price, with expert guidance throughout. We are the only company to launch the world's first China e-visa (applicable at limited entry points with more to launch), taking out the hassle of visiting the visa centre, queuing for finger prints and completing long forms.

## Tipping made easy

We will let you know how much and when to tip and our National Escort will take care of all the tipping on your behalf.

## Regional flavours and evening shows

We offer delicious, authentic meals of the region, giving you a genuine taste of the destination and unforgettable experiences.

## Authentic experiences

No one knows our destinations like we do. On a tour with us you will truly be immersed in the culture, history and tradition of a country as you enjoy meeting local families, learning ancient traditions and taking part in masterclasses and shows, in addition to seeing amazing attractions.

## Our amazing tours and peace of mind

We are very proud to have won our industry's 'Top Specialist Tour Operator of the Year' 8 years running and of our Trip Advisor 5 star rating, Gold Award Feefo Accreditation and recommended by 98% of customers, but we are only satisfied when you come back to travel with us again and again. We are fully ABTA and ATOL protected.

## WE OFFER TOURS AND TAILORMADE TRAVEL THROUGHOUT ASIA & SOUTH AMERICA

- Argentina • Armenia • Azerbaijan • Bhutan • Bolivia • Borneo • Brazil • Cambodia • Chile • China • Colombia • Costa Rica
- Ecuador & Galapagos • Georgia • India • Indonesia • Japan • Kazakhstan • Kyrgyzstan • Laos • Mongolia • Myanmar • Nepal
- Panama • Peru • Russia • South Korea • Sri Lanka • Taiwan • Tajikistan • Thailand • Turkmenistan • Uzbekistan • Vietnam

To book call **0808 239 0551** or see your preferred travel agent.

To see our full range of holidays visit [wendywutours.co.uk](http://wendywutours.co.uk)



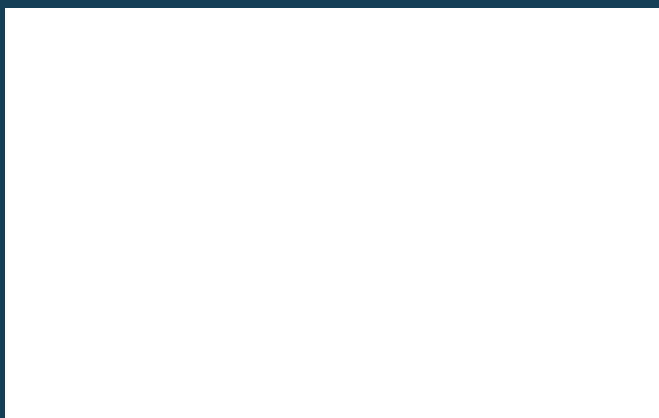
@wendywuofficial



@wendywutours



Search Wendy Wu Tours



Wendy Wu Tours Limited,  
Ground Floor, Cottons Centre,  
Cottons Lane, 47-49 Tooley St,  
London, SE1 2QG

info@wendywutours.co.uk  
wendywutours.co.uk

Opening Hours:  
Mon-Fri 9:00am – 5:30pm  
Sat-Sun 10:00am – 4:00pm



ABTA No W7994

